



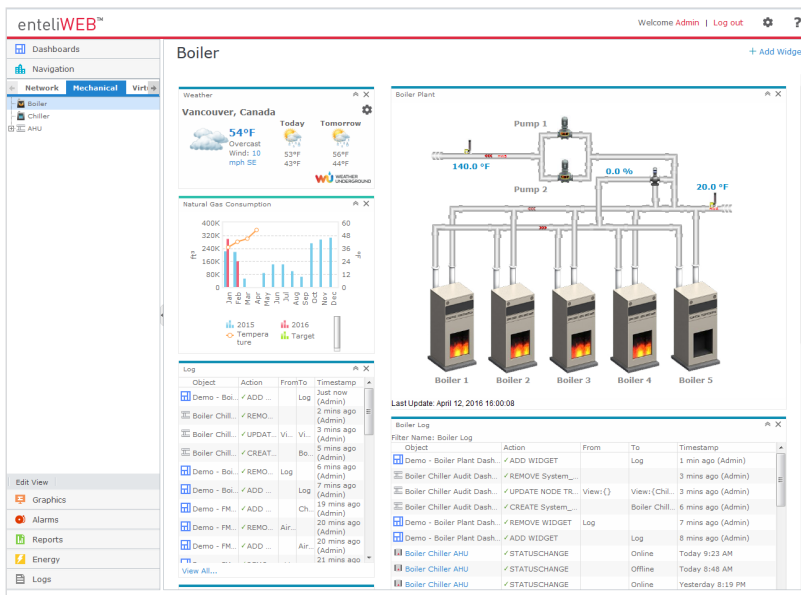
## Software: Enterprise Facility and Energy Management

### Description

enteliWEB is a web-based application that connects all your facilities and centralizes building management operations, site engineering and energy analytics.

View your building your way by creating your own personal dashboards. Whether you are an executive, an energy manager or a building operator, the user experience in enteliWEB can be tailored to meet your exact needs.

- ▶ **Energy Analytics** inside of enteliWEB enables you to turn the existing data and sensors inside your building into virtual meters, and manage energy consumption down to the zone and equipment level. This software-based approach gives you a complete level of knowledge at a fraction of the cost of installing sub-meters.
- ▶ **Engineering Tools** in enteliWEB allow you to create, edit and save objects, modify system graphics and back up databases from a single modern-looking front-end.
- ▶ **Centralize Facility Management** and make it easy to integrate scheduling, alarm management and operations. Connect to all of your buildings under a single login without having to network everything together. Track all building automation system (BAS) changes by service personnel, partner technicians and facility managers in enteliWEB.



### Specifications

#### BACnet Device Profile

Advanced Operator Workstation (B-AWS)

#### Server Operating System

Microsoft® Windows Server® 2019  
Microsoft Windows Server® 2016  
Microsoft Windows Server® 2012  
Microsoft Windows® 10

#### Server Virtualization

VMware® vCenter Server™  
Microsoft Hyper-V®  
Microsoft Azure™  
Amazon® EC2®  
Rackspace® Cloud Server™

#### Client Operating System

Microsoft Windows Server 2019  
Microsoft Windows Server 2016  
Microsoft Windows Server 2012  
Microsoft Windows 10

OS X v10.4 and higher

#### Client Browser

Windows Internet Explorer® 11 and higher  
Firefox® 70 and higher  
Google Chrome™ 78 and higher  
Safari® 13 and higher for Mac  
Microsoft Edge 44 and higher

# enteliWEB®

## enteliWEB Energy

enteliWEB Energy is an enterprise energy management package that makes it easy for anyone to understand the energy usage of their building.

Leveraging the rich dashboard interface of enteliWEB, you have the tools to view your system's energy usage, set target energy goals and compare your energy usage against historical baselines.

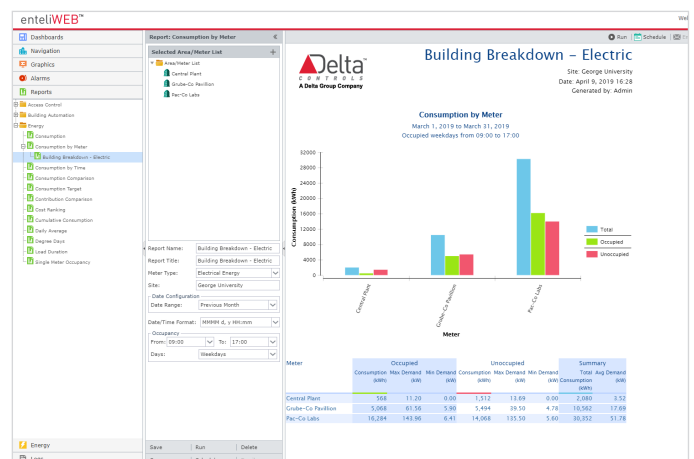
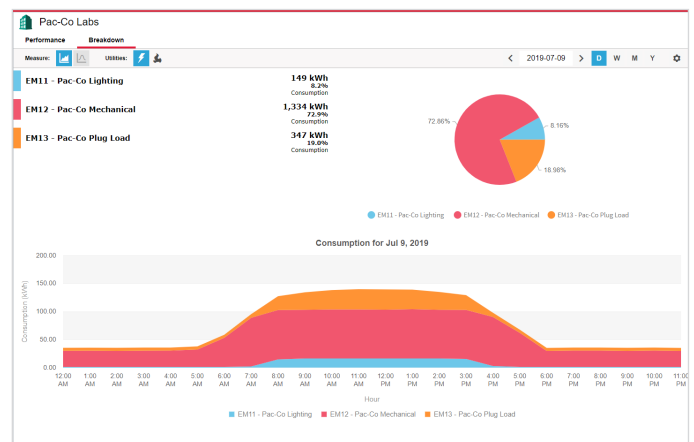
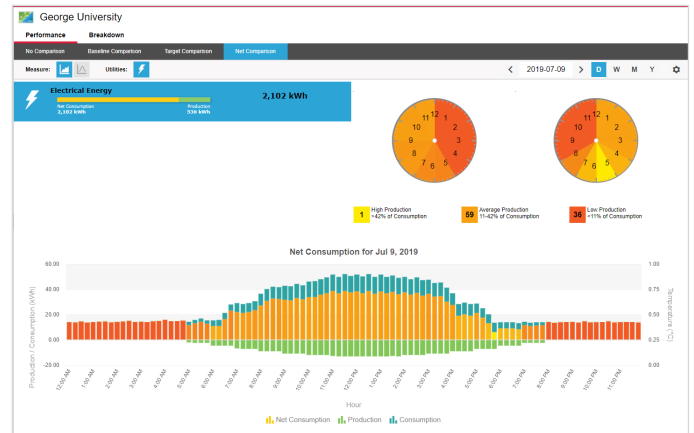
► **Local or Cloud Applications.** enteliWEB Energy is the only energy analytics solution that scales from locally installed dashboards and reports to powerful cloud-based analytics.

► **Virtual Meters.** Find out exactly which building system is consuming too much energy without having to install costly wired meters. Virtual Meters utilize sensors and the data already gathered by the building automation system to track the energy consumption of every piece of equipment in your building, giving you unprecedented visibility into your consumption profile. You can also validate the calculated virtual meters with upstream utility meters.

► **Tracking Energy Production.** If your site generates power from renewable resources, use the interactive calendar in enteliWEB Energy to locate periods of highest and lowest production, and any net gains from production in a comparison chart.

► **Intuitive Dashboards.** These interactive dashboards allow you to analyze and breakdown usage to find energy savings. You can also create energy reports, and send and receive them by email.

► **Alerts and Insights.** Simple alerts to analytics-based Insights warn you in advance of potential consumption overages. Both alerts and Insights are annunciated in enteliWEB and can also be set up for email notification.

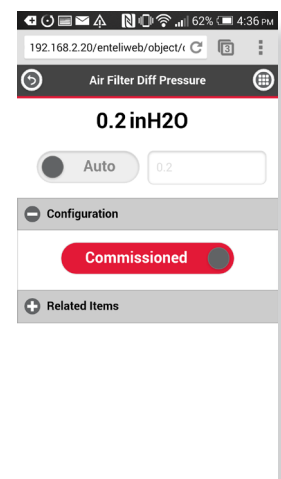
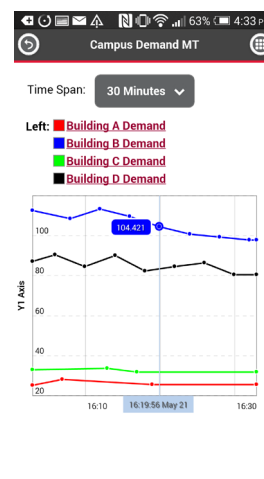
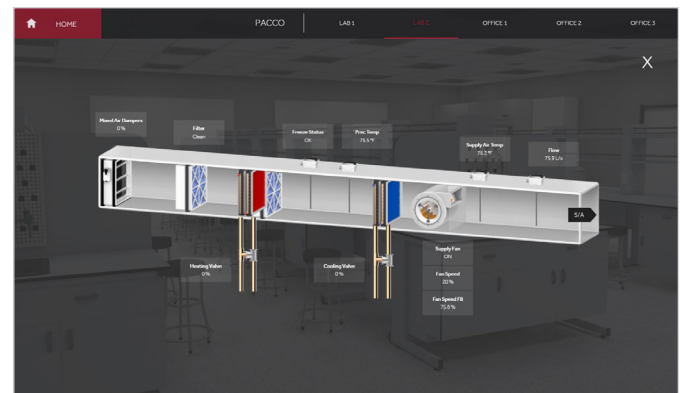
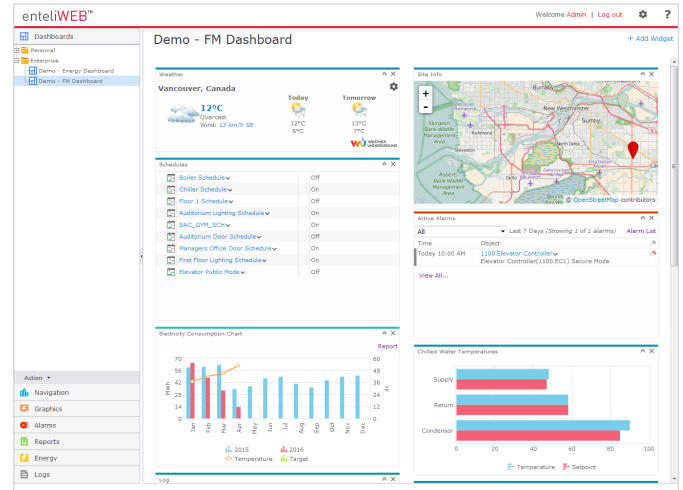


# enteliWEB®

## Visualizing Your Building

enteliWEB makes your data more accessible by presenting information in a visually attractive and user-friendly way.

- ▶ **Enterprise Dashboards.** Provide high level information in simple graphical formats to help manage the facility's key performance indicators (KPIs).
- ▶ **Personal Dashboards.** Personal dashboards are an experience you create yourself. By mixing and matching widgets, each user gets their own personalized dashboard to keep an eye on things that matter.
- ▶ **System Dashboards.** Make operating a facility easy by aggregating system graphics, alarm management, energy information and more into a single dashboard screen.
- ▶ **Navigator.** Automatically scans the BACnet network and presents devices in a logically arranged network tree. BACnet objects can be monitored and commanded directly from Navigator, or opened from Navigator to change the configuration details.
- ▶ **enteliVIZ™ Graphics.** Create HTML5-based intelligent visualizations and equipment graphics in your web browser. Use them in dashboards alongside other widgets, or as full-page standalone graphics.
- ▶ **Mobile Friendly.** Dashboard and object pages are optimized for viewing on your smartphone or tablet. Whether you just want an overview, or you need to override a point, dashboard-driven navigation makes it easy to drill down from high-level views to specific BACnet objects. Finger-friendly buttons and large text mean you don't have to pinch-and-zoom to view content.
- ▶ **Multiple Language Display.** Support your stakeholders in the language that they are most comfortable using. enteliWEB's user-interface can be displayed in one of 22 world languages by selecting the language preference in each user account.
- ▶ **Building Automation Reports.** Gather information about your building by querying controllers on the network and displaying them in professional-looking reports. Reports can be converted to multiple file types, such as .pdf and .xlsx and emailed automatically on a schedule.

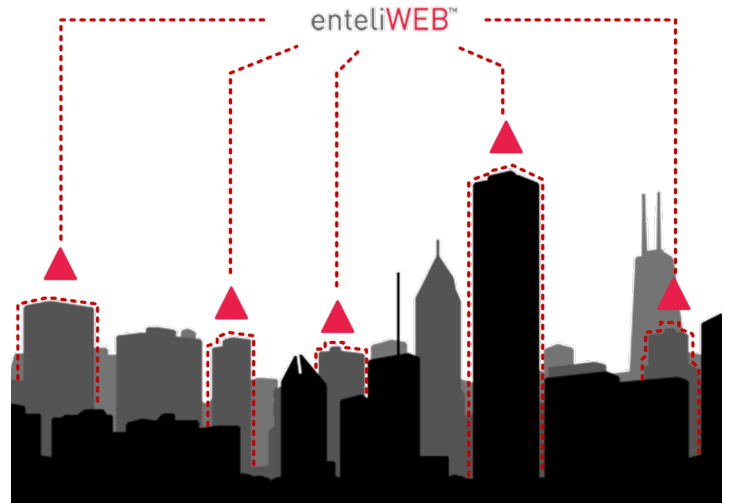


# enteliWEB<sup>®</sup>

## Centralizing Facility Management

enteliWEB provides you the tools to manage multiple sites more effectively.

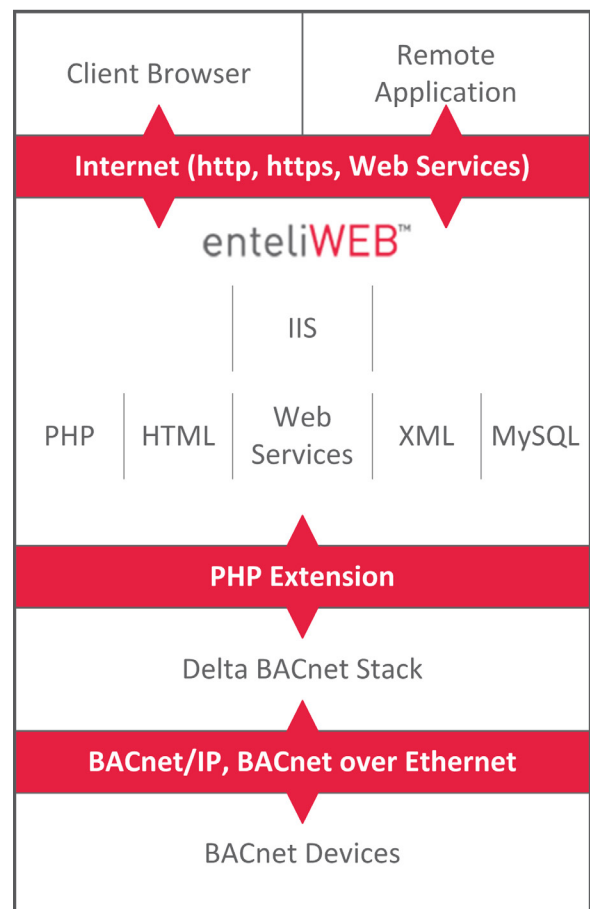
- ▶ **Single Login.** Manage multiple sites using a single login. No need to worry about duplicate addresses or networking everything together. All you need is an IP address for each site.
- ▶ **Retain Supervisory Control** of your entire portfolio of BACnet sites. Leave the other vendor's front end on-site while centralizing your alarm management, scheduling and energy analytics with enteliWEB.
- ▶ **Version Independent Software.** Allows organizations to operate an entire WAN without having to worry about maintaining different firmware versions in the hardware.
- ▶ **Restore and Backup.** Restore your entire BAS to an earlier state or quickly find a specific backup of a device. Schedule daily, weekly or monthly backups across devices on multiple sites.



## Platform for Innovation

enteliWEB's suite of developmental tools allow you to create mobile apps, customize user interfaces and integrate third-party software.

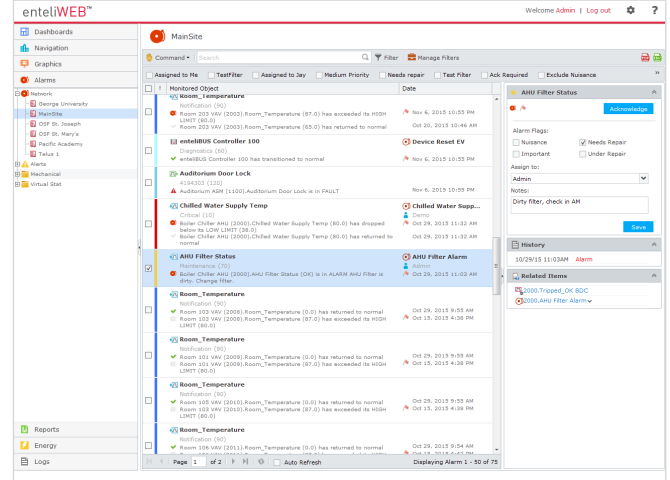
- ▶ **API Documentation Available.** The enteliWEB application programming interface (API) is well-documented, so that you can easily create custom modules, widgets and interfaces to third-party software.
- ▶ **BACnet Web Services.** Allow remote applications, such as mobile apps or business systems to communicate with enteliWEB.
- ▶ **Alarm Module.** The alarm module allows alerts and alarms from non-BACnet systems to be annunciated and managed within enteliWEB.
- ▶ **Open Source Reporting Package.** Design custom reports in enteliWEB using an industry standard open source report package.
- ▶ **ODBC Driver.** Integrate the building automation system with business-level software.



## Alarms

enteliWEB has a robust alarm management system that provides a detailed look at the issues and problems that come up on all your sites.

- ▶ **Comprehensive Alarm Management.** Includes intelligent visualizations, alarm assignments and operator comments on one screen. Powerful filtering, emailing and prioritization make enteliWEB alarm management effective even on your largest sites.
- ▶ **Alarm Widgets.** Can be added to any dashboard for a quick summary of specific data types. The maps widget uses pushpins on a map of your building locations to indicate the number and severity of alarms. The alarm list widget shows the active alarms for specific equipment and the widget can be added to system dashboards.

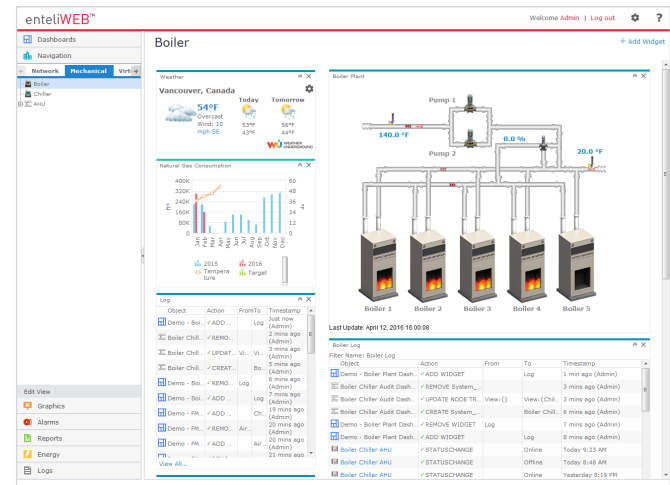


## Electronic Signatures

enteliWEB supports electronic record regulations like FDA Code of Regulations Title 21 Part 11 by enforcing electronic signatures on modifications made in these validated environments. Signatures are recorded in the enteliWEB audit log. For more information, see the enteliWEB FDA 21 CFR Part 11 Compliance white paper.

## User Permissions

- ▶ **User/Group Permissions.** Permissions give you the ability to assign roles and determine which BACnet objects and visualizations a user can see and interact with.
- ▶ **LDAP.** Integrate users from LDAP servers so that IT can control user access to enteliWEB.
- ▶ **Multi-Language Support.** Gives each user the option to select the language they want to use throughout enteliWEB.



# enteliWEB®

## 03 Access Control

enteliWEB provides intuitive user-friendly dashboards to allow you to effectively manage your single site or multi-site enterprise access control.

The built-in access control dashboards leverage enteliWEB's single-seat management interface so that you can easily enroll, provision, assign and manage access rights.

- ▶ **Custom User Fields.** Quickly enter user information that can include conventional data fields and other site-specific information such as title, department, license plate, etc.
- ▶ **Custom Groups to Provision Users.** Whether your facility has a few or hundreds of access points, enteliWEB uses unique access groups that link access rights, access points and access roles to easily provision users.
- ▶ **Real-Time Access to Events and Alarms.** View access events in real-time on the Event Viewer dashboard. Filter the display of events and access alarms by type, level of priority and time range.
- ▶ **Flexible 03 Access Reporting.** Generate reports that answer simple to complex questions about your access system, card users and their activities.
- ▶ **VIVOTEK VAST 2 Integration.** Add VIVOTEK's line of video surveillance cameras and video management software to enhance your 03 Access Control system. When linked, you can view live video feeds directly in enteliWEB.

Event Type #	Event Time #	Door / Device #	Access User #	Site #	Details
Denied Unsuccessful Credential	2020-07-12 15:56:43	IT Room Maintenance ACD	Access Start		<a href="#">Details</a>
Granted	2020-07-12 15:56:43	Amy Ludge Office	889 Brandon Marchi	Access Start	<a href="#">Details</a>
Denied No Access Rights	2020-07-12 15:56:47	IT Room Maintenance ACD	Access Start	100 Jonathan Adams	<a href="#">Details</a>
Denied Credential Expired	2020-07-12 15:56:53	IT Room Maintenance ACD	Access Start	102 Cynthia Zavala	<a href="#">Details</a>
Granted	2020-07-12 15:56:53	IT Room Maintenance ACD	Access Start	100 Cash Rhee	<a href="#">Details</a>
Denied No Access Rights	2020-07-12 15:56:52	IT Room Maintenance ACD	Access Start	100 Jonathan Adams	<a href="#">Details</a>
Granted	2020-07-12 15:56:17	Amy Ludge Office	889 Brandon Marchi	Access Start	<a href="#">Details</a>
Granted	2020-07-12 15:56:10	IT Room Maintenance ACD	Access Start	889 Brandon Marchi	<a href="#">Details</a>
Denied Credential Expired	2020-07-12 15:56:04	IT Room Maintenance ACD	Access Start	102 Cynthia Zavala	<a href="#">Details</a>
Denied Authentication Factor (MFA)	2020-07-12 15:55:56	Amy Ludge Office	Access Start	44 Angela Washington	<a href="#">Details</a>
Denied No Access Rights	2020-07-12 15:55:52	Amy Ludge Office	Access Start	889 Jonathan Adams	<a href="#">Details</a>
Granted	2020-07-12 15:55:50	IT Room Maintenance ACD	Access Start	889 Brandon Marchi	<a href="#">Details</a>
Denied Unsuccessful Credential	2020-07-12 15:55:27	Amy Ludge Office	Access Start	100 Cash Rhee	<a href="#">Details</a>
Granted	2020-07-12 15:55:23	Amy Ludge Office	Access Start		<a href="#">Details</a>
Denied Authentication Factor (MFA)	2020-07-12 15:55:16	Amy Ludge Office	Access Start	44 Angela Washington	<a href="#">Details</a>
Denied Authentication Factor (MFA)	2020-07-12 15:55:09	IT Room Maintenance ACD	Access Start		<a href="#">Details</a>
Denied Authentication Factor (MFA)	2020-07-12 15:55:05	IT Room Maintenance ACD	Access Start	100 Cynthia Zavala	<a href="#">Details</a>
Denied Authentication Factor (MFA)	2020-07-12 15:55:03	Amy Ludge Office	Access Start	44 Angela Washington	<a href="#">Details</a>
Denied Credential Expired	2020-07-12 15:55:02	IT Room Maintenance ACD	Access Start	102 Cynthia Zavala	<a href="#">Details</a>

Name	Value	Door Status	Door Forced Open	Secured Status	Timed Override Expiry
<input checked="" type="checkbox"/> CH Central Plant Door	Pulse Unlock	Closed		Unsecured	
<input checked="" type="checkbox"/> CH Entry Door	Lock	Closed		Secured	
<input type="checkbox"/> PT Entry Door	Lock	Closed		Secured	
<input type="checkbox"/> PT Server Room Door	Lock	Closed		Secured	

## Audit Log

Audit logs provide the ability to track changes made to the system. The powerful filtering and timeline chart make it easy to find the information you're looking for, including manual changes to outputs, alarm history and any other changes made by the system's users.

Event	Module	From	To	Timestamp	Access Control Event Log
map to Manual 2 GA	Event	normal	normal	7/12/2020 15:56:43	Log Type: Access Control
map to Manual 2 GA	Event	normal	normal	7/12/2020 15:56:43	Timestamp: 7/12/2020 15:56:43
map to Manual 2 GA	Event	normal	normal	7/12/2020 15:56:43	Address: 1790-1000-001
map to Manual 2 GA	Event	normal	normal	7/12/2020 15:56:43	Room: Property
map to Manual 2 GA	Event	normal	normal	7/12/2020 15:56:43	Event: Event
map to Manual 2 GA	Event	normal	normal	7/12/2020 15:56:43	Event: Event
map to Manual 2 GA	Event	normal	normal	7/12/2020 15:56:43	Event: Event
map to Manual 2 GA	Event	normal	normal	7/12/2020 15:56:43	Event: Event
map to Manual 2 GA	Event	normal	normal	7/12/2020 15:56:43	Event: Event
map to Manual 2 GA	Event	normal	normal	7/12/2020 15:56:43	Event: Event
map to Manual 2 GA	Event	normal	normal	7/12/2020 15:56:43	Event: Event
map to Manual 2 GA	Event	normal	normal	7/12/2020 15:56:43	Event: Event
map to Manual 2 GA	Event	normal	normal	7/12/2020 15:56:43	Event: Event
map to Manual 2 GA	Event	normal	normal	7/12/2020 15:56:43	Event: Event
map to Manual 2 GA	Event	normal	normal	7/12/2020 15:56:43	Event: Event
map to Manual 2 GA	Event	normal	normal	7/12/2020 15:56:43	Event: Event
map to Manual 2 GA	Event	normal	normal	7/12/2020 15:56:43	Event: Event
map to Manual 2 GA	Event	normal	normal	7/12/2020 15:56:43	Event: Event
map to Manual 2 GA	Event	normal	normal	7/12/2020 15:56:43	Event: Event

## Software: Enterprise Energy Management

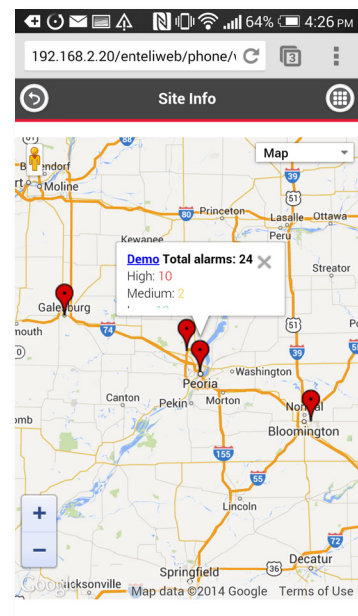
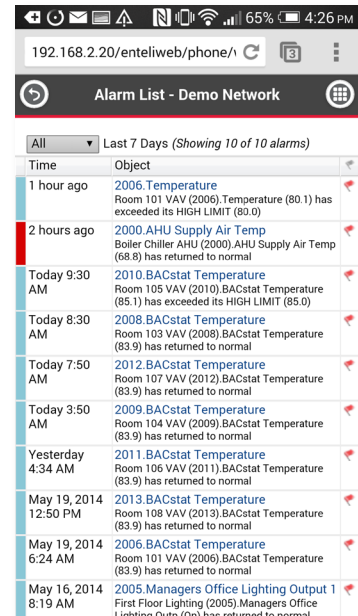
### Ordering

enteliWEB is available in 200, 500, 1000, 2500, and Enterprise editions. All editions and add-ons include 1-year software maintenance subscription.

Edition	Includes	Select One or More Add-Ons
eW200	200 I/O, multiple sites	-EV enteliVIZ graphics -EM Energy management -VM enteliWEB on an offline virtual machine -API Web services, mobile app, interface API and ODBC Driver
eW500	500 I/O, multiple sites	-API
eW1000	1000 I/O, multiple sites	
eW2500	2500 I/O, multiple sites	
eWEnt	5000 I/O (expandable with add-ons), multiple sites	-EV enteliVIZ graphics -EM Energy management -VM enteliWEB on an offline virtual machine -API Web services, mobile app, interface API and ODBC Driver -2500IO 2500 I/O point add-on -25kIO 25000 I/O point add-on -UnLtd Unlimited I/O point add-on

### 03 Access Dashboards

Select add-on	03ACC50	03ACC250	03ACC500	03ACC1000	03ACCUnLtd
	03 Access Dashboards license up to 50 doors	03 Access Dashboards license up to 250 doors	03 Access Dashboards license up to 500 doors	03 Access Dashboards license up to 1000 doors	03 Access Dashboards license with unlimited doors



Microsoft, Windows Server, Windows, Hyper-V, Azure and Internet Explorer are either registered trademarks or trademarks of Microsoft Corporation in the United States and/or other countries. OS X and Safari are trademarks of Apple Inc., registered in the U.S. and other countries. Firefox is a registered trademark of the Mozilla Foundation. Google Chrome is a trademark of Google Inc. BACnet is a registered trademark of the American Society of Heating, Refrigerating and Air-Conditioning Engineers, Inc.  
 Updated September 28 2020

Subject to change without notice.