

# Hornet<sup>®</sup> HP Select

Round Lensed Downlight



HSE-R-LD.T (trimmed)

## Features

The Hornet HP Select round downlight series provides powerful yet comfortable ambient lighting for retail and commercial spaces without compromising budget or design. It delivers over 2,200 lumens in a 75-degree distribution and features Solite lensing for visually pleasing aesthetics. The Hornet HP Select with trim, can easily integrate into new construction projects.

## Product Overview

Type: Recessed Round Lensed Downlight  
 Wattage: 16, 23  
 Color Temp: 3000K, 3500K  
 CRI: 90+ typ.  
 Dimming: 0-10V

## PROJECT:



**EQUIP**

Select Hornet Select Round Downlight fixtures are now part of the Delta Controls Equip program. As a Third-Party Product line, Hornet Select Round Downlight, Adjustable and Wall Washer deliver a broad range of high-performance lighting solutions designed to last and meet desired light levels—supporting your projects with industry-leading performance—and ships in as little as 2 weeks.

Experience the power of Hornet Select Round Downlight Family: exceptional lighting that combines durability and precise light-level performance on target.

## TYPE:

### Performance Chart

Watts	Delivered Lumens	LPW	CBCP	Color Temp
16	1513	94.6	1177	3000K-90
23	1885	82	1467	3000K-90

All wattage and LPW includes 2W thermal protector

### Electrical Data

	16W		23W	
	System Watts	Amps	System Watts	Amps
120V	15.2	0.13	22.8	0.19
277V	15.2	0.06	22.8	0.08

Electronic constant current LED driver

Includes thermal protector, 2W power consumption



# Hornet<sup>®</sup> HP Select

Round Lensed Downlight



PROJECT:

TYPE:

## Housing/Frame Ordering Information

1	2	3	4	5	6
<b>1 Model</b>	<b>2 Style</b>	<b>3 Wattage</b>			
For New Construction HSE-R-NC (New Construction)	T trimmed	16 23			
<b>4 Voltage</b>	<b>5 Driver</b>	<b>6 Options/Accessories</b>			
120 277	0-10V 0-10V dimming, 1% dim	EM emergency battery pack with remote test switch (not available for use with CP or IC options)			

## Trim Ordering Information

HSE-R-LD		75SOL		
1	2	3	4	5
<b>1 Model</b>	<b>2 Style</b>	<b>3 Finish</b>		
HSE-R-LD lensed downlight	T trimmed	Trimmed MWW matte white, white flange		
<b>4 Beam Spread</b>	<b>5 Color Temp-CRI</b>			
75SOL 75° beam with solite lens	90+ CRI 309 3000K-90+ 359 3500K-90+			

# Hornet® HP Select

Round Lensed Downlight



## PROJECT:

## TYPE:

### Specifications

#### Application

Retail and commercial ambient lighting

#### Finish

Powder coat paint/wet paint

#### Construction

20 ga. galvanized steel frame  
18 ga. galvanized steel splice housing and hanger brackets (not for Remodeler version)  
Cast aluminum plaster frame with perforated face (for trimless version only)  
Die-cast optical housing and trim  
Die-cast heat sink

#### Mounting

26" Hanger bars included (except for Remodeler versions)

#### Trimmed Fixture:

For use in grid or sheetrock ceilings, 5/8" - 2" max standard

#### Certifications

CSA damp as tested to UL 1598 standards  
Damp location

#### Optical

Beam Spread-Lens: 75SOL - 75° beam with solite lens

#### Warranty

5 year limited warranty

#### LED

Color Temp Options: 3000K, 3500K  
CRI: 90+ typ.  
R9 Values: 55 (92 CRI)  
Binning: 3 MacAdam (SDCM)  
Life: 50,000+ hrs, > 70% of initial lumens at 50,000 hrs

#### Emergency Battery Pack (EM)

Powers fixture at 5.1 watts (approx. 400 Lm) for 90 minutes

#### Electrical

Wattage: 16, 23  
Electronic constant current LED driver, 120/277VAC input  
**This product complies with IEEE C62.41 for surge endurance up to 2.5KV. Amerlux® recommends using additional surge protection with this unit (supplied by others), surge and over voltage damage is not covered under warranty.**  
*Note: Drivers are universal but thermal protector is voltage specific*

# Hornet<sup>®</sup> HP Select

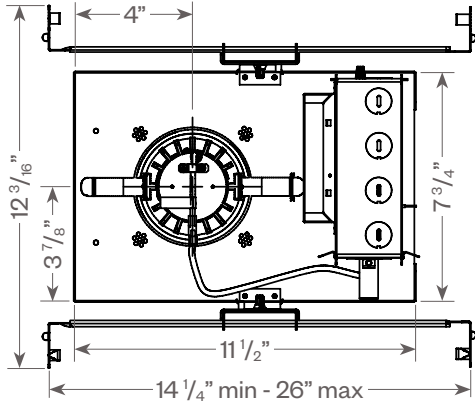
Round Lensed Downlight



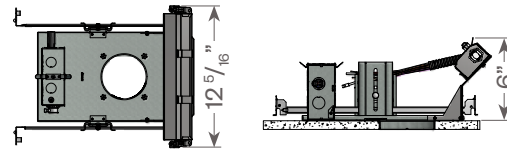
PROJECT:

TYPE:

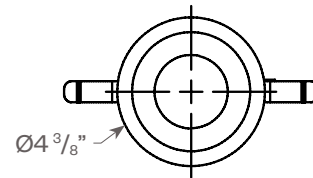
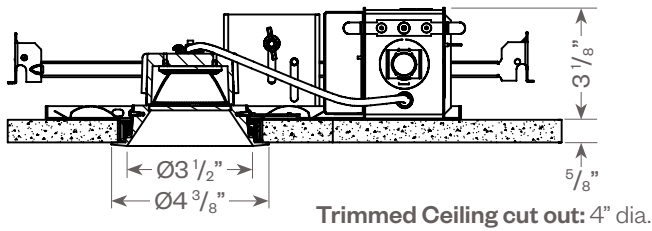
## Product Details



### Emergency Battery Pack (EM) option



### Trimmed



# Hornet® HP Select

Round Lensed Downlight



**PROJECT:**

**TYPE:**

## Fixture Data (complete photometric data (.ies format available upon request))

**MULTIPLYING FACTORS:**

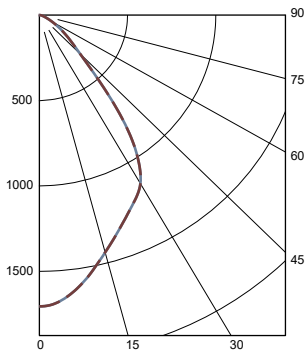
<b>Wattage:</b>	<b>16W</b>	<b>23W</b>
Factor:	0.69	1.0

**NOTE:** Fixture was tested with 3000K-83 LED chip, use factors below to reflect 3000K-90+ or 3500K-90+

<b>CCT:</b>	<b>3000K-90+</b>	<b>3500K-90+</b>
Factor:	0.86	0.90

### 23W LED, 3000K-83

75° Solite Lens  
LTL # 14845017.02  
Lumens: 2192 lm; 100.2 lm/W

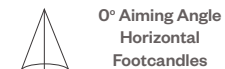


**Candelas at Nadir**

Deg	Candela
0	1706
5	1664
15	1437
25	1234
35	933
45	335

## Application Data

75° Solite Lens



0° Aiming Angle Horizontal Footcandles			
D	FC	L	W
5.0'	64	5.4	5.4
7.5'	30	7.9	7.9
10.0'	17	10.6	10.6
12.5'	11	13.6	13.6

**Notes and Definitions:**

Beam spread is to 50% center beam candlepower (CBCP).

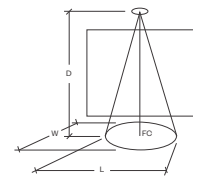
**D**=Distance to floor or wall.

**FC**=Footcandles on floor or wall at center beam aiming location.

**L**=Effective Visual Beam length in feet (50% of maximum footcandle level).

**W**=Effective Visual Beam width in feet (50% of maximum footcandle level).

**CB**=Distance across or down to center beam location.



# Hornet<sup>®</sup> HP Select

Round Lensed Downlight



**PROJECT:**

**TYPE:**

## Dimming Compatibility

Amerlux<sup>®</sup> Hornet fixtures are compatible with all major dimming protocols prevalent in the United States. Please see below for general compatibilities and wiring diagrams. Amerlux recommends testing your unique dimming configuration as the exact full configuration (Dimmer, Fixture Quantity, Voltage, etc) may affect dimming performance.

**--- NOTE: INFORMATION BELOW IS FOR WIRED DIMMERS ONLY. FOR WIRELESS DIMMERS, CONSULT FACTORY ---**

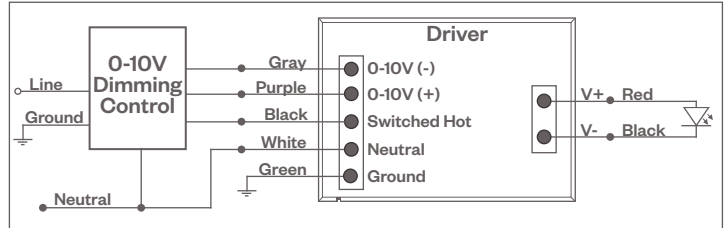
### 0-10V DIMMING

Integrates into a variety of building management and daylighting controls

**Notes:**

- 120VAC or 277VAC\*
- Dims down to 1% light output
- Requires interface to turn off power to driver
- Consult Dimming manufacturer for installation instructions - DO NOT SHARE NEUTRALS!

0-10V Wiring Diagram



**Compatible Dimmers\*:**

**Wall Box**

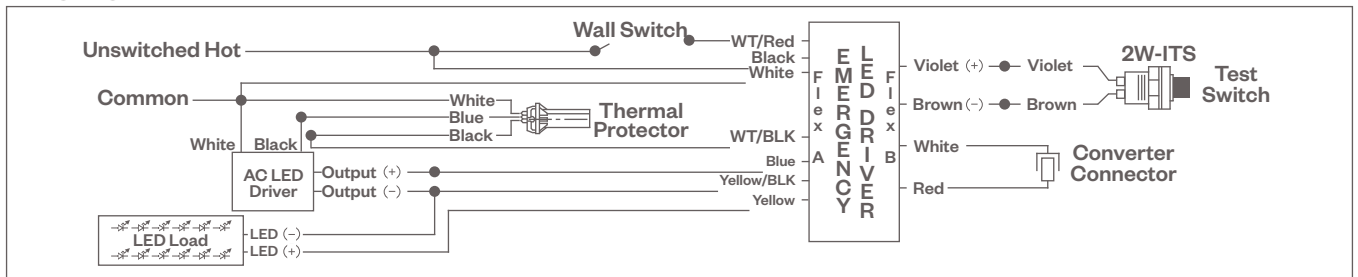
Lutron "Diva" - DVSTV | Leviton Renoir II 0-10V

**Central System**

Lutron Grafik Eye with GRX-TVI Interface

## Emergency Battery Pack

Wiring Diagram



**Notes:**

- \* Driver is 277VAC dimmable with appropriate dimmer (by others). All provided wiring diagrams show 120VAC wiring colors and method. Please refer to 277VAC dimmer manufacturer installation instructions for 277VAC wiring diagrams.
- † The absence of a dimmer from the lists above does not imply incompatibility. Please consult factory for compatibility inquiries.

