



Make Sensing Matter 

INTELLECTUALIZED TRANSFORMATION IN COMMERCIAL BUILDINGS

Enhances Smart Building Energy Efficiency

MILESIGHT

CONTENTS



01

Introduction

- Global Industry Trends
- Milesight's Leadership
- Solution Focuses & Strategy

02

Market Solutions

- Smart HVAC Control and Management
- Smart Lighting Control and Management
- Smart Energy Consumption Measurement

03

Milesight Connectivity

- LoRaWAN® Gateways for Various Solutions
- Industrial Cellular Router for BIPV Connection
- Software & Platforms

01

INTRODUCTION

- Global Industry Trends & Drivers
- Milesight's Leadership
- Solutions' Focuses & Strategy

GLOBAL INDUSTRY TRENDS AND KEY DRIVERS

Enhance energy efficiency in commercial buildings worldwide to foster a sustainable and green future



IoT



AI



ToF



Hospitality



Building owners



Consumers & users



Office Building



D2D



Regulatory Compliance

Compliance with legislative requirements and energy consumption reduction standards is crucial for buildings to meet regulatory demands.



Financial Incentives

Energy efficiency reduces costs, improves LEED scores, and other certifications, often accompanied by financial incentives from local governments.



Social Demand

Growing public demand for energy-efficient buildings, driven by environmental consciousness and the desire for sustainability.

ABOUT MILESIGHT

Milesight offers multi-potential sensing products to capture the most meaningful data and makes it accessible across diverse applications. It innovatively applies emerging technologies such as AI, 5G, and IoT to distinct use scenarios. With a commitment to making sensing matter, Milesight quickly responds to customer-specific challenges and collaborates with an expanding network of partners to deliver unique data value. It is determined to make real, positive impacts in smart buildings, intelligent traffic, intelligent security, smart cities, and beyond.



AIoT

Digital Sensing
Products Provider



600+

Employees



2000+

Distributors and
System Integrator Partners



120+

Serves to 120+
Countries and Regions



60M+

Annual Turnover of
60+ Million USD



2

2 Product Lines: Video
Surveillance and IoT



MILESIGHT ENERGY EFFICIENCY SOLUTION'S FOCUSES

Smart & Energy-efficiency-oriented Building

Smart Building Controls



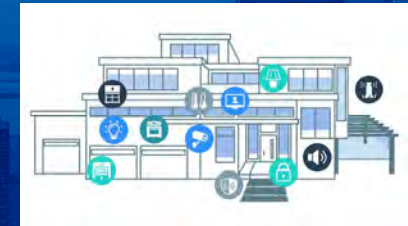
- Remote Monitoring
- Electrical Appliances
- Smart On/Off Controls

Energy Monitoring & Analysis



- Data Collection
- Decision-making
- Allocation Adjustment

System-wide Integrated Controls



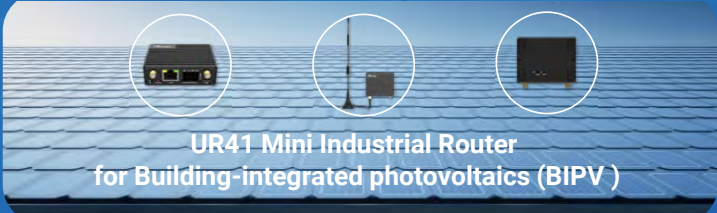
- Wireless Sensors Integration
- BACnet/IP BMS Integration
- DALI Lighting Integration
- Solar / BIPV Integration



Milesight focuses on deepening its expertise in the vertical field of smart buildings. It explores more possibilities in the **Energy Efficiency** and **BMS/EMS** domain, paying attention to diversified technologies while delving into key areas. Milesight is committed to becoming a leading provider of **digital sensing products** in the industry.

MILESIGHT ENERGY EFFICIENCY SOLUTIONS PRODUCTS STRATEGY

Milesight



HVAC Control & Management



Smart Thermostat

Lighting Control



Smart Light Controller



Smart Scene Panel



Smart Wall Switch

Energy Consumption Measurement



Smart Socket



Smart Current Transformer



02

ENERGY EFFICIENCY SOLUTIONS

- Smart HVAC Control and Management
- Smart Lighting Control and Management
- Smart Energy Consumption Measurement

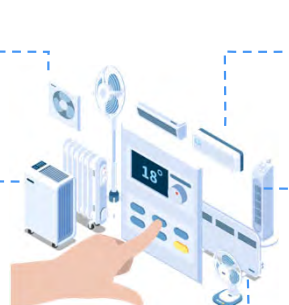
MILESIGHT ENERGY EFFICIENCY SOLUTIONS

HVAC Control & Management

Radiator Management

Air Conditioner

Heat Pumps



Boilers

PTAC Integration

Fan Coil Unit



Lighting Control & Management

Energy Consumption Measurement



Related Product Series

AM Series



WT Series



Occupancy & People Counting



CHALLENGES IN HVAC ENERGY EFFICIENCY

Nearly 60% of commercial buildings face inefficiencies with HVAC systems in terms of energy consumption



Chaotic HVAC Management in Buildings

- Unable to **control the heating & cooling system properly**
- Fail to avoid **unexpected energy consumption & unnecessary energy waste**
- **Constantly turning the system on and off**

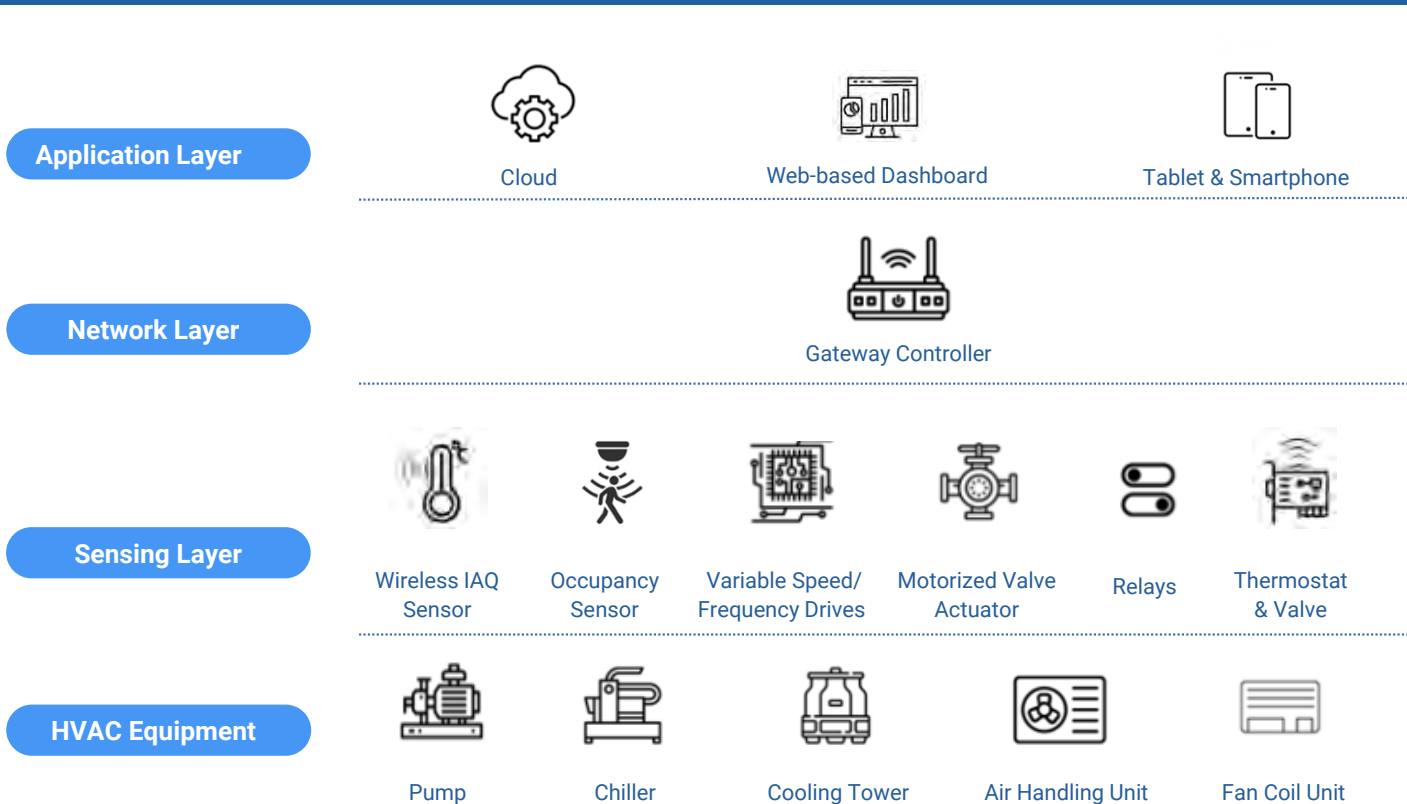


Expensive System Upgrading & Retrofitting

- The **higher upfront cost** of Energy-efficient HVAC systems
- Historic commercial buildings with **construction and space limitations**;

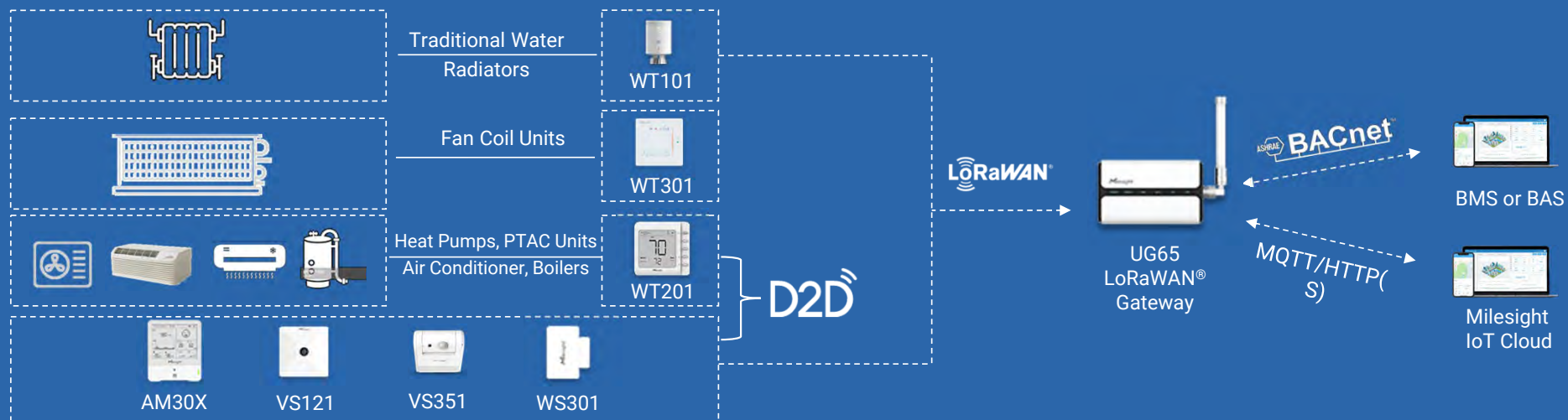
HOW DOES IOT WORK IN AN HVAC SYSTEM?

Using IoT for HVAC involves the integration of IoT sensors and devices for **data collection, transmission, processing, and subsequent system optimization** based on the gathered insights.



- Sensors collect **ambient data** and send it wirelessly to the cloud;
- Cloud presents data on a **web-based dashboard/mobile app**;
- Thermostats control **valves or fan speeds** based on cloud instructions;
- **AI analytics** offer insights and alerts for abnormal behavior.
- **Connected thermostats** can autonomously take corrective actions.

MILESIGHT HVAC ENERGY EFFICIENCY SOLUTION



Smart Thermostats Replacement

- Compatibility with various HVAC systems
- Temperature regulation within spaces

BACnet2IP Gateway Integration (Thermostat-GW-BMS)

- Standardized protocol for building automation and control systems
- Bi-directional communication for smart HVAC integration

Node-Red Connection (Thermostat-Gateway -Sensor)

- Easy connection between thermostats and sensors through gateway
- Easy-to-use programming environment and scalability

Milesight D2D Communication (Thermostat- Sensor)

- Reliable and low-latency communication between sensors and WT201
- System governance based on data from sensors and human preferences

SMART THERMOSTATS SOLUTION

The efficient management of HVAC systems in energy-saving-oriented buildings is of utmost importance due to the significant impact it has on **reducing high-cost energy usage**. Recognizing this challenge, Milesight has developed a range of innovative products and solutions specifically designed to monitor and control HVAC systems, **enabling higher efficiency and better productivity for buildings**.



➤ Milesight HVAC Management

- Radiator Management
- AC, heat pumps, boilers, and PTAC Management

➤ Benefits

- **Monitor** the status **remotely**
- **Control** systems **automatically**
- **Customizable** settings & scheduling

WT101 SMART RADIATOR THERMOSTAT

WT101 is a LoRaWAN®-based radiator valve with visualized LED and smart moderation and communicative triggers to optimize the heating regulation and save both energy and cost.



M30 x 1.5mm Valve

Optional Valve Adapter Kit:



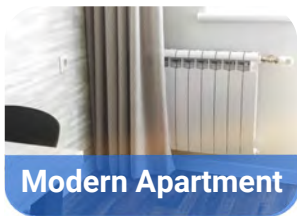
34mm RAV

22.6mm GIA

23mm RA

26mm RAVL

28mm CTH



Modern Apartment



Nursing Home



Large Buildings

Radiator Management

Smart & Communicative

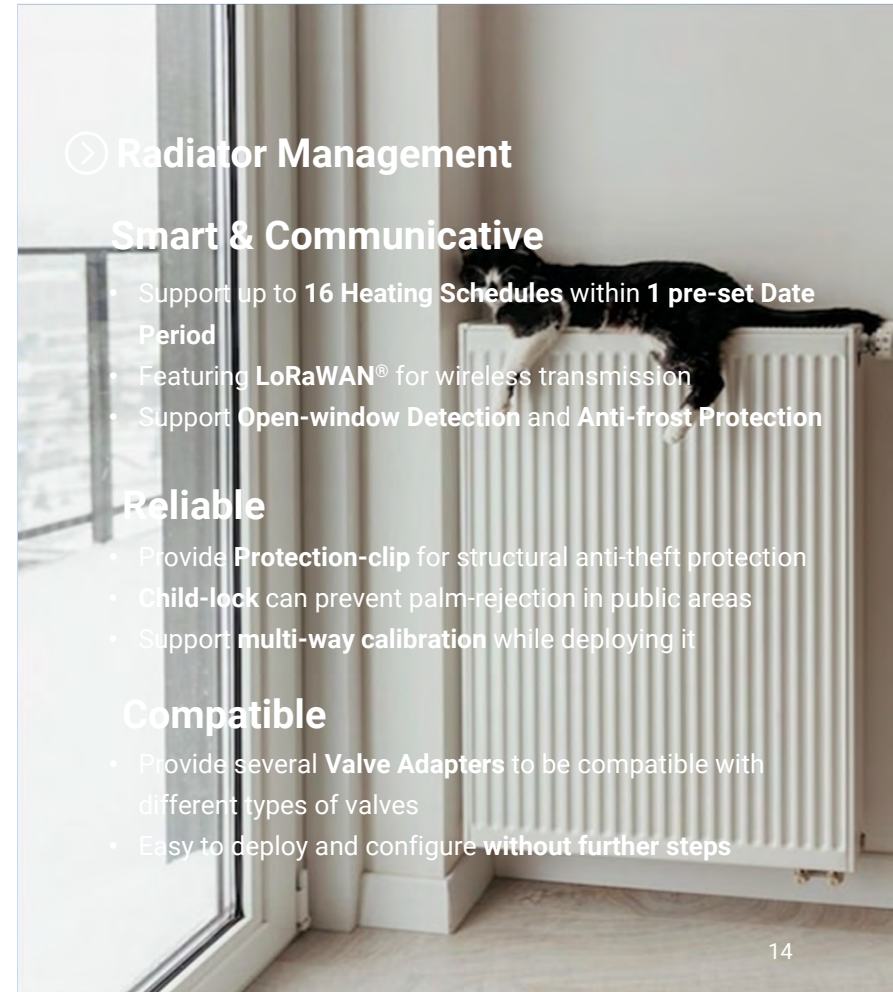
- Support up to 16 Heating Schedules within 1 pre-set Date Period
- Featuring LoRaWAN® for wireless transmission
- Support Open-window Detection and Anti-frost Protection

Reliable

- Provide Protection-clip for structural anti-theft protection
- Child-lock can prevent palm-rejection in public areas
- Support multi-way calibration while deploying it

Compatible

- Provide several Valve Adapters to be compatible with different types of valves
- Easy to deploy and configure without further steps



WT201 SMART THERMOSTAT D2D[®]

Milesight

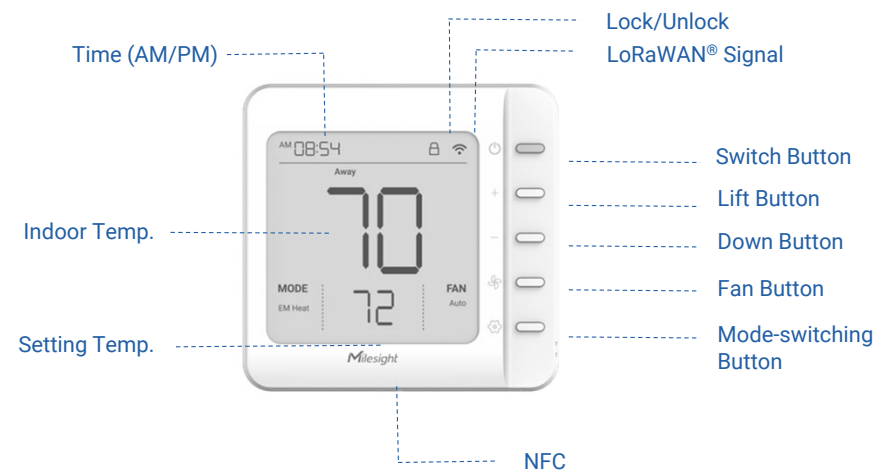
WT201 is a LoRaWAN[®]-based thermostat providing a larger coverage and a cost-effective solution. WT201 is able to manage the HVAC system including air conditioners, heat pumps, boilers, and PTAC devices for building a more comfortable environment with a minimum effect to human's life.

> Save Indoor

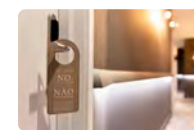
- **Intuitive Interface:** User-friendly **3-inch Screen**
- **Energy Usage Insights:** **Home Automation** and simple **HVAC management**
- Support for **four classic modes: Heat, Cool, Emergency Heat, and Auto**
- **Compatible** with various heating and cooling systems, support up to **4 Heat/ 2 Cool** Heat pump systems
- **Switchable fan modes** with options for **Auto/Fan-on/Circulate**
- Switch between **Fahrenheit and Celsius**
- Integration with **Milesight D2D** for creating smart **If-then triggers** and automation

> Manage Away

- Support **Time Table** for scheduled and switchable **Wake/Away/Home/Sleep** Modes
- Equip with **Automatic Mode** for adjusting the temperature automatically
- Highly reliable with structural **Anti-theft** function and **remote management**
- Support **Button Lock locally** and allows for **remote management**



Commercial Building



Hotel



Office Building



Hospital

2025Q2

Milesight

WT303/WT304 Smart Fan Coil Thermostat

Smart Fan Coil Thermostat is designed to oversee fan and valve operations in AC applications. WT series is ready to release the new version of FCU Thermostat with wide current voltage choices while being compatible with two-pipe and four-pipe fan coil units covering on/off relay and 0-10v valve control series, performs well controlling three-speed fans as well. Function well with standard LoRaWAN® gateway, WT30x series can work smoothly with your existing LoRaWAN® network.

① User-friendly Operation Panel

- **2.7-inch E-ink Screen** to Achieve Convenient and Aesthetic Criteria
- Brief Operational Panel Design and Wireless Device Decrease Complicated Work
- Default **3 schedules** and allows setting **up to 8 schedules with 16 times respectively**
- Support **D2D Communication** for connecting with other Sensors easily

② High Adaptability to Scenarios

- Four-pipe on/off Relay/ Four-pipe 0-10v valve
- Additional Interfaces like **Keycard Interface** Allows it to Adapt to Professional Scenarios like Hotels
- **Additional NTC Interface** Satisfies the Central Management Scenarios
- Easy to install with the compact size

③ Security upgrades

- Support **Key Lock Function** to Prevent Accidental Touch.
- **Anti-freezing Protection** Ensures Stable Operation in Low Temperatures.
- Support **Open Window Detection** to Reduce Resource Waste
- Support **System Control** When Abnormal Pipe Mode and Abnormal Humidity Detected
- Support **Threshold Alarming** and **Fan Delay-off Mode** for System Maintenance



WT30x



Wire Bottom Case

2025.Q4

WT401 Wireless Smart Thermostat & UC711 HVAC Controller

Milesight

LoRaWAN®

① User-friendly Operation Panel

- 2.7-inch E-ink Screen to Achieve Convenient and Aesthetic Criteria
- Wireless Battery-powered Device with **Up to 5-year Battery Life** Decrease Complicated Work
- Wall-mounted **anti-theft** function protects equipment safety.
- Support **child lock** function to prevent accidental touch.

② High Compatibility & Flexible Connectivity

- Support **NFC or BLE Configuration** While Supporting **BLE & PowerBus for Communicating** with Controlling Module
- Support Matching with Different HVAC Controlling Module Covering Different HVAC Systems
- Support Multiple Power Sources: **Battery, Powerbus, or Type-C Interface**
- Highly Adapted to Various Indoor Environment like Building Offices, Hotels, and Stores

① Professional HVAC Controlling Module

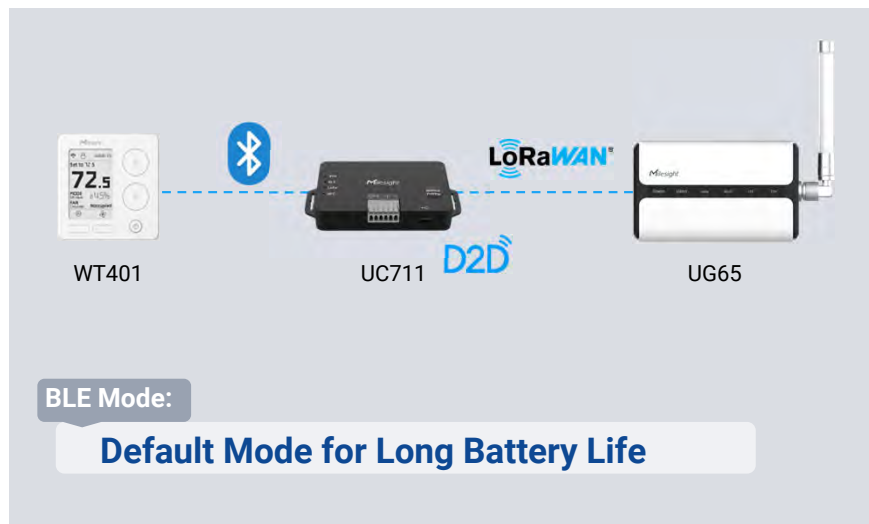
- Supports up to **4 Heat/2 Cool, & Cool, Heat, Auto, & 5 Fan Modes** Including Auto/High/Medium/Low/Circulate
- Specialized HVAC System Management Module for More Professional Applications
- Work Smoothly Paring with WT401 Wireless Thermostat via BLE or PowerBus

② Scenario-based Design Adapting to Versatile Environment

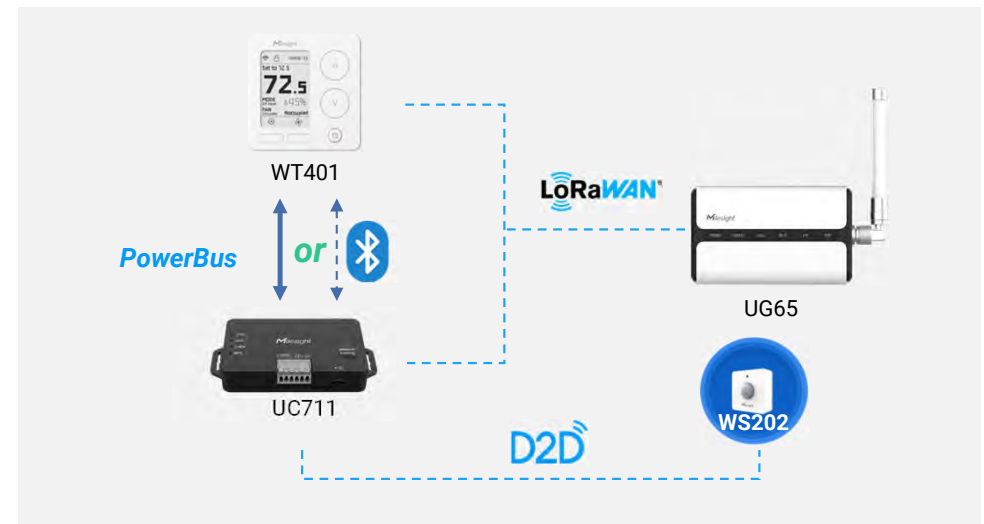
- Schedules can Work as you Set Even During Disconnection for **up to 72h**
- Support LoRaWAN® Transmission for Data Reporting and Downlink Configuration as Well
- Support **24VAC** Power Supply



WT401 Wireless Smart Thermostat & UC711 HVAC Controller



WT401 can send command and transfer data via Bluetooth for short-distance and low-consumption connection. UG65 can control and do downlink configuration to UC711 via LoRaWAN® transmission, the PTAC controlling module. In this way, WT401 can meet the long battery life purpose with less consumption and achieve quick communication.



Since WT401 & UC711 both support LoRaWAN® transmission, they can be integrated into any standard LoRaWAN® network while doing interactive settings.

PowerBus connection supports both powering and communication to the internet.

- ① **PowerBus + LoRa:** Wired & Stable Choice
- ② **BLE + LoRa:** Wireless Choice

MILESIGHT HVAC ENERGY EFFICIENCY SOLUTION



Milesight HVAC control solution saves resources and reduces utility costs since it automates heating, ventilation, and air conditioning tasks.

Remote Monitoring & Control

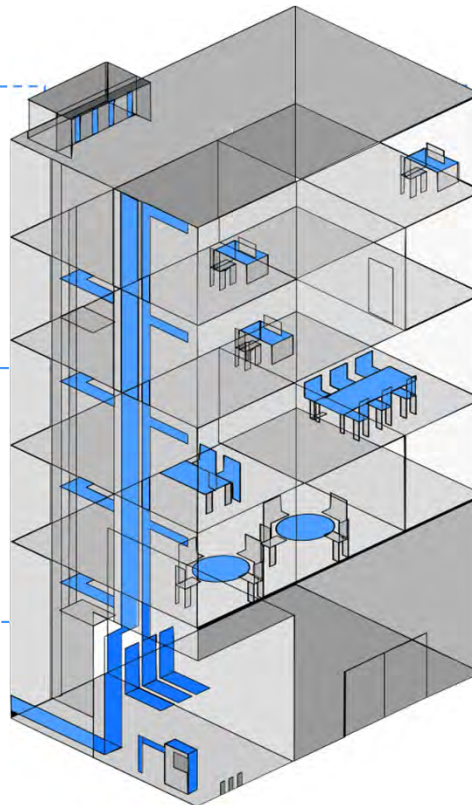
- Granular data from sensors
- Variables measurement like temperature, humidity, on/off cycles, and fault tolerance
- Accurate system health assessment

Energy Efficiency Optimization

- IoT sensors on outdated HVAC systems
- Real-time data monitoring
- Increased energy efficiency
- Decreased energy consumption

Plans for Ongoing Maintenance

- Energy-saving tips and suggestions
- Remote control capabilities for HVAC systems
- Maintenance agreements for long-term profitability



Conformity with Regulations

- Real-time data capture
- Automatic report generation
- Reduction in inspections & paperwork

Data Gathering and Analytics

- User behavior analysis
- Energy usage trend monitoring
- System performance evaluation
- Identification of system inefficiencies through data analysis

Better Return on Investment

- Predictive maintenance improves HVAC component condition.
- Longer lifetime value of HVAC system
- Increased return on HVAC investment

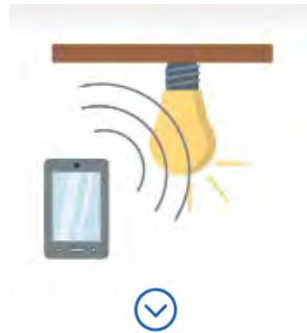
MILESIGHT ENERGY EFFICIENCY SOLUTIONS

Lighting Control & Management

Individual Light

Group of Lights

LoRa & DALI



Daylight Harvesting

Presence Sensing

Local & Remote Control



Related Product Series

CoWork Series



Smart Scene Panel



Smart Wall Switch



Smart Light Controller



Brightness Controller (DALI)



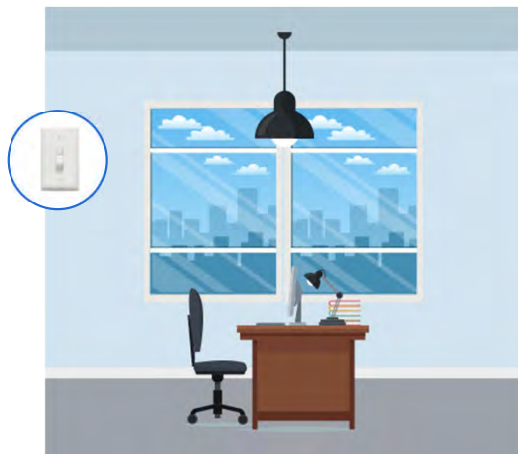
Occupancy & People Counting

Energy Consumption Measurement

HVAC Control & Management

CHALLENGES IN LIGHTING CONTROL SYSTEM

Need for interoperability in IoT lighting in buildings



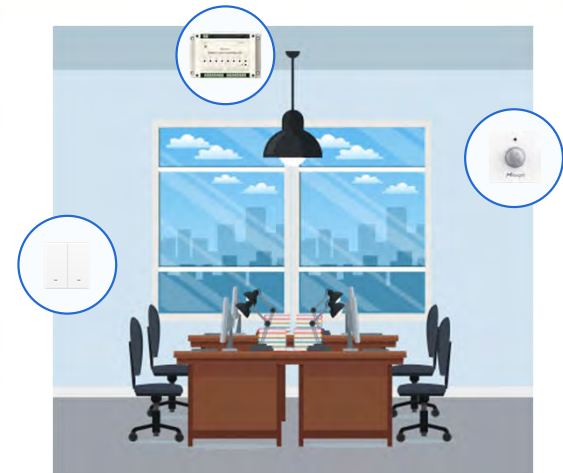
Past

The significance of LEDs and Bluetooth communication in building plans may not have been understood or considered by lighting designers 20 years ago.



Present

LEDs and wireless communication systems are universal in practically every modern structure.



Future

The Milesight lighting control solution provides building owners and facility managers with interoperability to achieve energy savings.

HOW DOES IOT WORK IN A LIGHTING SYSTEM?

The sensors are typically installed in each light fitting, resulting in an average measured **lighting energy saving** of approximately 90% with the installation of **LEDs and IoT**.



Tips

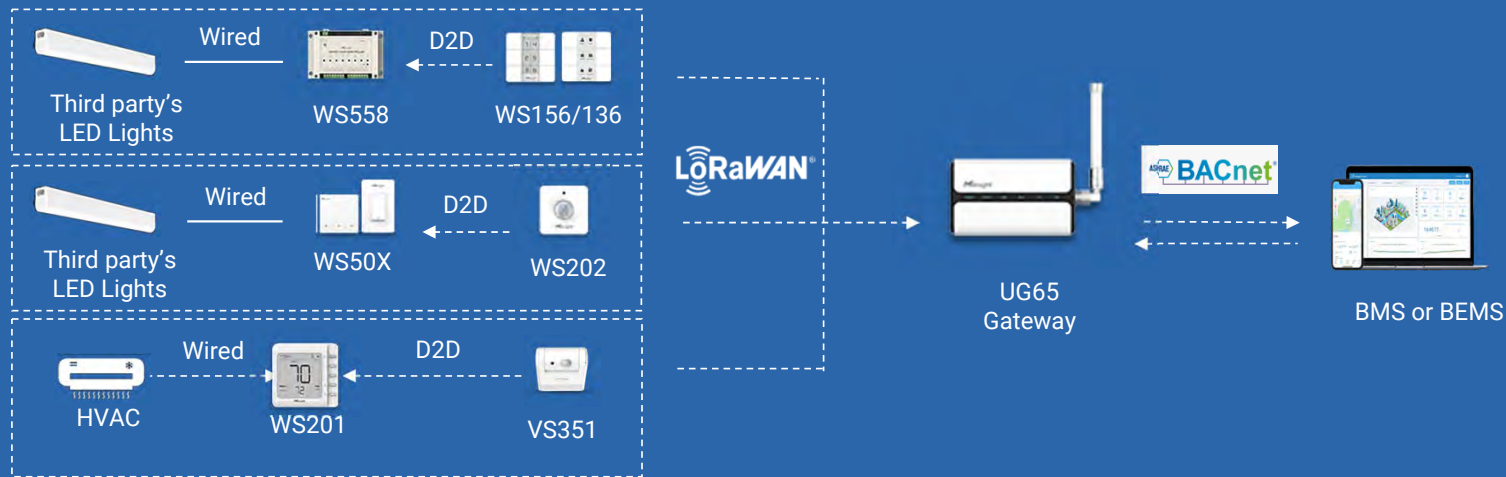
- Transitioning to high-efficiency **LED lights**;
- Implementing advanced **lighting control techniques**.
- Installing IoT based **occupancy and daylight sensors**;
- Enabling greater **interoperability**;



MILESIGHT LIGHTING CONTROL SOLUTION



Equipping interoperability to meet various energy objectives



➤ Device-to-Device Interoperability

- Compatibility between different vendors
- Integration of sensors for controlling lighting and HVAC operations
- Upgrading lighting in air-conditioned and refrigerated spaces for energy-saving

➤ Device-to-System Interoperability

- **BACnet/IP protocol** on the LoRaWAN® gateways UG6X
- **Seamless integration** of the connected lighting system with BACnet-compatible Building Automation Systems.

➤ DALI-Dimmer Brightness (H2 Coming)

- Turning the lights **On and Off**
- Precise control over the **brightness** of individual or group of lights



➤ Single Space / Room-based System

- Direct communication using the LoRaWAN® protocol is employed by sensors, panels, and lighting controllers.



➤ Suite/ Floor/ Building-based System

- Gateways employ the LoRaWAN protocol to connect and grant internet access permissions to various room systems.

WS558 SMART LIGHT CONTROLLER D2D

Provide a Cost-effective Solution in Managing and Controlling Lighting System

Lighting Control & Management

Smart Light Controller



WS558 (LN Version)

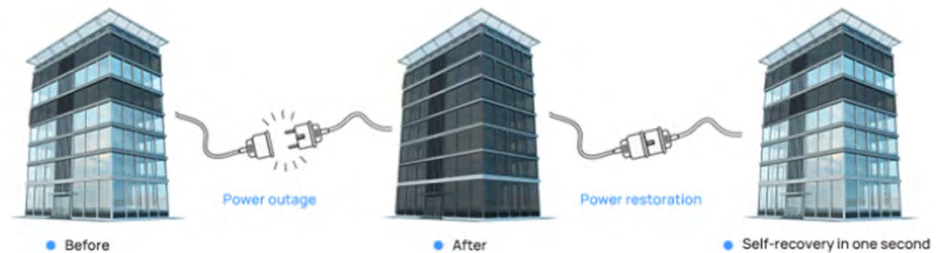


WS558 (Switch Version)

- LN type or Switch type optional, capable of controlling **up to 8** circuits of lights
- Supports **local switch button control**, able to test the lamp status without networking
- Collects data of **current, voltage, power, electrical consumption** for smart management
- Compliant with standard LoRaWAN® gateways & **Milesight IoT Cloud**
- Supports **Milesight D2D** protocol & **multicast** for control in bulk



Power-Off Memory Function



WS156/136 SMART SCENE PANEL

D2D³

Milesight

One-to-Many Control



WS156

E-ink Screen



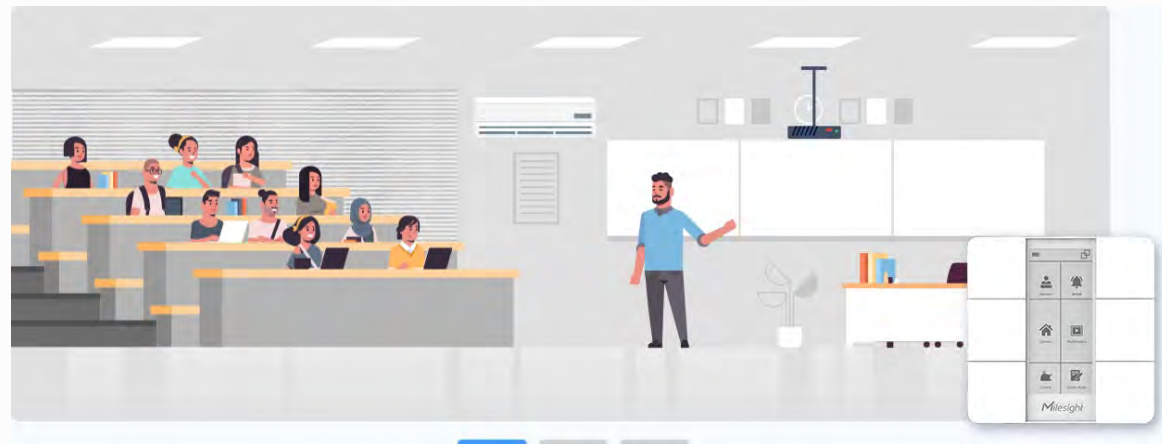
WS136

PVC Sticker

- Equipped with a programmable 2.9" **E-ink screen** (WS156) for flexible display
- **Up to 6 scenes are settable**, each scene can consist of multiple devices
- Equipped with **NFC** for one-touch config, supporting **card emulation mode**
- Compliant with standard **LoRaWAN®** gateways
- **Wireless installation** and multiple installation ways **without wiring**
- Support Milesight D2D to enable ultra-low latency and directly control
- **3 Years Battery Life** (Press 20 times per day)

Customize Display

- Screen display customizable (number/letter/ image)



WS50X SMART WALL SWITCH D2D

Milesight

Electricity Consumption Monitoring and Light Control

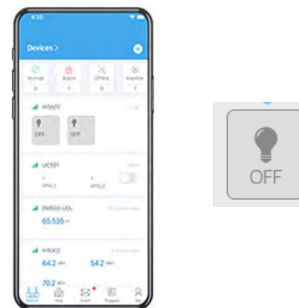


- Various Types with 3-Wire with Neutral / 2-Wire without Neutral
- Turn on/off devices on site and create timing switch-on/off schedules remotely
- Collect **current(mA)**, **voltage(VAC)**, **power factor(%)**, **power(W)** and **power consumption(kWh)**. (3-wire with Neutral only)
- Support **surge and overload protection**
- Support local or remote control via **high-reliability relay**
- **Built-in LED indicator**, easy to use in dark environment

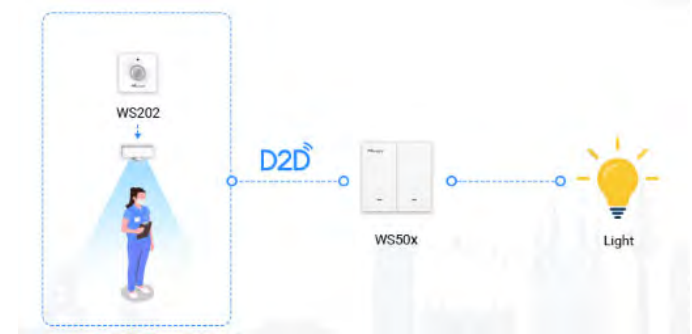
Time-Based ON/OFF



Remote ON/OFF



D2D ON/OFF



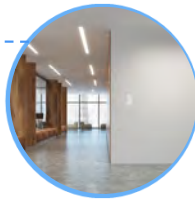
MILESIGHT LIGHTING CONTROL SOLUTION



The adoption of Milesight energy-efficient lighting control solution presents a compelling opportunity for substantial cost savings and a simultaneous reduction in carbon emissions for building occupants.

Manual Control

- Manual On/Off of lights by WS50x
- Adjusting brightness levels by DALI controller



Daylight Harvesting Control

- WS202 PIR & light sensor: Adjust lighting based on natural light
- Collaborate with UC300 controller: Make intelligent decisions for opening daylight blind



Scene Control

- The WS156/136 scene panel
- Achieve seamless switching for different activities
 - One-touch control for multiple lightings



Motion Sensing Control

- WS202 / VS351 Sensors: Automatic lighting control based on occupancy
- WS50x smart wall switch triggered by presence and occupancy sensors



Wireless Remote Control

- Wireless lighting installation without surface reconstruction
- App-based control of wireless lighting with Milesight IoT Cloud



Easily Retrofittable

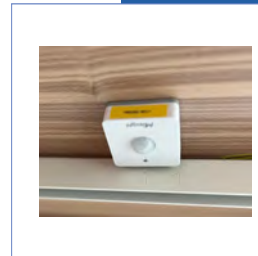
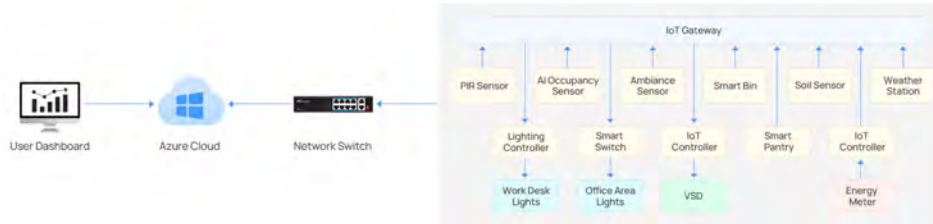
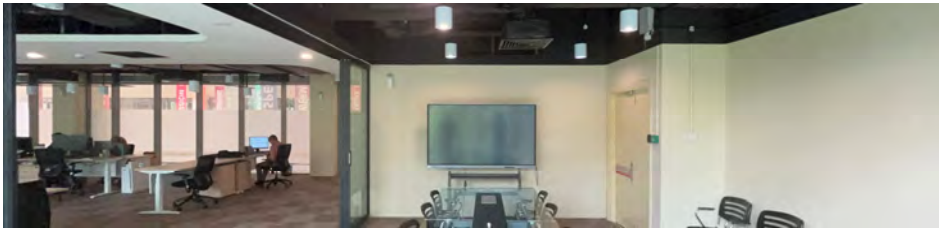
- Wireless expansion of wired installations
- Incorporating wireless technology into wired installations.



SUCCESS STORY- WORKPLACE LIGHTING OPTIMIZATION

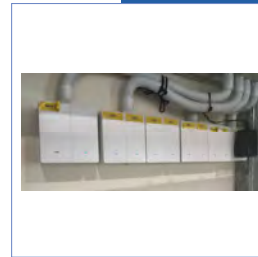


Location: Johor Bahru, Johor, Malaysia



- **Light Automation through 64 Sensors**
- PIR (Passive Infrared) and Light Sensor WS202-915M
- Smart Wall Switch WS501-915M (86-Type)
- Smart Light Controller WS558-915M

Solutions



- Automated Lighting Control **in General Office**: Lights switch on/off automatically based on ambient conditions (50% / 75% / 100% Lights ON/OFF).
- **Individualized Desk Light Control**: Customizable desk light switch on/off based on desk occupancy. AI Workplace Occupancy Sensor (VS121) combined with Smart Wall Switch (WS501) enables this feature.



Benefits

- Minimize electricity usage by optimizing lighting control and individual desk light management.

MILESIGHT ENERGY EFFICIENCY SOLUTIONS

Energy Consumption Measurement

Electrical Appliances
Distribution Box
Circuits
Power Current, Voltage,



Power Factor, Power
Power Consumption
Meter Reading



HVAC Control & Management

Lighting Control & Management

Related Product Series

CoWork Series



Smart Current Transformer

Smart Sockets

CHALLENGES IN MONITORING ENERGY CONSUMPTION



Initial Investment

- Decreasing **initial equipment cost**
- Reducing **installation cost**



Data Quality and Accuracy

- **Fine-grained measurements** of power consumption
- **Staff training** for accurate data recording and reporting
- **Faulty meters, inconsistencies, human errors,** and missing information.



Presentation of Information

- Encouraging **behavioral modifications**
- **Clear visualization** of energy usage in the building
- Convenience for FM in **accessing the data**



Installation Complexity

- Costly **professional services** requirement
- Expensive installation by **licensed technicians**



Optimization of Systems

- **Non-intrusive load monitoring** approach
- **Distributed sensor-based monitoring** approach
- A potential **hybrid approach** for optimal efficiency



Regulatory Compliance

- **Varying standards and requirements** across regions, countries, and industries
- **Implementation of measures** like energy audits, renewable energy sources, and smart metering

HOW DOES IOT WORK IN ENERGY CONSUMPTION MONITORING?

Network Layer



Cloud



Web-based Dashboard



Tablet & Smartphone

Network Layer



Gateway Controller

Sensing Layer



Relays



Motion Sensor



IAQ Sensor



Thermostat & Valve



Energy Meter



Pulse Counter



Plug Load Sensor



Current Transformer

Energy Appliances



Lighting



HVAC



Plug Loads



Distribution Box Circuits

Milesight

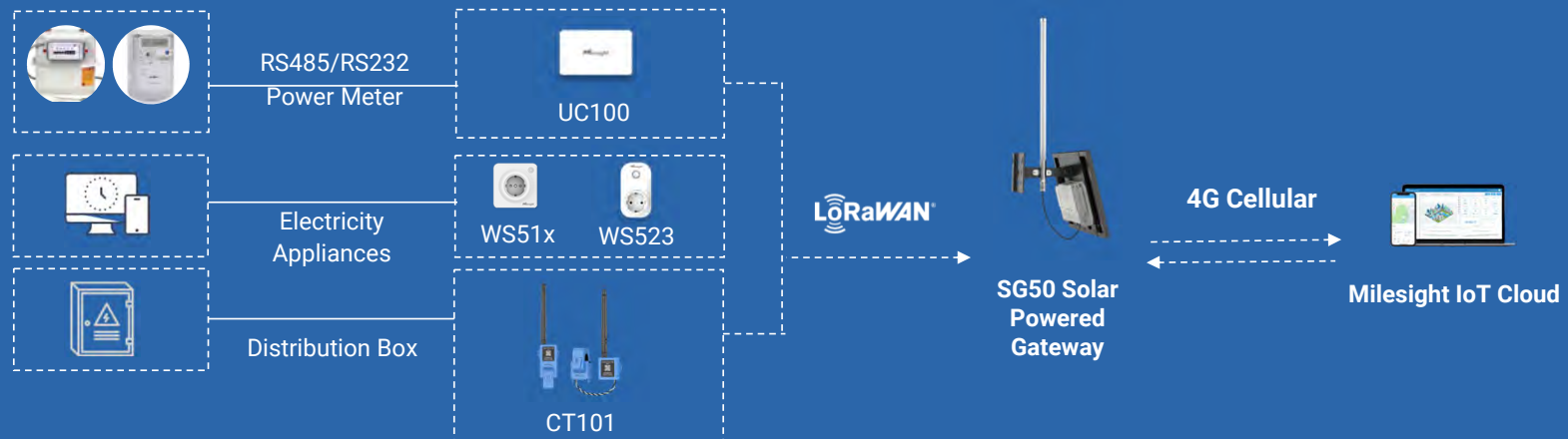


- IoT devices including smart meters, smart relays, and smart plugs
- Distributed systems for monitoring energy consumption and enabling remote control
- Interacting with applications through a network gateway;
- Surpassing the capabilities of utility meters alone;

MILESIGHT ENERGY CONSUMPTION MONITORING



The hybrid approach combines non-intrusive load monitoring and distributed sensor-based techniques



> Accurate Reporting without Replacement

- No requirement for replacing current electricity meters
- Real-time tracking of energy consumption without bill estimation
- For internal monitoring purposes, data not for utility suppliers

> Solar Power for Energy Efficiency

- Gateway (SG50) uses solar panels for self-sufficient power
- Using renewable energy without an external electricity supply
- No modifications to the building's existing power grid

> Socket Load Remote Switching

- Access to electrical appliances related to energy usage and loads
- Remote power disconnection to any unnecessary running devices
- EnergyStar shows desktop computers waste up to US\$50/year

> Measurement of Distribution Box Circuits

- Current transformers measure the magnitude of electrical current
- Integration of data into a smart grid or energy management system
- Remote monitoring and control of the power network

CT SERIES: SMART CURRENT TRANSFORMER

Milesight CT Series, the LoRaWAN® Smart Current Transformer has the following features:



Powered directly by the circuit under testing, no batteries are required (USB Type-C also available)



Non-intrusive and quick installation process ensures no damage to the circuit or disruption of power supply.



Support up to **3.3kHz sampling frequency** for reaching a higher accuracy for current value measurement



Allows for determining energy consumption direction and offers **automatic calculation of cumulative ampere-hour values once per second.**



Users are allowed to input the nominal voltage(V) & power factor($\cos\Phi$) to calculate the **general power consumption (W)** and get informed by the **tendency of changes and abnormalities.** (will be supported by cloud)



With its compact design and powerful features, it is easily installed in various settings.

Avail.

> CT10x Single-phase Current Transformer

May.

> CT30x Three-phase Current Transformer

Rated Current:

- CT101 100A
- CT103 250A

Phase Position:

- Single Phase

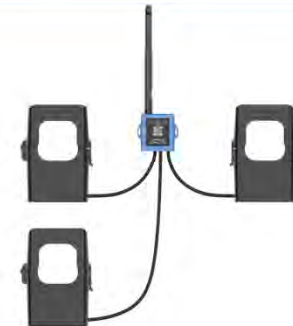


Rated Current:

- Offers 500A & 1000A Versions

Phase Position:

- Three Phase



WS523/51X SMART SOCKET

Provide a Cost-effective Solution in Managing Electricity

Milesight



WS523

Smart Portable Socket

(Type-G/I/B/C/A+I)



WS51x

Smart Wall Socket

(Type-E/Type-F)

- Allow for remote, time-based, local button control
- Make the electrical system manageable
- Support quick response through Milesight D2D
- Easy configuration with NFC
- Precise monitoring of energy consumption guides effective energy-saving renovation & optimization

Electricity Consumption Monitoring and Control

- Plug and play **without any wirings**, adopt most of international socket standards
- Turn on/off devices and create timing switch-on/off **schedules remotely**
- Collect **current(mA), voltage (VAC), power factor (%)**, **power(W)**, **power consumption (kWh)** and support **overload protection**
- Equipped with a capacitor for **power outage alert**
- **Button-lock** feature helps remotely lock the physical button
- Support local or remote control via **high-reliability relay**
- Group control with a multicast of up to 4 devices



IoT Solutions for Concert Hall Energy Efficiency



Milesight

Milesight Partner

 **monolithic**

Location

Barcelona, Spain

Background & Challenge

This project was implemented to monitor electricity consumption in a concert hall for better control. IoT was chosen to accurately measure real-time electricity usage.

Solutions & Products

Our client chose Milesight's CT101-868M devices due to prior positive experiences with their products. They offer quality, ease of installation, and meet sustainability criteria crucial for this project. 15 units of CT101-868M devices were deployed to monitor the concert hall's 15 electrical circuits.

Benefits

The main improvements include: electricity consumption control, cost reduction due to easy installation (no need for external contractors), and enhanced sustainability through energy consumption management.

MILESIGHT ENERGY CONSUMPTION MONITORING SOLUTION

Milesight smart sockets and current transformers allow for monitoring more fine-grained energy consumption.

Cost Saving

By measuring utility consumption, you can identify inefficiencies and waste, which can lead to cost savings on energy bills.

Sustainability

It can help to reduce your building's carbon footprint, contributing to a more sustainable future.



GREEN ENERGY

Operational Efficiency

It enables a new type of billing such as time-of-use tariffs, eliminates the need for location visits from meter readers, and provides FMs with real-time data.

Compliance

It can help FMs to comply with energy efficiency regulations and standards. In the US, meeting energy performance standards is a mandatory requirement for businesses.

03

CONNECTIVITY PRODUCT LINE

- LoRaWAN® Gateways
- Industrial Cellular Router
- Software & Platforms

MILESIGHT ENERGY EFFICIENCY SOLUTION REQUIRES

Milesight High-performance LoRaWAN® Gateways help with building a comprehensive energy efficiency solution.

Mini Gateway UG63

Ideal for Covering Blind Spots



- IP30 & Mini Size for Flexible Installation
- Massive Connectivity

Industrial Gateway UG56

Ideal for Indoor Industrial Scenarios



- IP 30 & Industrial-Grade Design
- Compact size with extended antenna
- Complementary with UG65

Semi-Industrial Gateway UG65

Ideal for most general-purpose scenarios



- IP65 and UV Resistance
- NXP Quad-Core Processor
- Stay Connected via Ethernet, Cellular, and Wi-Fi

Outdoor Gateway UG67

Ideal for Networking in Large Areas & Outdoor Scenarios

- IP67 and UV Resistance
- 64-bit Quad-Core Processor
- Built-in Supercapacitor



Ultra Low Power Solar Gateway SG50

Independent Network & Fast Deployment & Low Maintenance Solution

- Built-in Rechargeable Batteries & Accessorial Solar Panel
- Support Cellular for Backhaul Network
- Easy & Simple Deployment even in Remote Regions
- Support Typical Use for up to 4 Days Without Sunlight
- Highly Compatible with Mainstream Network Servers



BACnet Supported (Except UG63/SG50)

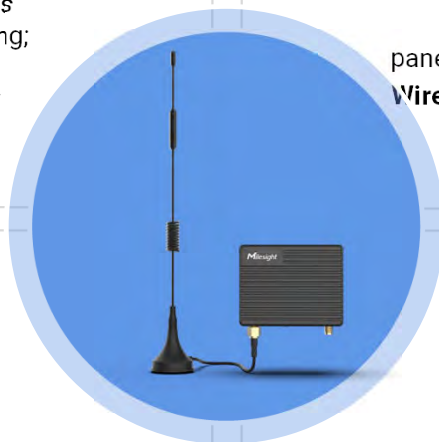


MILESIGHT ENERGY EFFICIENCY SOLUTION REQUIRES

Milesight industrial cellular router UR41 helps remote monitoring of building-integrated photovoltaics, providing customers with the ability to manage their energy consumption as effectively and cheaply as possible.



- **BIPV modules** are suitable for integration into roofs and façades of a building;
- Buildings from **energy consumers into energy suppliers.**



- **Real-time data, historical data, and energy output** of solar panels with **Modbus** connection. **Wireless data transmission** to a platform for integration.



- **Remote access and management** capabilities via DeviceHub interfaces.

- **Ultra-low power consumption** unit for energy saving objectives.
Typical: 226mA
Maximum: 260mA



SOFTWARE & PLATFORM

Unlock the key to one-stop IoT solution, covering device connectivity, remote management, data analysis, and decision-making.



Milesight IoT Cloud

Milesight IoT Cloud offers vertical integration with **LoRaWAN® nodes**, providing an intuitive **dashboard** for remote asset monitoring and control.



DeviceHub 2.0

Milesight DeviceHub is a **remote management platform** to easily deploy Milesight devices on a large scale, particularly **routers & gateways**.



MilesightVPN

Milesight VPN is a **web-based platform** that enables secure communication with remote devices through always-on VPN connections.



AIoT Sensing Platform

Milesight AIoT sensing platform is a **device management and data center platform** specifically designed for **sensing cameras**.

MILESIGHT DEVELOPMENT PLATFORM

Building a Closed Product Service Loop, Make Each Step Be Served

✓ Device Management



Device Connection, Device Bulk Configuration
Device Bulk Upgrade, Remote Access
Auto-p for plug-and-play

✓ Open Platform



Open API, Richful Open Resource
Professional Support
Building An Open Ecosystem



English, Lithuania, Polish, Swedish, **French**, Spanish

Milesight IoT Cloud

Account: `iot.demo@milesight.com`

Password: MilesightIoT2021

Login with Password

* Email Address:

* Password:

[Forgot Password?](#)

Login

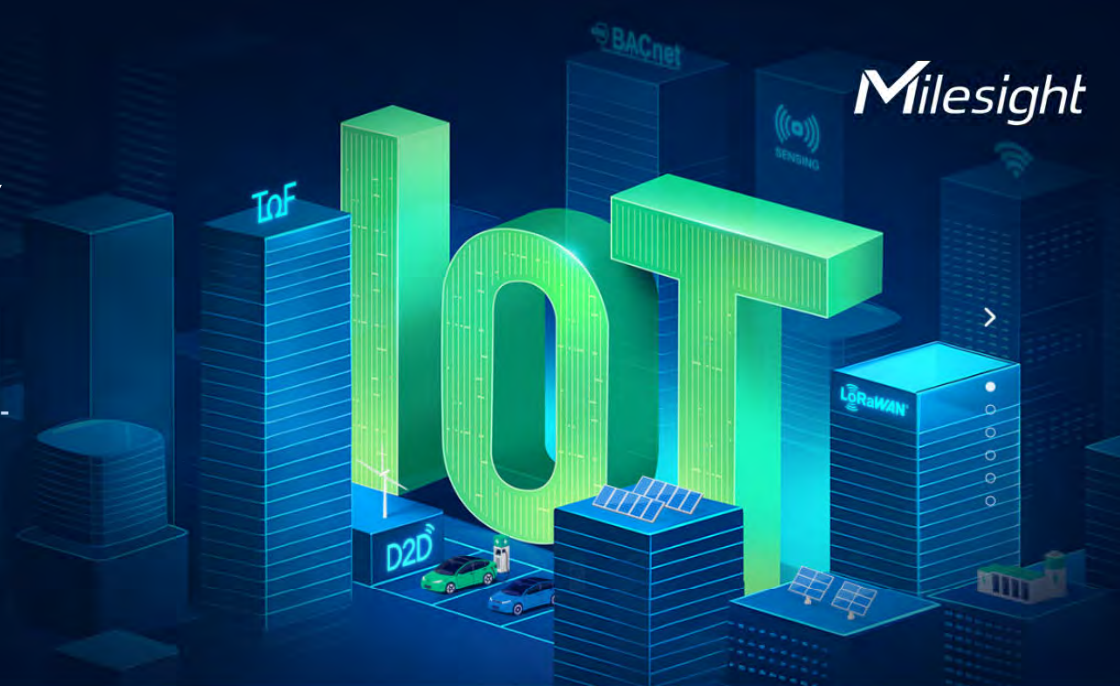
[Register Now](#)

ONLINE DEMO, FREE REGISTRATION

Multiple Languages

ACCELERATING ENERGY EFFICIENCY TOGETHER

Milesight is the best partner when it comes to making energy-efficient solutions in your commercial buildings.



Collaborative Approach

Join Milesight in envisioning a partnership built on **collaboration, cutting-edge technology, and shared ambitions;**



Partner with Professionals

A stronger energy efficiency partnership with the **professionals in HVAC, Lighting, Energy Consumption and Solar photovoltaic** solutions for commercial buildings;



Stay Connected

Stay tuned in the coming months for some exciting announcements, including the brand-new **DALI brightness controller** and **three-phase current transformers;**

IOT SOLUTIONS WORLD CONGRESS 2024

GRAN VIA VENUE, Barcelona, Spain

Milesight | monolithic | IOT SOLUTIONS WORLD CONGRESS

Meet Us at IOTSWC 2024
Explore IoT Solutions Together

Booth: **C93**
Date: MAY 21 - 23, 2024
Location: GRAN VIA VENUE, Barcelona, Spain

WHAT

Looking to stay ahead of the curve in the rapidly-evolving world of industry? Look no further than IOTSWC 2024 – the premier event for digital transformation trends and disruptive technologies.

At IOTSWC 2024, you'll have access to the latest insights and best practices from thought leaders across the industry, as well as exclusive previews of cutting-edge technologies and game-changing innovations.

✓ GRAN VIA VENUE, Barcelona, Spain

✓ Booth: C93

✓ Time and Date: MAY 21 - 23, 2024

Milesight

THANKS FOR WATCHING



iot.marketing@milsight.com



www.milesight.com
www.milesight-iot.com



Building C09, Software Park
Phase III, Xiamen 361024,
Fujian, China