



Product Catalog

Contents

Systems

Red5 Plus

Red5 Edge

Red5 Field

Red5 Modules

DAC PoE VAV Controller

DVC Delta VAV Controller

DVC PoE VAV Controller

enteliBUS

enteliZONE Fan Coil Controller

eZVPE Dual Port Ethernet VAV Controller

Room Control

Red5-Plus-Room

Red5-Edge-Room

Red5-Expand-04

03 Hub

03 Sense

03 Edge

Seymour Connect

Proviso

eZV enteliZONE VAV Controller

eZNS enteliZONE Network Sensor

eZNT enteliZONE Network Thermostat

CON-ENOC EnOcean Integration

Software

enteliWEB

enteliCLOUD

enteliVAULT

Cloud Engineering

Commissioning Module

Data Transfer Module

Earthright Dashboard

Facility Scheduler

Access Control & Lighting Control

Red5 Access System

Red5 DALI

Equip

UNO IAQ Monitors

enteliVIEW

enteliPREM

VIVOTEK Network Cameras

JACE® 9000

EQUIP Portfolio

Delta Controls Certifications

Certifications

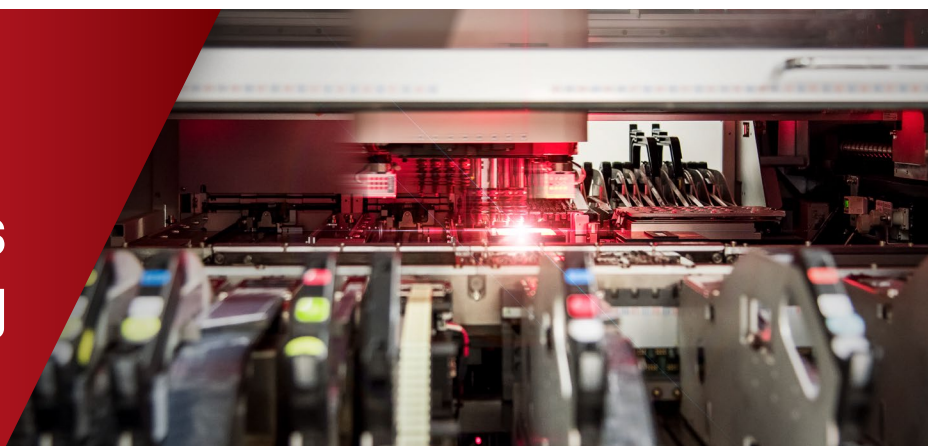


About Delta Controls

Global. Approachable.

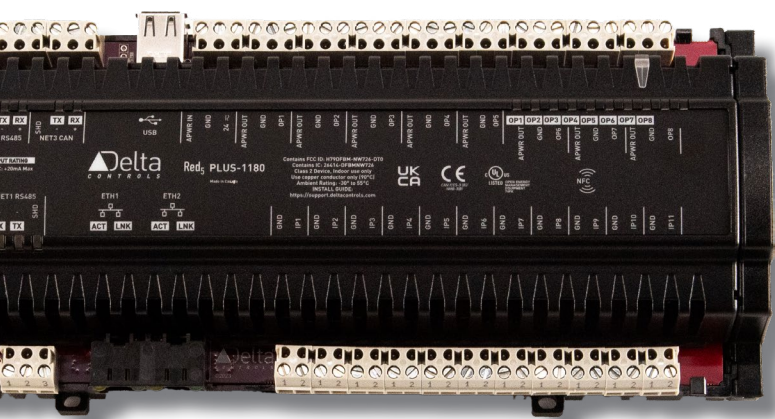
Delta Controls is a renowned industry leader in building automation control with a global presence spanning over 80 countries and a network of 300 service providers. For more than four decades, Delta Controls has been at the forefront providing reliable and user-friendly control solutions in commercial, healthcare, education, leisure markets, and beyond.

One of the largest original equipment manufacturers in Canada; Delta Controls leads the way in complete building automation solutions.



Say Hello to our Customer Services Team

Delta Controls Customer Services team is made up of world-class professionals specializing in sales support, orders fulfillment, shipping and aftercare support. Our team prides themselves on providing exceptional care and service, making our customers' lives easier and cost-friendly.

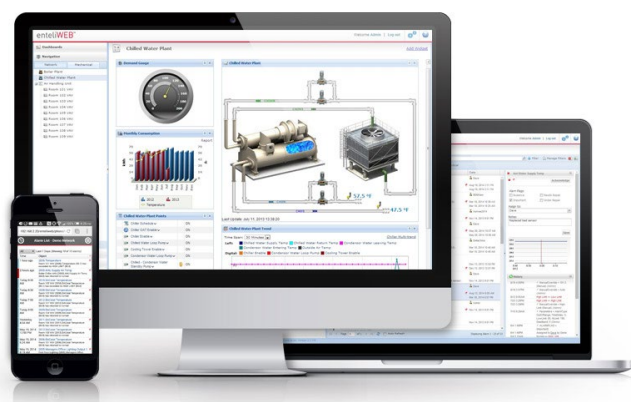


Red5 Plus

Securing The Future of Your Facility

Flexibility, foundation and future embodied in the next generation of Delta Controls DSC Controller: the Red5 PLUS. A modular format offering faster processing and increased memory, these IoT system controllers use traditional area and subnet architecture along with GCL+ Programming.

Unleash the power of your BMS with secure, scalable integration, with expandable I/O, and advanced IoT features.

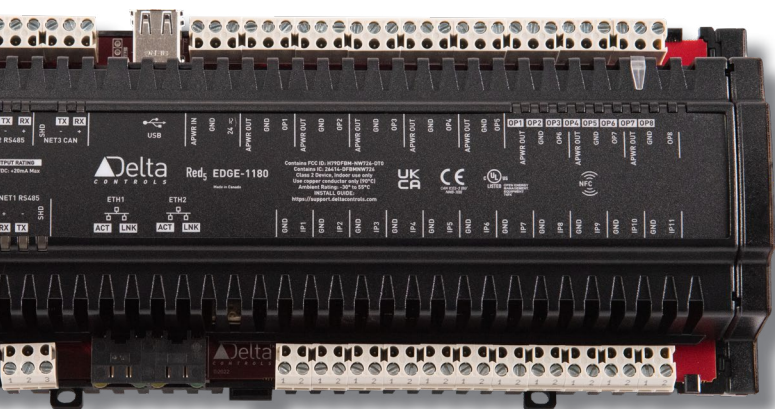


Key Features

BACnet/SC for Secure Remote Access.

Interoperable Open Protocols for Integrated Ecosystems.

Native BACnet advanced IoT Controller w/Node Red Support and Loadable Python Modules for maximum system integration and interoperability.



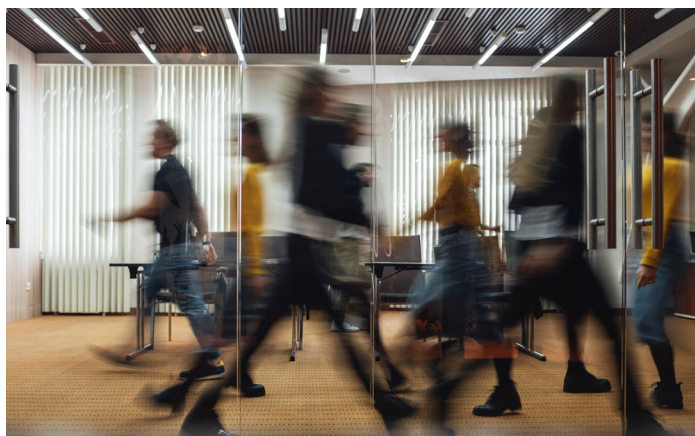
Red5 Edge

The Leading Edge of Building Technology

Meet the next generation of Delta Controls native BACnet controllers with secure and scalable IoT connectivity. Red5-EDGE offers faster processing, increased memory, enhanced security and endless possibilities. Red5-EDGE reduces installation costs by saving you time with updated workflows and reduced site visits.

With its open protocol integration, embedded web server, BACnet/SC and expandable I/O, Red5-EDGE is a powerful, fully programmable BACnet building controller that comes in a variety of I/O configurations. It has native support of BACnet Ethernet/IP, MS/TP, MODbus, LINKnet and our new Red5BUS.

Breathe new life into your building with a robust, powerful controller that sets the standards for today's building controls technology.



Key Features

Native BACnet for System Interoperability.

High-speed Ethernet/IP w/Dual Port Daisy chain Topology.

Multiple IO footprints incl. Universal Inputs and Expandable Universal I/O.



Red5 FIELD

Flexibility. Foundation. Future.

Meet the next generation of Delta Controls MS/TP Building and Application controllers. Red5-FIELD offers faster processing, increased memory, and the power needed for advanced building control algorithms.

Red5-FIELD replaces the highly successful DAC product line, with an easy, pin-for-pin retrofit controller, increased GCL+ programming space and added USB port for future enhancements. It's a fully programmable, native BACnet MS/TP controller that comes in a variety of capabilities and I/O configurations to fit the needs of every project.

**Give new life to your MS/TP
Controller Subnetworks.**



Key Features

Faster Provisioning and enhanced workflow.

Native BACnet MS/TP for seamless retrofits and interoperability.

Fully Programmable for Application Flexibility.



Red5 Modules

Total Room Integration

The Red5 Room Controller uses modular, universal I/O to take control of HVAC, access, dimmable and Correlated Color Temperature lighting at the room level. Connect with DALI, EnOcean, and Modbus to take total control of multiple rooms without running sub-networks. Complete room control, overall efficiency.



Red5-PLUS-ROOM

A fully programmable native BACnet multi-room controller supporting multiple communication protocols.



Red5-MODULE-EXPAND 04

Allows for remote expansion of up to 4 Red5 Modules to the Red5-ROOM and Red5-PLUS/EDGE platforms.



Red5-MODULE-8xP

Features 8 software configurable, universal I/O points to provide maximum flexibility for a given application.



Red5-MODULE-DALI

The Red5 DALI module allows your system to control the DALI devices in your space.



Red5-MODULE-SMI

Provides connectivity between BACnet BAS & SMI motor drives including blinds or other window coverings, installed within the same system.



Red5-MODULE-4FxP

Allows flexible I/O designed to control various loads or drive high-current relay coils with universal points.



Red5-MODULE-PoE

Adds PoE capability to the Red5-ROOM controller.



Red5-MODULE-1D00R

Provides remote, fully programmable, door access control & expanded I/O capabilities.



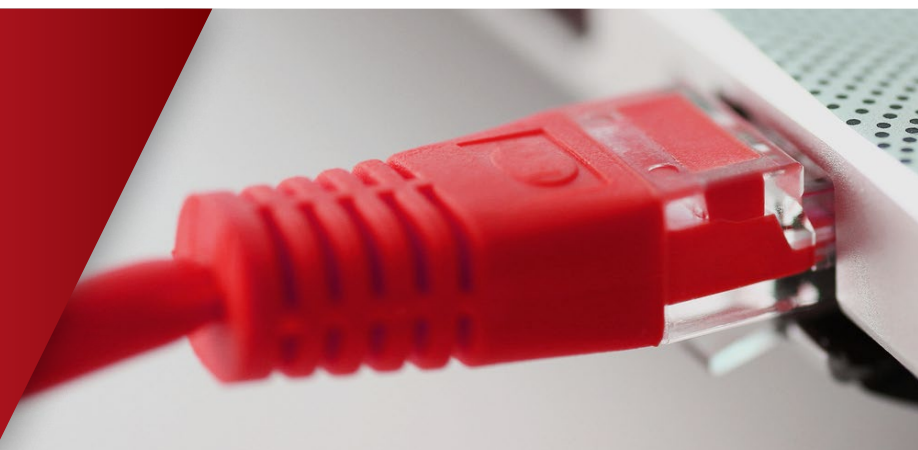
DAC PoE

Delta Controls Application Controllers + Power Over Ethernet

The Delta Controls Application Controller PoE is a powerful, fully programmable BACnet controller featuring Power over Ethernet (PoE). PoE provides high-speed communication and power with a single Ethernet cable.

Eliminating the need for additional wiring, the DAC PoE reduces the complexity of your system by leveraging your existing IT infrastructure.

Leverage your existing IT infrastructure and eliminate costs with the power of a single Ethernet cable.



Key Features

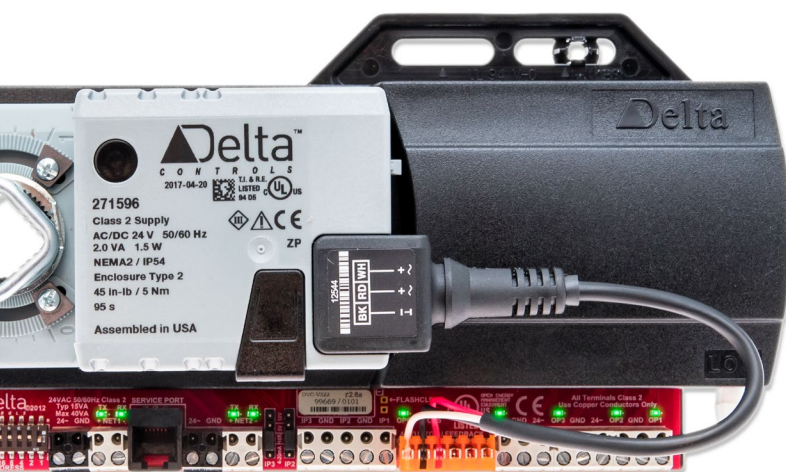
Simplify Wiring

Eliminate the costs and complexity associated with additional wiring.

Flexibility

Increase the flexibility of your network by simplifying the process of adding new equipment to your system.





DVC

Ensuring a Strong, Dependable Facility

Delta Controls VAV Controllers are the smart choice for any VAV project. With integrated choice of Siemens or Belimo actuators and multiple I/O options, DVCs are the fully programmable solution for any VAV configuration. Use [DVC PoE models](#) to simplify your network, reduce wiring costs and get more data from your system.

Delivering reliable occupant
comfort with precision.



Key Features

More Options. More Data.

Using Ethernet or PoE at every level of your network allows you to get more data out of your system. This makes building analytics more powerful and gets you ready for the IoT networks of the future.

Tackle Any VAV

DVCs come with multiple actuator options and I/O configurations. They're fully programmable so you can handle any configuration of VAV.

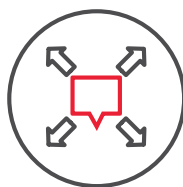
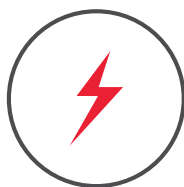


DVC PoE

Power Over Ethernet VAV Controllers

The Delta Controls VAV Controller PoE provides a powerful and economical solution for VAV applications. With Power over Ethernet (PoE), the DVC PoE provides high-speed communication and simplified wiring with a single Ethernet cable.

With a single cable, you'll get high-speed communication and simplified wiring.



Key Features

Fully Integrated

With direct mount housing, the DVC PoE integrates the controller, damper actuator and airflow sensor into a single, easy to install package.

Power and Speed

Improve your analytics by getting fast, reliable data from the lowest level of your network with the DVC PoE.



enteliBUS

Modular. Expandable. Flexible.

The enteliBUS Control System is a powerful, fully programmable BACnet controller that features modular, expandable I/O up to over 300 points. enteliBUS has hot-swappable I/O modules for fast and easy installation. With HAO switches, save your equipment from short cycling and make troubleshooting a breeze. Use enteliBUS as a BACnet router or join multiple network segments.

Join multiple network segments while reducing troubleshooting downtime.



Expandable to over 300 I/O points

Key Features

Hot Swappable

Multiple, configurable modules can be changed out while enteliBUS is powered. Reduce downtime for troubleshooting.

HAO Switches

Outputs use manual Hand-Auto-Off switches. You can change from Auto to On or Off without short-cycling equipment.

Connectivity & Security

BACnet BBMD and BACnet Secure Connect Routing.



eZV enteliZONE

Fan Coil Controller

The eZV-440 covers a wide range of VAV configurations including multi-stage reheat with analog, binary or floating control, and series or parallel fan boxes. The eZV-440 includes built-in algorithms that are easy to configure for typical VAV/VVT applications. The eZVP-440 is a fully programmable model that allows you to either create your own completely custom zone programs or modify the built-in algorithm's behavior.

Take advantage of pre-built algorithms to make diverse applications possible.



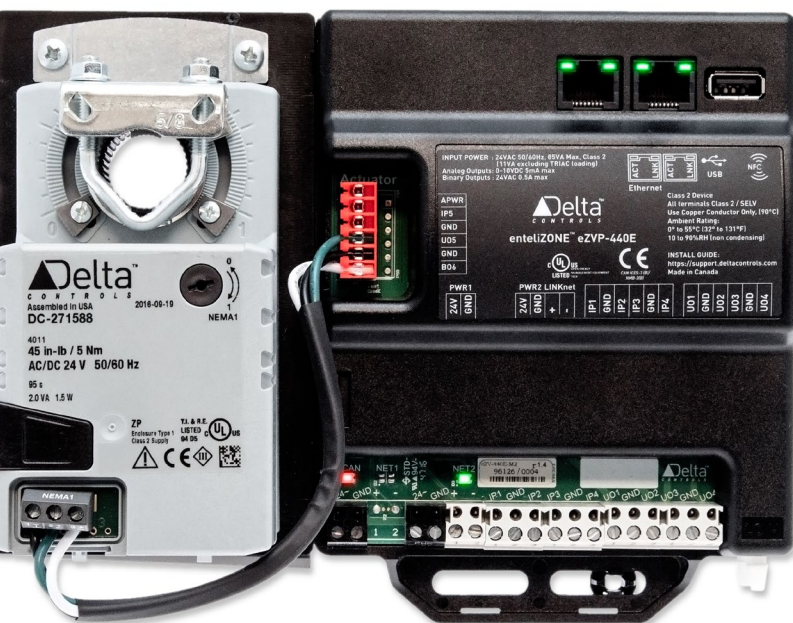
Key Features

Flexibility

With multiple actuator options and universal I/O configurations, the eZV can handle any configuration of VAV.

Customizable

Programmable option allows modifying algorithms or creating completely custom zone control.



eZVPE

Dual Ethernet Ports

With dual Ethernet ports, the eZVPE gives you the power to build network segments without the need for running new Ethernet cable for each controller. By linking multiple eZVPE controllers in your system, you will not only save on installation cost but create an easy to troubleshoot, networked solution.

Handle any VAV configuration with simplicity of daisy-chain topology paired with the speed of Ethernet while saving on cost.



Key Features

Flexibility

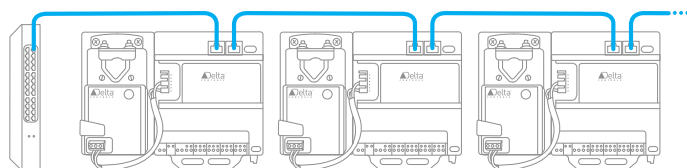
With multiple actuator options and I/O configurations, the eZVPE can handle any configuration of VAV.

Dual Ethernet

Connect a chain of multiple eZVPE controllers using high-speed, dual Ethernet ports.

Customizable

Programmable option allows modifying algorithms or creating completely custom zone control.





Red5 Plus Room

Total Room Integration

The Red5 Room Controller is DIN rail mountable and combines modular I/O with room-level integration.

Red5 is a complete solution that combines HVAC, access and lighting control in a modular system. It combines multiple protocols and I/O points in one unit.

**Control multiple rooms.
Integrate with multiple
systems.**



Key Features

Universal I/O

No more inputs and outputs. Use universal points to control or read from field equipment. Reduce engineering and product costs by being able to use every point on the board.

Excels at controlling multiple rooms

Control HVAC, access and lighting with just one system.



Red5 Edge Room

Total Room Integration

A fully programmable native BACnet building controller, Red5-EDGE-ROOM supports multiple communication methods, including BACnet/IP, BACnet over Ethernet, BACnet MS/TP, and Delta LINKnet.

Control all aspects of a room
and integrate with systems
seamlessly.



Key Features

Availability

Program or work on graphics from anywhere with an internet connection with unlimited users per account for one price.

Faster Project Cycles

Finish programming your controllers and pass the virtual site over to the graphics developer while you start up another site and continue programming.

Increased Collaboration

All virtual sites are accessible to all team members at the same time. Finish a job that another engineer started, or work with your entire team to complete a large project.



Red5 Expand 04

Expanding Red5 Throughout Your Facility

The Red5-EXPAND-04 power injector extends the reach of the Red5 system by increasing the number of Red5 modules that can be controlled by a single Red5-PLUS-ROOM controller. These power injector expansions can be located up to 70 m (230 ft) away from the controller.

Expand your Red5 Controller's I/O Capacity wherever needed.



Key Features

Future-proof Retrofits

Integrate with technologies outside of traditional building control systems.

Expandable Universal I/O

IoT Controller with Node-Red Support.

Supports BLE and NFC Technologies

Dual USB2 Ports &



O₃ Hub

Think. Sense. Speak.

With a top-down view from the center of the room, the O3 Sensor Hub detects motion, sound, light, and temperature with new levels of accuracy. With a complete sensor package, O3 provides your BAS with the data it needs to make economical and occupant-friendly decisions.

The O3 HUB is available as a companion device to our O3 Room Controller.

Use sensor fusion to detect motion, sound, light, temperature, and occupancy with new levels of accuracy.



Key Features



Detect occupancy using sound and motion



Communicate with occupants via RGB light ring and integrated speaker

SENSOR FUSION



Measure surface temperatures precisely with IR sensors



Offer control of temperature, humidity, light, and motion in a single package
Control other devices using the on-board IR blaster



Save time with easy-to-install mounting plate



O₃ Sense

Think. Sense. Speak.

Delta Controls' award-winning O3 Sense standalone multisensor uses industry leading sensor fusion technology to deliver the most accurate view of an interior space available on the market. Integrating temperature, humidity, motion, sound, and light sensing in a single device, the O3 Sense uses machine learning to provide fast, accurate feedback on the monitored space.

**Standalone Multisensor,
Configurable.**



Key Features

- Advanced sensing through Sensor Fusion.
- Occupant feedback via RGB light ring and integrated speaker.
- Quick workflow using the Proviso provisioning app.
- Supports the Seymour Connect occupant app.



O₃ Edge

Think. Sense. Speak.

Delta Controls' award-winning O3 Edge standalone multisensor uses industry leading sensor fusion technology to deliver the most accurate view of an interior space available on the market. Integrating temperature, humidity, motion, sound, and light sensing in a single device, the O3 Sense uses machine learning to provide fast, accurate feedback on the monitored space.

**Standalone Controller,
Multisensor, 2 Uniputs,
Programmable.**



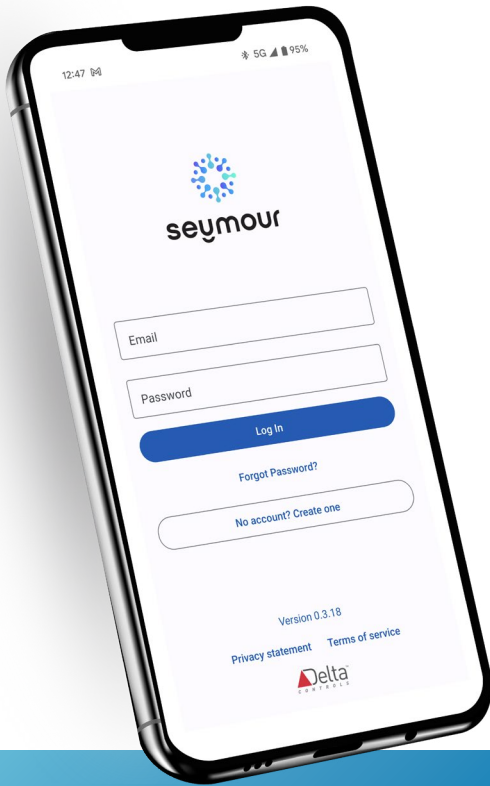
Key Features

Measure occupant located/situated temperature precisely with combined IR and traditional sensors.

Accurate occupancy detection using sound and motion.

Communicate with occupants via RGB light ring, integrated speaker or the Seymour Connect app.

Integrate via the IR blaster, optional on board I/O or EnOcean connectivity.



Seymour Connect

See More. Do More.

The Seymour Connect mobile app is the standard touchless occupant interface. It provides a simple way for occupants to monitor and control their environments and interact with Delta Controls' devices.

As an occupant using the Seymour Connect mobile app, you'll be able to monitor several room parameters based on the configuration and the available systems and sensors in the space. These could include temperature, humidity, light level, occupancy, and more!

As a building owner or facility manager, Seymour Connect is easy to configure and setup using the cloud-based Seymour Connect Portal.

Seymour Connect mobile app available soon!

Take Control of your Comfort.



Key Features

Enable occupants to monitor & control indoor environments from mobile phones.

Manage & scale buildings, devices, & users from cloud-based Portal.

Build custom mobile app configurations to meet application-specific requirements.

Connect to spaces quickly & conveniently using QR Code Access.

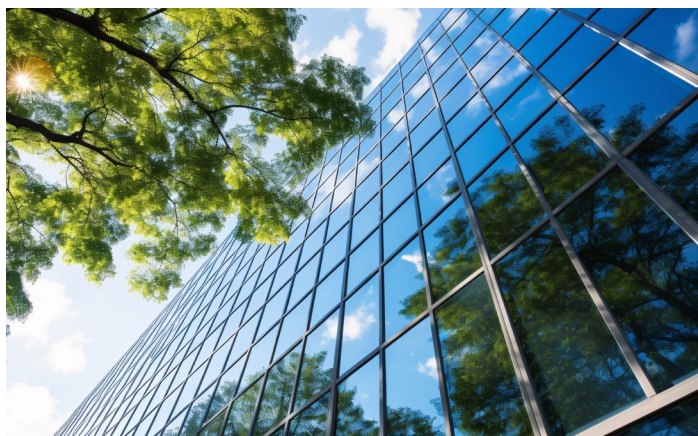
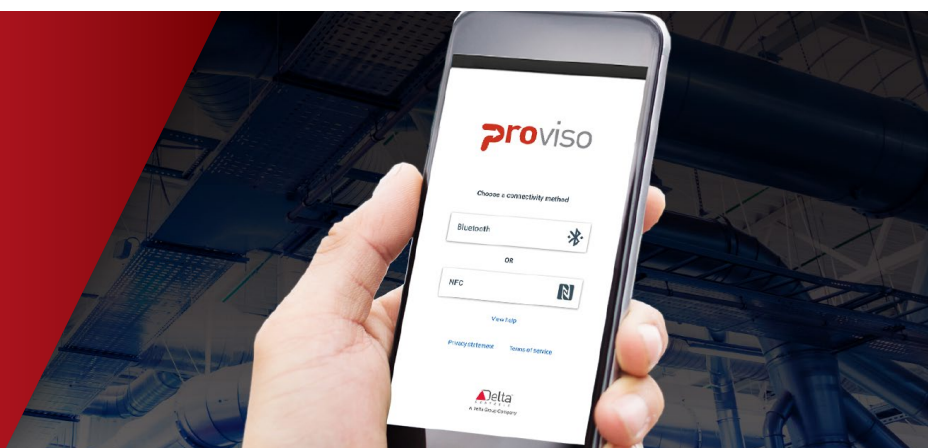


Proviso

Connect & Configure

The Proviso App is a mobile application for iOS and Android which allows users to directly connect to Delta Controls devices and configure them through BLE or NFC.

**Provision, calibrate, monitor,
upgrade, and configure Delta
Controls devices.**



Key Features

Provision Delta Controls devices without the need for a network connection.

Calibrate & monitor sensor data.

Review and adjust network configuration, device names, & time settings.

Upgrade Delta Controls device firmware.

Load Delta Controls device databases.



eZV enteliZONE VAV Controller

Flexible VAV – Algorithm, Programmable or Hybrid

The eZV-440 covers a wide range of VAV configurations including multi-stage reheat with analog, binary or floating control, and series or parallel fan boxes. The eZV-440 includes built-in algorithms that are easy to configure for typical VAV/VVT applications.

The eZVP-440 is a fully programmable model that allows you to either create your own completely custom zone programs or modify the built-in algorithm's behavior.

Take advantage of pre-built algorithms to make diverse applications possible.



Key Features

Flexibility

With multiple actuator options and universal I/O configurations, the eZV can handle any configuration of VAV.

Customizable

Programmable option allows modifying algorithms or creating completely custom zone control.



eZNS

enteliZONE Programmable Network Sensor

With fully customizable faceplates and button layout, the eZNS provides you with the flexibility to manage the unique requirements of your building. Notify your users of alerts with configurable colors and customize the interface layout to streamline your occupant experience.

Streamline user experience
with configurable colors and
customizable interfaces.



Key Features

Multisensor

Reduce wiring with temperature, humidity occupancy and CO2 available in a single package. External input for additional door/window contact or temperature sensor connection.

Highly Flexible

Customize color, button interface, programmable operation to meet your needs.

* Optional onboard Motion, CO2, Humidity.



eZNT

Fully Programmable Customizable Thermostat

The eZNT reaches beyond the expectations of standard, network thermostat while remaining focused on cost-effectiveness. Fully programmable and with customizable button overlays, RGB backlighting, and NFC set-up, the eZNT provides the dependable, onboard control you expect from a Delta Controls thermostat. The eZNT provides options for analog outputs or FET relay outputs.

Use a wide array of applications to suit your specific requirements.



Key Features

Fully Programmable

Customize sequences through GCL+ programming.

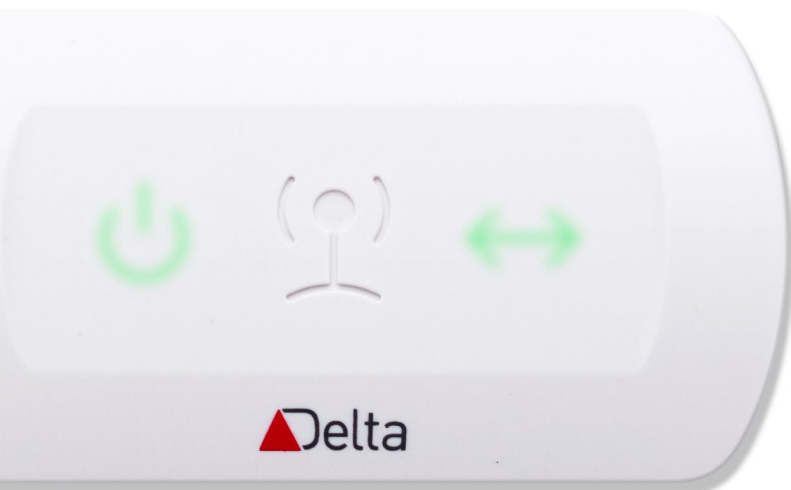
Flexible

On board I/O to handle a wide variety of unitary applications.

Local trending and alarms

Simple setup for troubleshooting and monitoring equipment.





CON-ENOC

EnOcean Gateway

Don't let the cost of wires derail your retrofit project. Add up to 32 EnOcean devices to your system with the CON-ENOC gateway. Directly connected to a Delta Controls controller's RS-485 port, the CON-ENOC is easy to install, fast to configure and saves you money on retrofit and refurbishment projects.

**Creates a dependable gateway
for EnOcean wireless devices
while saving money and
adding functionality.**



Key Features

More Options. More Data.

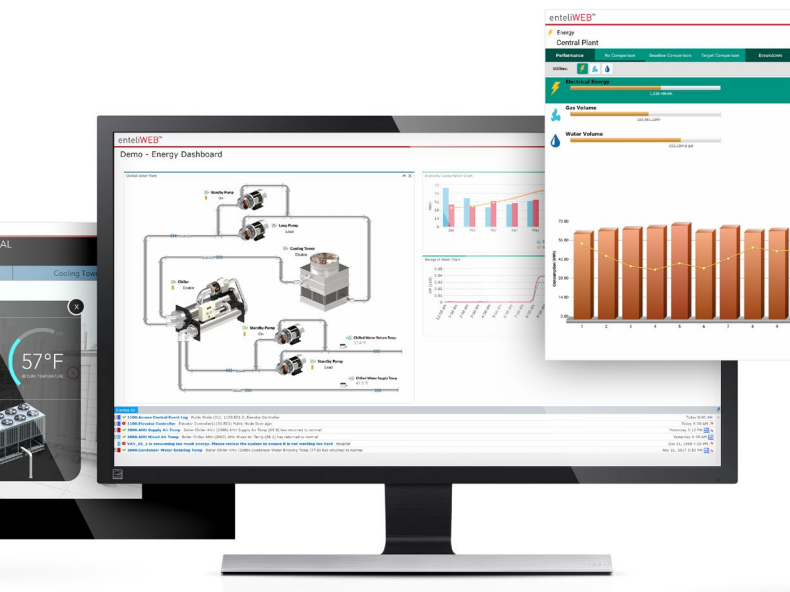
Each CON-ENOC supports up to 32 devices.

Fast Integration

Save device configurations for faster setup or future additions.

Quick Installation

Use screw mounts or the secure adhesive mounting pads to make adding a CON-ENOC to your system quick and easy.



enteliWEB

Facility & Energy Management Software

Manage your facilities from anywhere. Use enteliWEB to centralize your building management operation and collect real-time data about energy use in your facilities. Take action with easy-to-use facility management tools and customizable dashboards for all users. With enteliWEB, the power of your smart building is at your fingertips.

View your building your way
and control multiple systems
through one interface.



Key Features

Engineering Tools

All the tools you need to administrate your building network, with personalized dashboards for every person.

Centralized Energy Management

Take control of your stand-alone building or multi-site network using a consistent, powerful system. With power integration capabilities, alarms, and audit logs, you're never in the dark.

Energy Analytics

Make smart energy management decisions through the intuitive user interface including customizable menus and widgets.



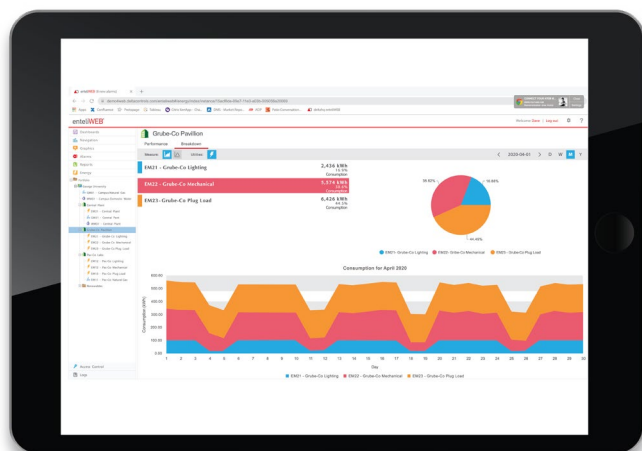
enteliCLOUD

Building Management System Software as a Service (SaaS)

enteliCLOUD is a cloud Software as a Service (SaaS) that securely acquires, transfers, and stores your building automation system data to improve organization, management and savings.

Monitor, operate, and control your portfolio buildings across geographies with your computer or smart device maximizing operational excellence, increasing your property value, and saving energy. And, by delivering a consistently exceptional environment, you boost staff productivity and the value of your portfolio.

enteliCLOUD offers the same features as an on-premise solution at a lower overhead cost with easier deployment & upgrades.



Key Features

Remote Access Control

Monitor and control buildings from home, the office or on the go without requiring onsite staff.

Renewable Energy Management

Manage renewable energy sources in conjunction with energy consumption.

Optimize Business Tactics

Make better business decisions based on up to date building performance data.

Reduce Costs

Reduce costly emergency technician visits by pre-diagnosing problems and fixing them remotely.



enteli**VAULT**

Server Based Centralized Data Archiving

enteliVAULT® is a server-based archiving solution that is available as a license add-on for enteliCLOUD and enteliWEB. enteliVAULT is powerful, secure, and easy to set up and use, with no hardware or software to install or firewalls to manage.

Powerful, secure data archiving.



Key Features

Allows large amounts of data to be stored in a central location that is easy to manage.

Integration with enteliWEB and enteliCLOUD. Easy to set up and use, with no hardware or software to install, or firewalls to manage. Detects and archives all trend logs on site automatically.

Energy Management Integration. Shows energy reports and archived meter data when the Energy Management add-on is enabled in enteliWEB.



Cloud Engineering

Create Networks of Virtual Controllers In The Cloud

Sending an engineer to a site is expensive. Most engineers finish, test, and troubleshoot their programming and graphics links onsite. Why? Because it's the only place where the entire network is available. Host multiple controllers at once, then finish and test all programming and graphics before going on site.

Save the driving time, mileage, and other costs, for one site visit, for one engineer, each month. Plus, no "wall of controllers." No wall means no need to purchase expensive controllers, no electricity costs, less time spent rewiring controllers and your office stays neat and tidy.

Spend less time on site, reduce costs and become more efficient.



Key Features

Availability

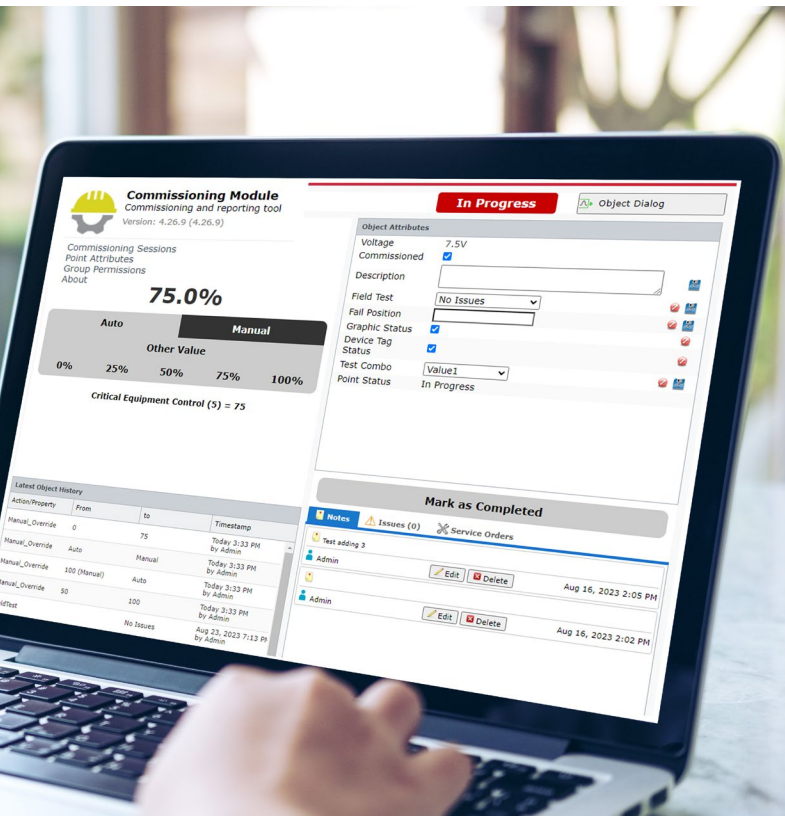
Program or work on graphics from anywhere with an internet connection with unlimited users per account for one price.

Faster Project Cycles

Finish programming your controllers and pass the virtual site over to the graphics developer while you start up another site and continue programming.

Increased Collaboration

All virtual sites are accessible to all team members at the same time. Finish a job that another engineer started, or work with your entire team to complete a large project.



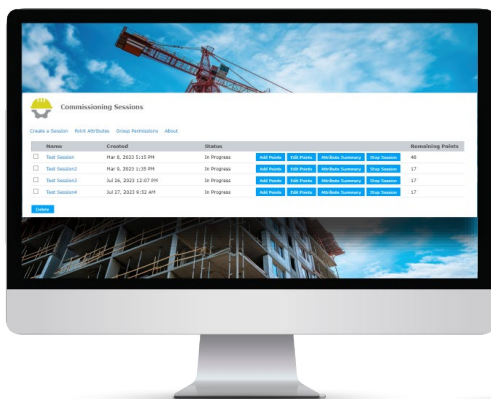
Commissioning Module

enteliWEB Multi-session Commissioning add on Module

Commissioning Module provides a streamlined recording and reporting interface for control system commissioning. Employment of commissioning sessions allow users to divide the commissioning work into distinctive groups, and use the tool both for initial construction and ongoing continuous commissioning programs

A simple dialogue assists the user in guiding through the process to check the DDC values versus manually observed calibration values, check off graphic & tag statuses, add notes for future users to learn context, and set aside any issues to remain on the electronic punch-list.

Drive commissioning workflow and reporting using purpose-built software.



Key Features

Multi-sessions allow running of continuous commissioning programs across multiple sites.

Maintains historical logs of DDC vs observed values for each point in the system.

Custom attributes may be added to each point to track additional information.

Detailed completion and in-progress reports may be generated.



Data Transfer Module

Integrates predictive and live real-time weather station data for any location in the world

Data Transfer Module (DTM) is a licensed enteliWEB Add-On that connects real-time data values between internal and external sources, such as online weather service data updating directly with BACnet controllers. Additionally the DTM may be used to transfer data points between enteliWEB sites that are on separate networks, or it can be used to push or pull data with FTP servers.

Integration engine for weather stations, utilities, energy metering, and other common data transfers.



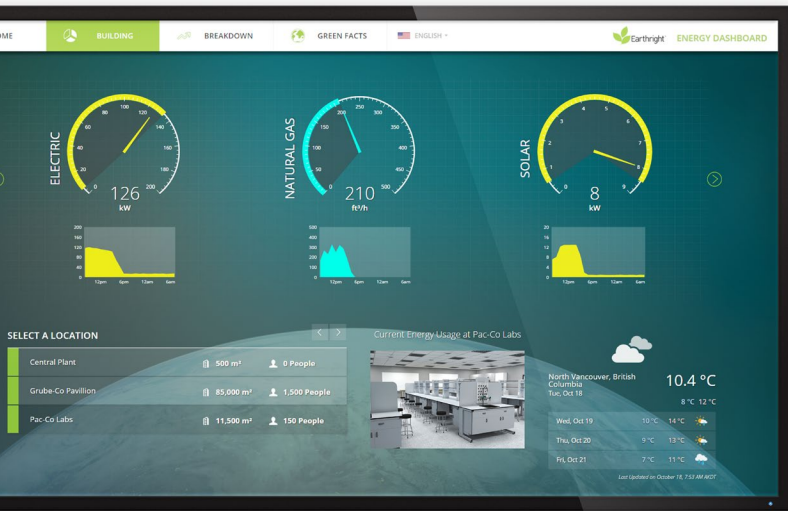
Key Features

Optimize start times, setpoints, and setback routines based on current and future predicted environmental data.

Most regions also provide local outdoor temperatures, humidity, sunlight and cloud cover %, wind speed and direction, precipitation as well as predictive hourly incremental values (up to 10 days).

Add an online data source such as local utility or a new weather service via PDS hire.

Hands-off operation post-configuration: continuous data feed into BACnet controllers and trend logs.

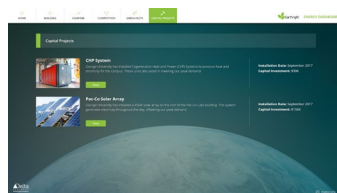
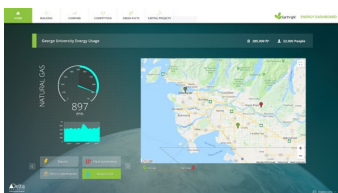
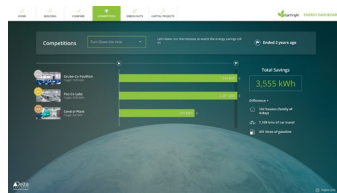
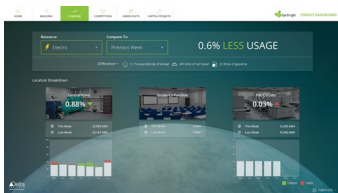
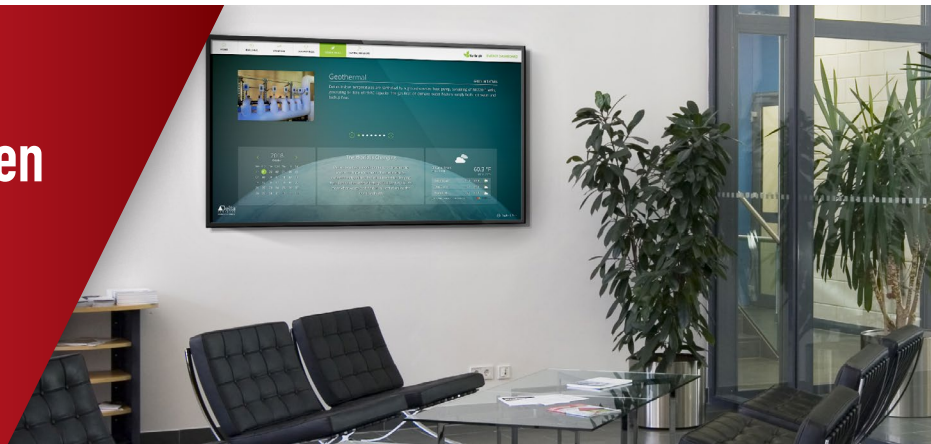


Earthright Dashboard

Educate. Evaluate. Earthright.

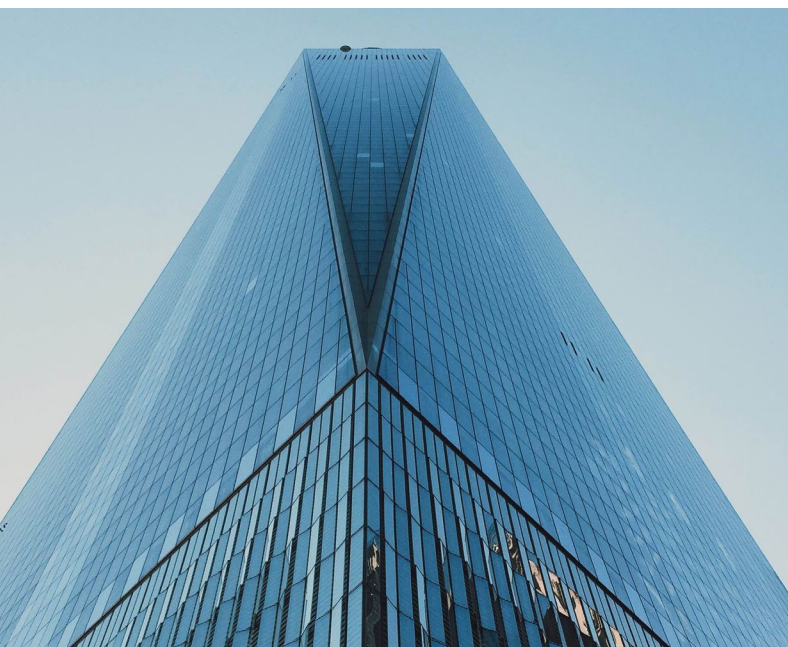
Be proud of your building's efficiency. Use the Earthright Energy Dashboard to communicate your real-time and year-to-year energy conservation results with your occupants. Get people involved with your energy conservation efforts using an interactive dashboard in your building's lobby or other public areas. Promote conservation, gain LEED points, and make your impact known.

Show off your building's green initiatives while actively conserving energy.



Key Features

- Single Installation
- Multiple Viewing Platforms
- Interactive kiosks
- Lobby displays
- Web browsers
- Custom Setup



Facility Scheduler

Schedule Spaces. Control Costs.

Integrate your smart building systems into a central, easy-to-use platform. Facility Scheduler integrates third-party scheduling, booking systems and tenant portals with enteliWEB. Worried about the process changes that accompany a new system? Facility Scheduler lets you preserve your existing workflow while gaining all the benefits of a fully-integrated Delta Building.

Integrate multiple systems and improve your daily workflow effortlessly.



Key Features

Tie Building Automation to Occupancy

The Facility Scheduler allows you to sync HVAC, access, and lighting to occupancy.

Create Savings in Your Building

Save money by leveraging on-demand control. Give your smart building more intelligence by telling it when spaces aren't occupied.

Advanced Scheduling

Take advantage of the built-in calendar for more scheduling options.

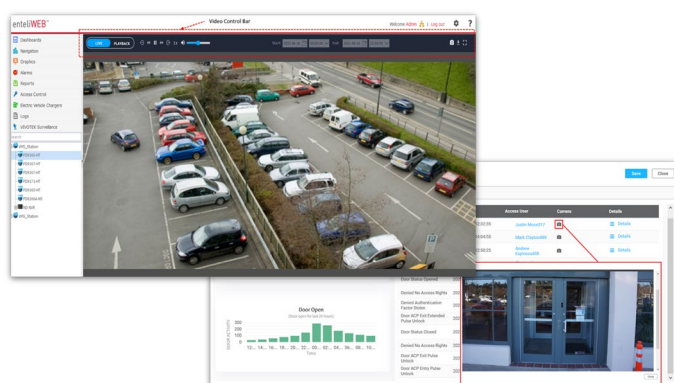
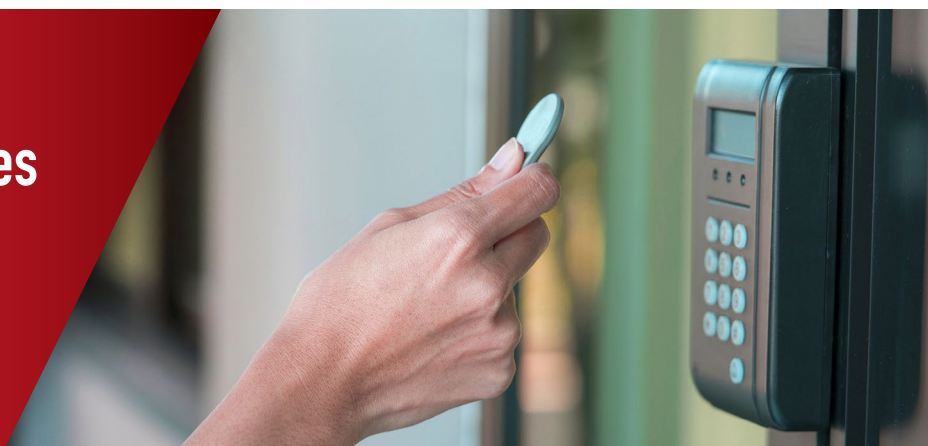


Red5 Access System

Compact. Modular.

When the Red5 Access Module is added to a Red5 system, Delta Controls' building automation system is extended by integrating seamlessly with Delta Controls HVAC, Lighting and Energy Management applications. This provides total control of your facility environment, from controlled access of areas, temperature, lighting and energy monitoring, everything is under control. Our access control system offers flexible and scalable solutions to fit any security need.

Keep an eye on your premises in real-time, enhancing situation awareness.



Key Features

Native interoperability with building automation management tools and system hardware.

BACnet Secure Connect ensures secure and reliable communication between devices.

Modular solution provides flexible and scalable system architectures.

Video management system integration provides greater awareness for system operators.

Support for multiple authentication methods, including biometric and mobile credentials.

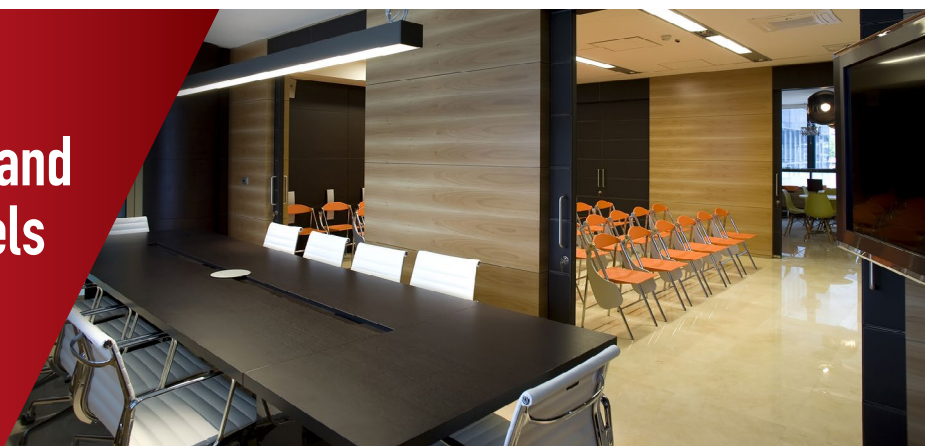


Red5 DALI Module

DALI Integration

Adding to the versatility of our Red5 Room Controller, the Red5 DALI module allows your system to integrate with the DALI devices in your space. Increase your flexibility and decrease your system's complexity with full integration at all levels of your networked lighting control system. Expandable, dimming and Correlated Color Temperature.

Integrate with DALI devices and increase flexibility at all levels of your network.



Key Features

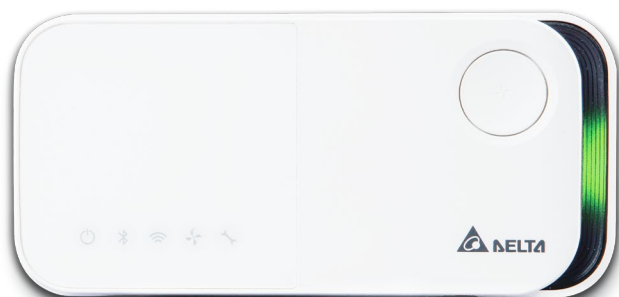
Seamless Integration

The Red5 DALI module provides seamless integration between your DALI devices and your BACNet system.

Versatile Lighting System

With access to DALI, you're provided with a versatile lighting system integrated directly into your BACnet system.

Delta Controls offers an array of DALI light switches and accessories.



UNO IAQ Monitors

Connected. Smart. Healthy.

UNO Indoor Air Quality (IAQ) Monitors provide real-time information on harmful indoor air factors. The detection range, depending on the model, includes Carbon Monoxide [CO], Carbon Dioxide [CO₂], Total Volatile Organic Compounds (TVOC), Fine Suspended Particulate Matter (PM_{2.5}), Suspended Particulate Matter (PM₁₀), Formaldehyde (HCHO), and Ozone [O₃].

According to researchers, during 90% of the time we spend indoors, the unhealthy air factors such as volatile organic compounds, suspended particulates, mold, enter our trachea and lungs invisibly, increasing our risk of respiratory diseases and reducing our immunity.

Application fields cover office, education, public places, healthcare, and residential buildings.



**Protect your health and wellness.
Start with indoor air quality.**



Key Features

- Real-time monitoring of Indoor Air Quality.
- RESET certified.
- Tested for compliance with Delta Controls system.
- Models with BACnet, WiFi, Modbus communication.
- Units with LED indication of IAQ status, with and without display.



enteliVIEW

enteliWEB at Your Fingertips

enteliVIEW-10 is a modern 10.1" touch screen that can present interactive multimedia content. It is a web panel that acts like a web browser that smoothly displays enteliWEB with enteliVIZ graphics. This reliable capacitive touch screen enables easy visualization and control of the building automation system in offices, conference rooms, lobbies, or technical rooms. Integrated LED panels on the sides of the housing allow status indication in red or green. Built-in buzzer enables sound alarms.

Smoothly display enteliWEB on a 10" touch screen with LED panels for status indication and built-in buzzer for sound alarms.



Key Features

CNC aluminum housing.

Browser operation in full screen modeFull screen mode browser and define a start page.

LED panels in housing, build-in buzzer.

Possibility of power supply via PoE or 12VDC (with recommended DRC-12V60W1AZ).



enteli**PREM**

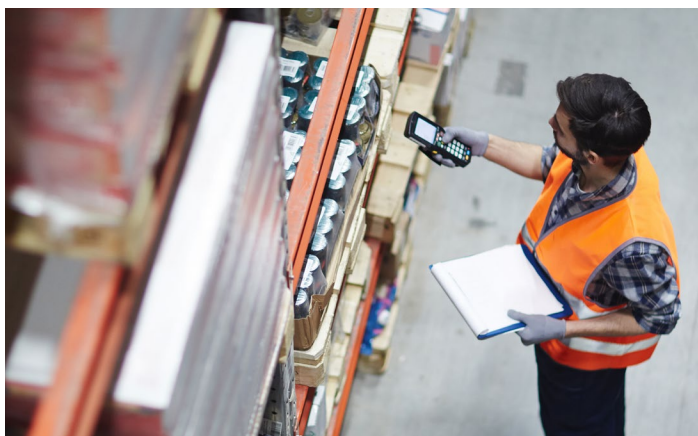
enteliWEB in a Box

enteliPREM500 is an on-premises compact solution for small sites that consists of enteliWEB installed with eW500 license for up to 500 I/O points and eW500-EV enteliVIZ add-on software included on an industrial PC with Windows 10 IoT Enterprise.

This solution aims to drastically reduce the setup time, knowledge required, and installation costs for small-to-medium-sized projects.

If archiving is required, enteliPREM500+ with additional enteliVAULT add-on software is also available for purchase. This is a true plug & play product!

**Deploy enteliWEB rapidly
on-premise in small sites for
up to 500 I/O points.**



Key Features

Workflow improvements with pre-installed and licensed enteliWEB to decrease project engineering time and cost.

Mounting flexibility with a compact form factor + included DIN rail kit, IP50, UL Listed.

Pre-qualified Delta Controls software compatibility stack tuned to system specifications defined in enteliWEB deployment guide.

Compatible and tested to work with enteliVIEW, our touch panel with web client.



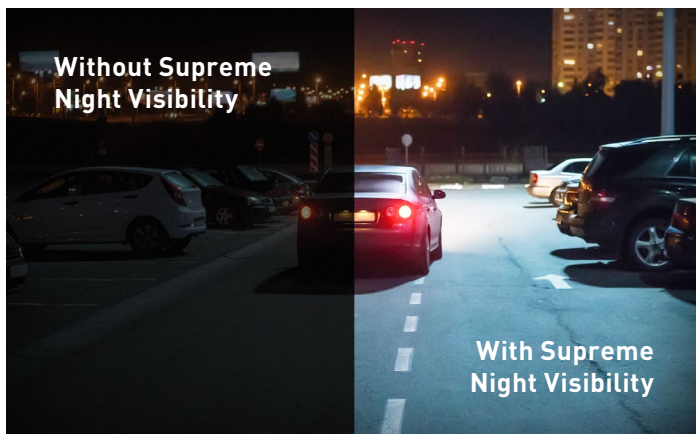
Network Cameras

High Quality, Supreme Night Visibility.

VIVOTEK's outstanding network cameras feature a range of megapixel resolutions, camera dimensions, advanced technologies and value-added video analytic functions in order to satisfy the needs of a diverse range of applications.

The VIVOTEK security cameras also offer people counting integrated directly to an Red5 Room Controller.

The ideal solution for indoor surveillance needs.



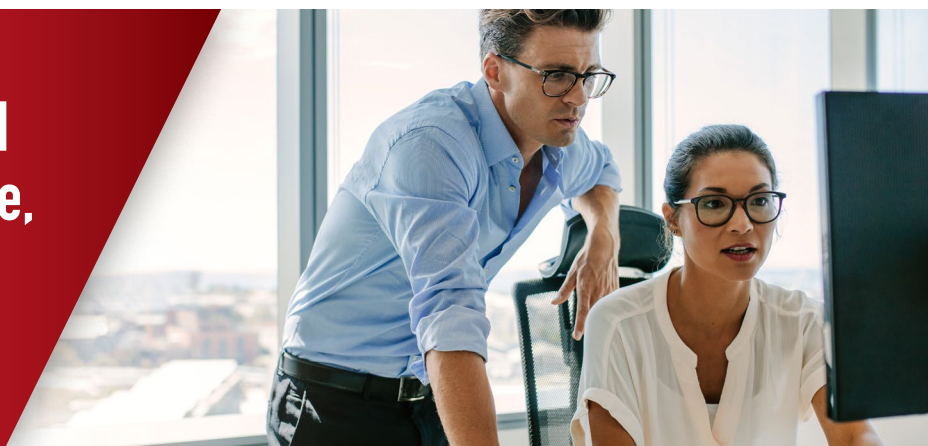
Key features:

- State-of-the-art, scalable camera solutions.
- Broad line of IP cameras.
- License plate recognition.
- Facial recognition.
- TAA-Compliant products.

Integration. Analysis. Control & Visualization.

The JACE 9000 is a compact, embedded IoT (Internet of Things) controller and server platform for connecting multiple and diverse devices and sub-systems. With Internet connectivity and Webserving capabilities, the JACE 9000 controller provides integrated control, supervision, data logging, alarming, scheduling and network management.

Seamlessly integrate IoT and legacy protocols into a single, modern Niagara or BACnet building automation system.



Key Features

Integration - Wide range of supported protocols, both modern and legacy. Used a gateway appliance, the JACE-9000 can bring older legacy devices into a modern BACnet or Niagara system enabling phased upgrades of legacy systems. With embedded web server UI, supervisory control, scheduling, alarming and trending the JACE-9000 can act as a complete small system embedded front end.

Scalable - Easily add additional JACE's and/or a Niagara Supervisor as system size grows.

EQUIP Portfolio

Delta Controls Vendor Partnership

Delta Controls is pleased to announce that we've expanded our list of field devices available through our ordering system. Make sure to check out the expanded offering of products available on online orders.



Visit Online Orders, the source for Delta Controls products and peripherals, redesigned to serve you better.



Delta Controls Certifications



21 CFR Part 11

enteliWEB integrates features that include electronic signatures, user and group-based permissions, secure user authentication with LDAP intuitive, detailed user log reporting, and scheduled system backups. All these features come together to provide compliance with 21 CFR Part 11.

enteliWEB's intuitive workflows make it the ideal building management tool for pharmaceutical manufacturers, biotech companies and medical equipment manufacturers. We make it simple to comply with the regulations that help make critical product manufacture consistent and safe.

UL 864

Delta Controls offers a wide selection of products with UL 864 certification. No two systems are alike and we believe that you should be able to economically engineer any system using the right products. When it comes to fire, smoke and safety no corners can be cut. Because of this, all products with the UL 864 certification are designed from the ground up to meet or exceed the certification standards. Our enteliWEB Operator Work Station (OWS) is also UL 864 certified to ensure that you can maintain safety while conveniently managing the rest of your building without extra training for staff.



Data and Cybersecurity

Delta Controls has always focused our efforts on providing solutions that are innovative, responsive, and easy to implement, and our cybersecurity program is no different. Through industry standards such as OWASP, ISO, and NIST, Delta Controls has the policies, processes and testing in place to ensure we are delivering secure products. Delta Controls is one of the first manufacturers in the industry to implement BACnet Secure Connect to encrypt and authenticate critical data within the system.

We are dedicated to ensuring that building networks remain protected through IT integration best practices, constant product appraisal and timely security updates.