

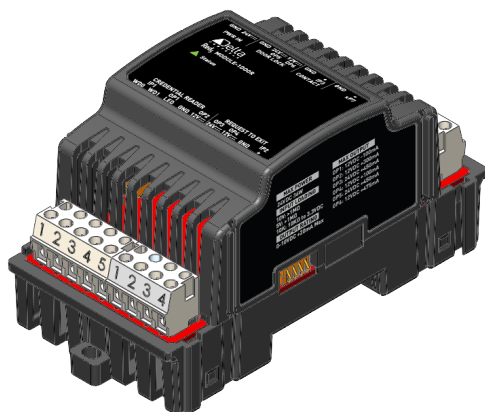
Red5 Series

Red5-MODULE-1DOOR: Access Module

Description

An integral part of Delta Controls' V4 access control system, the Red5-MODULE-1DOOR works with Red5-PLUS-ROOM and Red5-EDGE-ROOM controllers to provide remote, fully programmable access control over BACnet.

The access module also provides expanded I/O capabilities, supporting a combination of universal and door-specific points.



Application

The Red5 system is a complete solution that combines HVAC, access control, and lighting control in a modular system, with multiple protocols and I/O points in one unit.

Features

- ▶ One Red5-MODULE-1DOOR controls and provides input/output points for one door and one credential reader
- ▶ Fully programmable
- ▶ Configurable Wiegand credential format up to 200 bits. Multiple formats supported at the same time.
- ▶ Door contact and request-to-exit inputs can be monitored to give status of the input wiring using end of line (EOL) circuits (Types 0, 1, 2, 3 4)
- ▶ V4 access system supports up to 100,000 local credentials and 10,000 buffered events

Specifications

Inputs

1 Wiegand input for credential reader data (reader, keypad, biometric device, etc.)

1 input for request-to-exit switch

1 input for door contact

Outputs

1 LED open collector for credential reader
12 VDC, -25 mA max

1 binary outputs for credential reader power
12 VDC, 300 mA

2 binary outputs for powering request-to-exit or door accessories
1 24 VDC, 450 mA
1 12 VDC, 100 mA

2 binary outputs for door lock or door accessories
1 24 VDC, 450 mA
1 12 VDC, 475 mA

Universal Point (Input or Output)

1 input (16-bit), supporting:
0-5 VDC
0-10 VDC
10 k Ω thermistor
Dry contact (using 10 k Ω thermistor software setting)
4-20 mA (using external 250 Ω resistor on 0-5 V setting)

1 output (12-bit), supporting:
0-10 V @ 20 mA max

Connectors

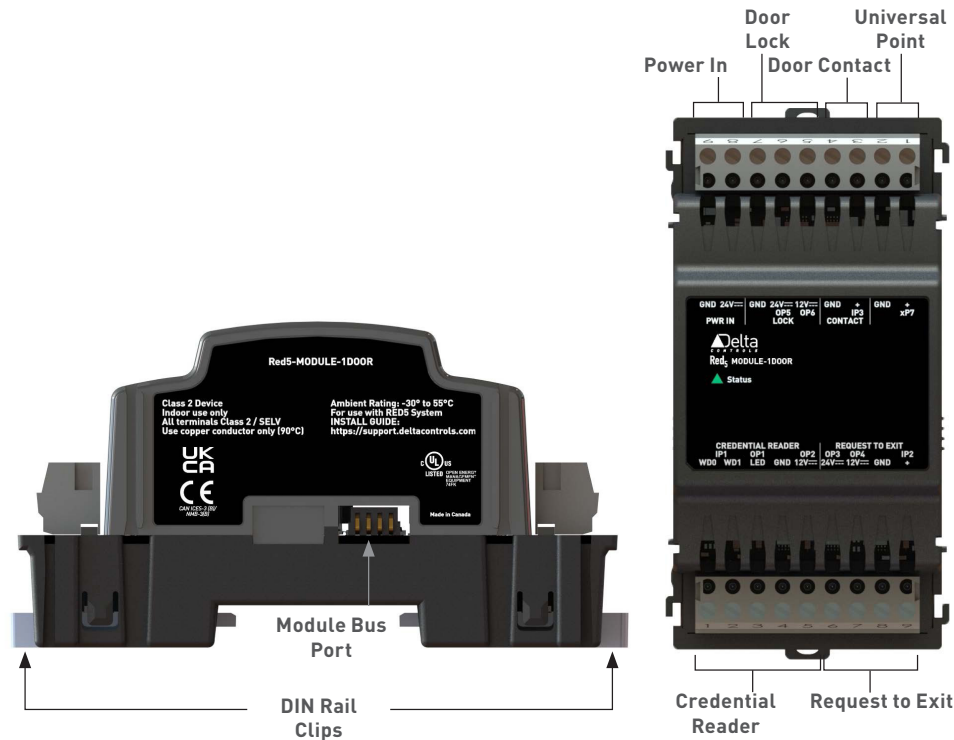
Removable screw-type terminal connectors

Wiring Class

Class 2 / SELV

Red5 Series

Red5-MODULE-1DOOR: Access Module



Specifications (Continued)

Power

24 VDC, 1.5 A (36 W max)

Ambient

-30°C to 55°C (-22°F to 131°F)
10% to 95% RH (non-condensing)

Dimensions

57 × 107 × 58 mm (2.2 × 4.2 × 2.3 in.)

Weight

102 g (0.22 lb)

Compliance

CE
FCC

Listings

C-UL Listed
UL 916 Listed

Updated December 2023

Order a Red5 room controller with one or more modules:

Base Unit

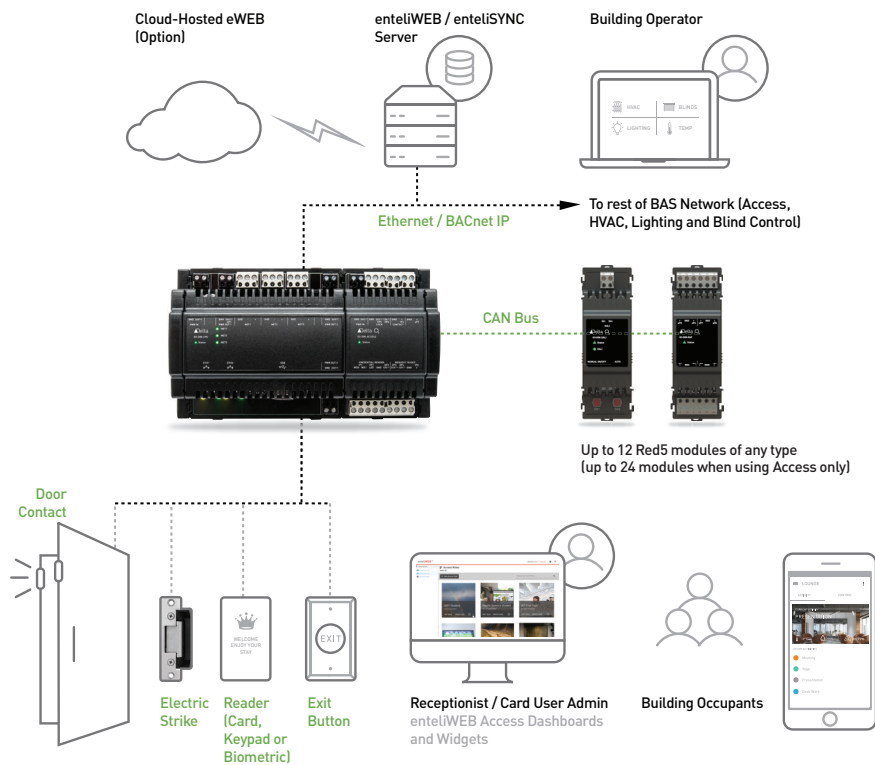
Red5-PLUS-ROOM	Base unit: 3 network ports, 2 Ethernet ports, 3 power outputs, Modbus RTU
Red5-EDGE-ROOM	Base unit: 2 network ports, 2 Ethernet ports, 1 power output, Modbus RTU

Power Supplies

DRC-24V60W1AZ	Chrome Line Voltage DC power supply 24 V 60 W Class A EMC
DRC-24V100W1AZ	Chrome Line Voltage DC power supply 24 V 100 W Class A EMC
DRS-24V50W1NZ	Sync Line Voltage DC power supply 24 V 50 W Class B EMC
DRS-24V100W1NZ	Sync Line Voltage DC power supply 24 V 100 W Class B EMC
DRU-24V10ACZ	24 VDC to 24 VDC 10 A DIN mount UPS. Requires 24 VDC power and SLA batteries 3.3aH to 12aH (not included). Battery status, DC power, and discharging monitor included.

Red5

Red5-MODULE-1DOOR: Access Module



Order the enteliWEB add-on appropriate for your access system:

enteliWEB Add-On

ACC50	Access Dashboard license up to 50 doors
ACC250	Access Dashboard license up to 250 doors
ACC500	Access Dashboard license up to 500 doors
ACC1000	Access Dashboard license up to 1000 doors
ACCUnLtd	Access Dashboard license with unlimited doors

Subject to change without notice.