



Software: Enterprise Facility and Energy Management

Description

enteliWEB is a web-based application that connects all your facilities and centralizes building management operations, site engineering, and energy analytics.

View your building your way by creating your own personal dashboards. Whether you are an executive, an energy manager, or a building operator, the user experience in enteliWEB can be tailored to meet your exact needs.

- ▶ **Energy Analytics** inside of enteliWEB enables you to turn the existing data and sensors inside your building into virtual meters and manage energy consumption down to the zone and equipment level. This software-based approach gives you a complete level of knowledge at a fraction of the cost of installing sub-meters.
- ▶ **Engineering Tools** in enteliWEB allow you to create, edit, and save objects, modify system graphics, and back up databases from a single modern-looking front end.
- ▶ **Centralize Facility Management** and make it easy to integrate scheduling, alarm management, and operations. Connect to all of your buildings under a single login without having to network everything together. Track all building automation system (BAS) changes by service personnel, partner technicians, and facility managers in enteliWEB.

Specifications

BACnet Device Profile

Advanced Operator Workstation (B-AWS)
Secure Connect Hub (B-SCHUB)

Server Operating System

Microsoft Windows Server 2016
Microsoft Windows Server 2019
Microsoft Windows Server 2022
Microsoft Windows Server 2025
Microsoft Windows 10
Microsoft Windows 11

Server Virtualization

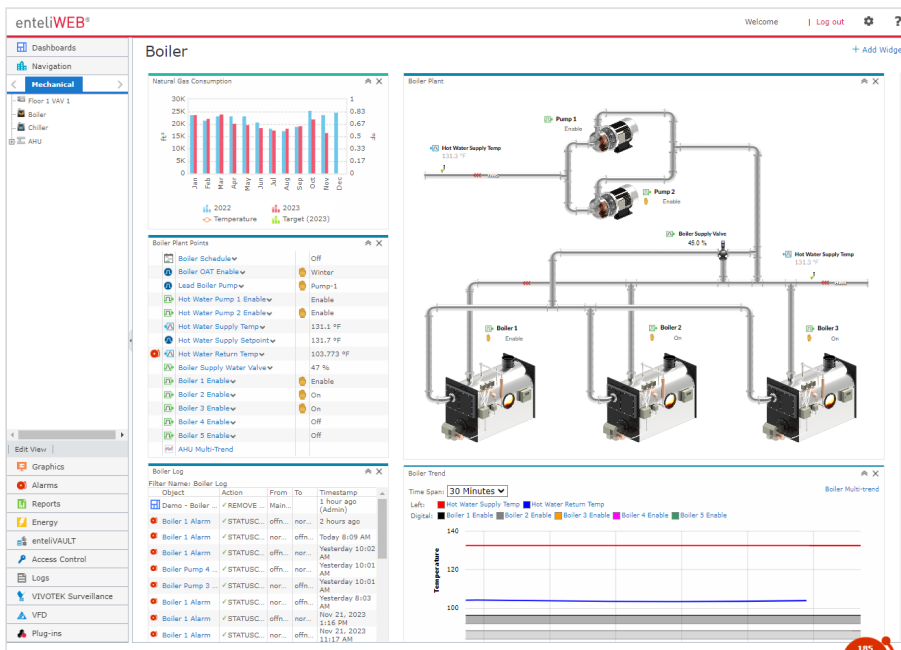
VMware vCenter Server
Microsoft Hyper-V
Microsoft Azure
Amazon EC2
Rackspace Cloud Server

Client Operating System

Microsoft Windows Server 2016
Microsoft Windows Server 2019
Microsoft Windows Server 2022
Microsoft Windows Server 2025
Microsoft Windows 10
Enterprise, Pro, Education, IoT
Microsoft Windows 11
Enterprise, Pro, Education, IoT
Apple macOS X v10.4+

Client Browser

Google Chrome 115+
Microsoft Edge 115+
Mozilla Firefox 116+
Apple Safari 15+



enteliWEB®

enteliVAULT® Archiving

enteliVAULT provides powerful, secure data archiving.

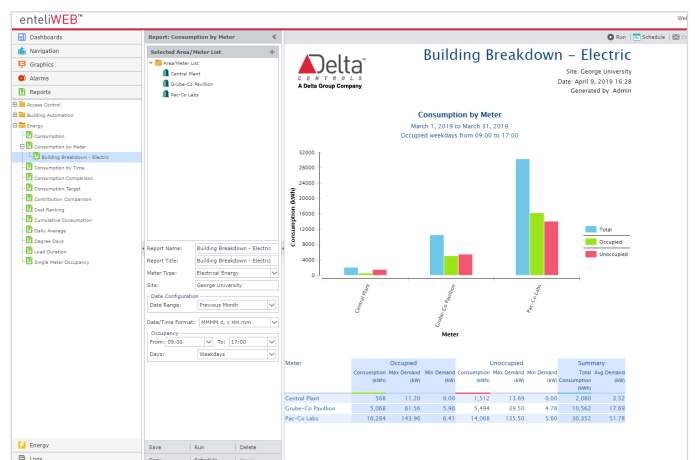
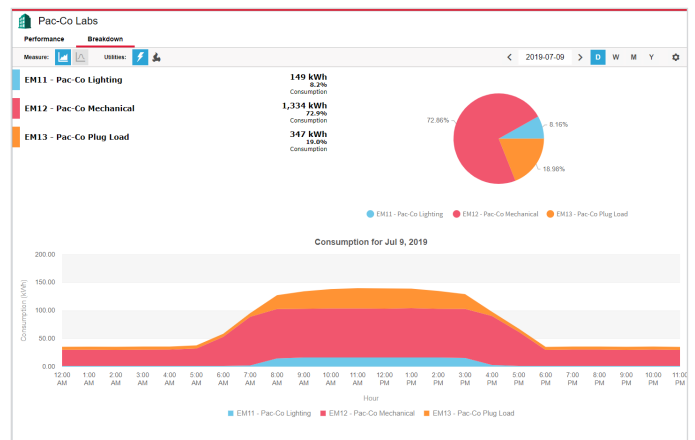
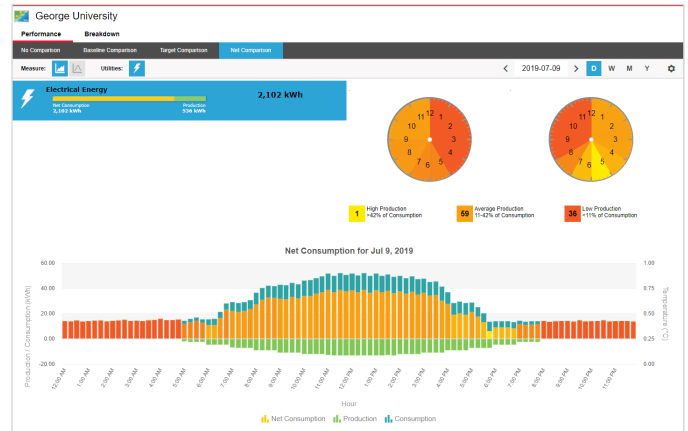
- ▶ **Up to 100,000 Trend Logs Supported.** Allows large amount of data to be stored in a central location that is easy to manage.
- ▶ **Improved Workflows.** Easy to set up and use, with no hardware or software to install, or firewalls to manage. Detects and archives all trend logs on site automatically.
- ▶ **Energy Management Integration.** Shows energy reports and archived meter data when the Energy Management add-on is enabled in enteliWEB.

enteliWEB Energy

enteliWEB Energy is an enterprise energy management package that makes it easy for anyone to understand the energy usage of their building.

Leveraging the rich dashboard interface of enteliWEB, you can view your system's energy usage, set target energy goals, and compare your energy usage against historical baselines.

- ▶ **Local or Cloud Applications.** enteliWEB Energy is the only energy analytics solution that scales from locally installed dashboards and reports to powerful cloud-based analytics.
- ▶ **Virtual Meters.** Find out exactly which building system is consuming too much energy without having to install costly wired meters. Virtual Meters utilize sensors and the data already gathered by the building automation system to track the energy consumption of every piece of equipment in your building, giving you unprecedented visibility into your consumption profile. You can also validate the calculated virtual meters with upstream utility meters.
- ▶ **Tracking Energy Production.** If your site generates power from renewable resources, use the interactive calendar in enteliWEB Energy to locate periods of highest and lowest production, and any net gains from production in a comparison chart.
- ▶ **Intuitive Dashboards.** These interactive dashboards allow you to analyze and breakdown usage to find energy savings. You can also create energy reports, and send and receive them by email.
- ▶ **Alerts and Insights.** Simple alerts to analytics-based Insights warn you in advance of potential consumption overages. Both alerts and Insights are announced in enteliWEB and can also be set up for email notification.

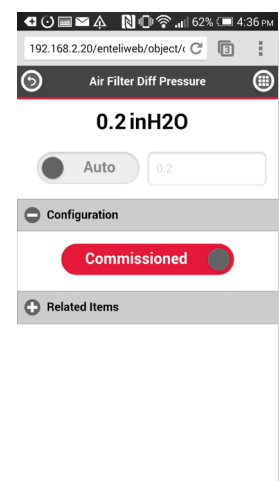
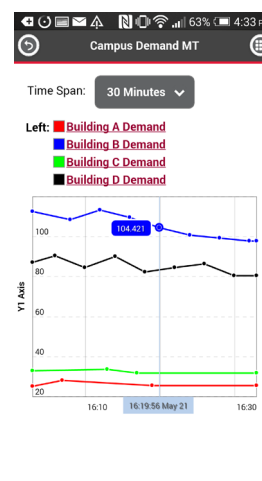
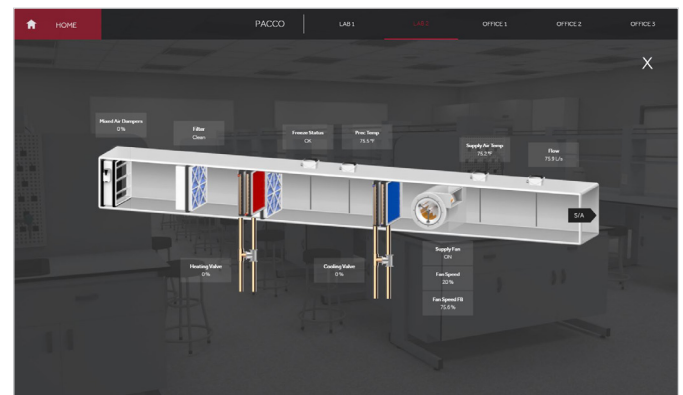
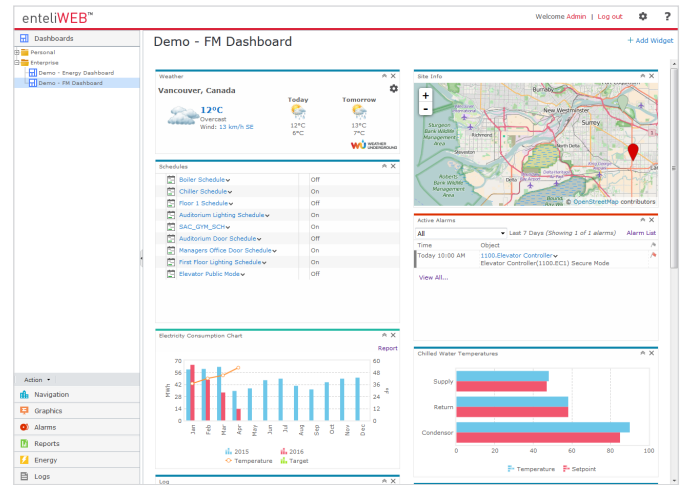


enteliWEB[®]

Visualizing Your Building

enteliWEB makes your data more accessible by presenting information in a visually attractive and user-friendly way.

- ▶ **Enterprise Dashboards.** Provide high level information in simple graphical formats to help manage the facility's key performance indicators (KPIs).
- ▶ **Personal Dashboards.** Personal dashboards are an experience you create yourself. By mixing and matching widgets, each user gets their own personalized dashboard to keep an eye on things that matter.
- ▶ **System Dashboards.** Make operating a facility easy by aggregating system graphics, alarm management, energy information, and more into a single dashboard screen.
- ▶ **Navigator.** Automatically scans the BACnet network and presents devices in a logically arranged network tree. BACnet objects can be monitored and commanded directly from Navigator, or opened from Navigator to change the configuration details.
- ▶ **enteliVIZ™ Graphics.** Create HTML5-based intelligent visualizations and equipment graphics in your web browser. Use them in dashboards alongside other widgets, or as full-page standalone graphics.
- ▶ **Mobile Friendly.** Dashboard and object pages are optimized for viewing on your smartphone or tablet. Whether you just want an overview, or you need to override a point, dashboard-driven navigation makes it easy to drill down from high-level views to specific BACnet objects. Finger-friendly buttons and large text mean you don't have to pinch-and-zoom to view content.
- ▶ **Multiple Language Display.** Support your stakeholders in the language that they are most comfortable using. enteliWEB's user interface can be displayed in one of 22 world languages by selecting the language preference in each user account.
- ▶ **Building Automation Reports.** Gather information about your building by querying controllers on the network and displaying them in professional-looking reports. Reports can be converted to multiple file types, such as .pdf and .xls and emailed automatically on a schedule.

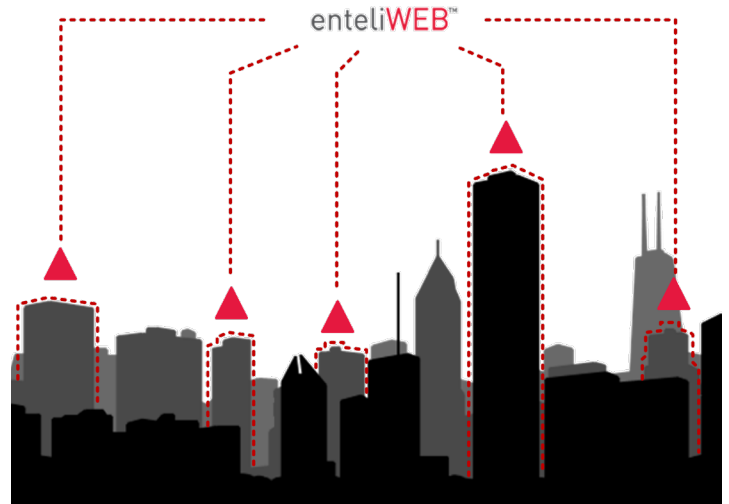


enteliWEB®

Centralizing Facility Management

enteliWEB provides you the tools to manage multiple sites more effectively.

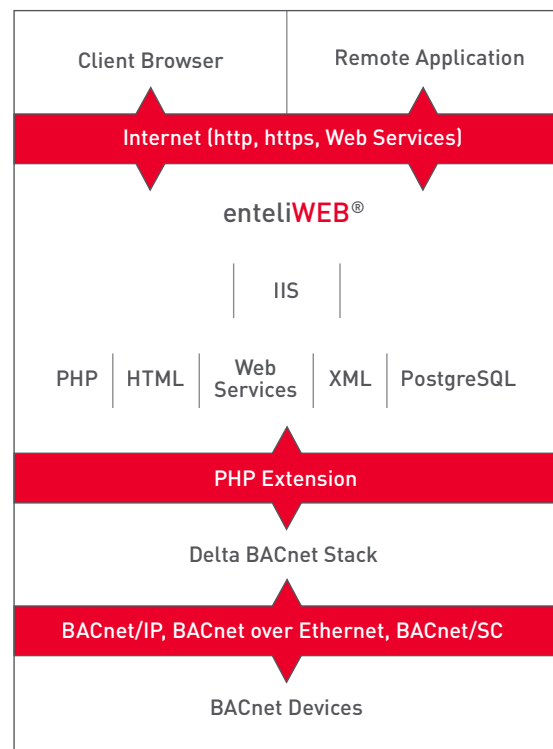
- ▶ **Single Login.** Manage multiple sites using a single login. No need to worry about duplicate addresses or networking everything together. All you need is an IP address for each site.
- ▶ **Retain Supervisory Control** of your entire portfolio of BACnet sites. Leave the other vendor's front end on-site while centralizing your alarm management, scheduling, and energy analytics with enteliWEB.
- ▶ **Version Independent Software.** Allows organizations to operate an entire WAN without having to worry about maintaining different firmware versions in the hardware.
- ▶ **Restore and Backup.** Restore your entire BAS to an earlier state or quickly find a specific backup of a device. Schedule daily, weekly, or monthly backups across devices on multiple sites.



Platform for Innovation

enteliWEB's suite of development tools allow you to create mobile apps, customize user interfaces, and integrate third-party software.

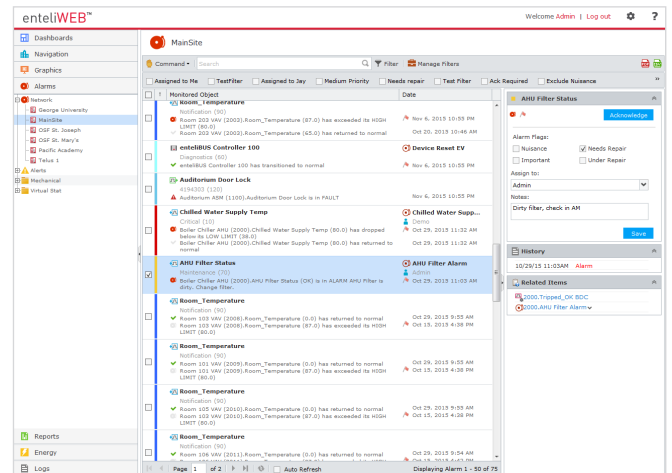
- ▶ **API Documentation Available.** The enteliWEB application programming interface (API) is well-documented, allowing you to easily create custom modules, widgets, and interfaces to third-party software.
- ▶ **BACnet Web Services.** Allow remote applications, such as mobile apps or business systems, to communicate with enteliWEB.
- ▶ **Alarm Module.** The alarm module allows alerts and alarms from non-BACnet systems to be annunciated and managed within enteliWEB.
- ▶ **Open Source Reporting Package.** Design custom reports in enteliWEB using an industry-standard open source report package.
- ▶ **ODBC Driver.** Integrate the building automation system with business-level software.



Alarms

enteliWEB has a robust alarm management system that provides a detailed look at the issues and problems that come up on your sites.

- ▶ **Comprehensive Alarm Management.** Includes intelligent visualizations, alarm assignments, and operator comments on one screen. Powerful filtering, emailing, and prioritization make enteliWEB alarm management effective on even the largest sites.
- ▶ **Alarm Widgets.** Can be added to any dashboard for a quick summary of specific data types. The Site Info widget uses push pins on a map of your building locations to indicate the number and severity of alarms. The Alarm List widget shows the active alarms for specific equipment and the widget can be added to system dashboards.

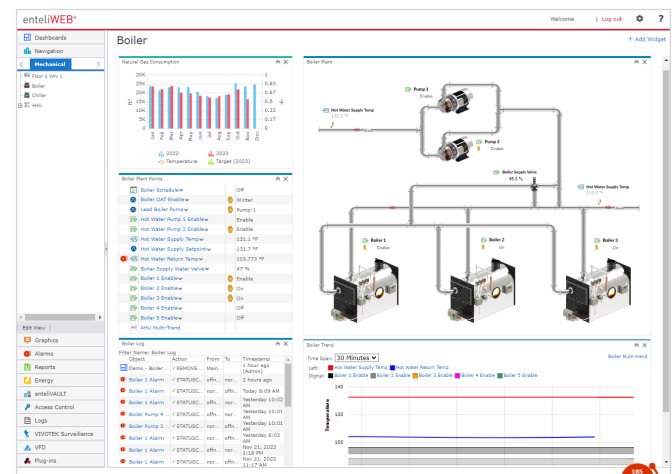


Electronic Signatures

enteliWEB supports electronic record regulations like FDA Code of Regulations Title 21 Part 11 by enforcing electronic signatures on modifications made in these validated environments. Signatures are recorded in the enteliWEB audit log. For more information, see the enteliWEB FDA 21 CFR Part 11 Compliance white paper.

User Permissions

- ▶ **User/Group Permissions.** Permissions give you the ability to assign roles and determine which BACnet objects and visualizations a user can see and interact with.
- ▶ **Active Directory Integration.** Allows user logins to be managed via AD FS, Azure, AWS, Google, and LDAP.
- ▶ **Multilanguage Support.** Gives each user the option to select the language they want to use throughout enteliWEB.



enteliWEB®

Access Control

enteliWEB provides intuitive user-friendly dashboards to allow you to effectively manage your single site or multisite enterprise access control.

The built-in access control dashboards leverage enteliWEB's single-seat management interface so that you can easily enroll, provision, assign and manage access rights.

- ▶ **Custom User Fields.** Quickly enter user information that can include conventional data fields and other site-specific information such as title, department, license plate, etc.
- ▶ **Custom Groups to Provision Users.** Whether your facility has a few or hundreds of access points, enteliWEB uses unique access groups that link access rights, access points and access roles to easily provision users.

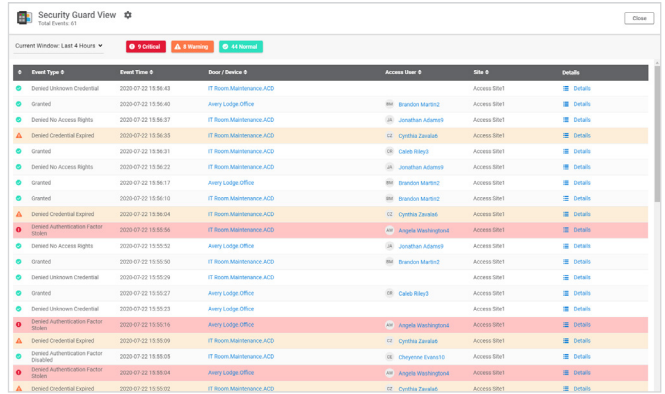
▶ **Real-Time Access to Events and Alarms.** View access events in real-time on the Event Viewer dashboard. Filter the display of events and access alarms by type, level of priority, and time range.

▶ **Flexible Access Reporting.** Generate reports that answer simple to complex questions about your access system, card users, and their activities.

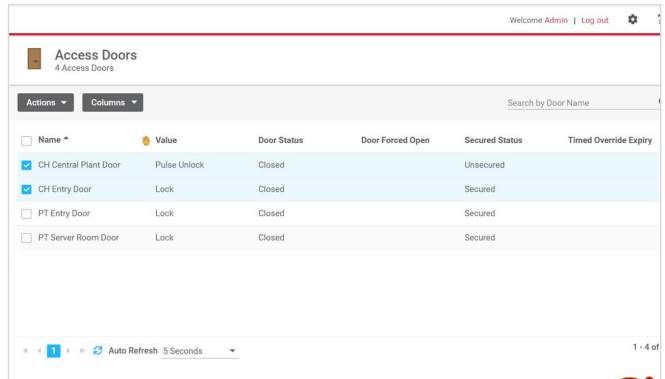
▶ **VIVOTEK and ONVIF Integration.** Add VIVOTEK and ONVIF video surveillance cameras and video management software to enhance your access control system. When linked, you can view live video feeds directly in enteliWEB.

Audit Log

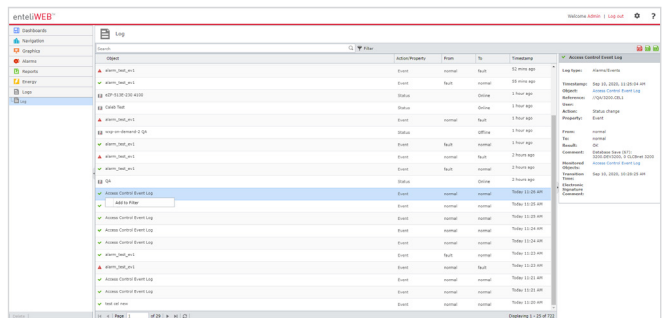
Audit logs provide the ability to track changes made to the system. The powerful filtering and timeline chart make it easy to find the information you're looking for, including manual changes to outputs, alarm history and any other changes made by the system's users.



Event Type	Event Time	Door / Device	Access User	Site	Details
Denied Credential Credential	2020-07-12 15:58:48	IT Room Maintenance ACD	Brandon Marzini	Access Seat	Details
Granted	2020-07-12 15:58:49	Andy Ludge Office	Joseph Adamo	Access Seat	Details
Denied No Access Rights	2020-07-12 15:58:57	IT Room Maintenance ACD	Brandon Marzini	Access Seat	Details
Denied Credential Expired	2020-07-12 15:58:58	IT Room Maintenance ACD	Cynthia Zanetti	Access Seat	Details
Granted	2020-07-12 15:58:59	IT Room Maintenance ACD	Joseph Adamo	Access Seat	Details
Denied No Access Rights	2020-07-12 15:59:23	IT Room Maintenance ACD	Brandon Marzini	Access Seat	Details
Granted	2020-07-12 15:59:17	Andy Ludge Office	Brandon Marzini	Access Seat	Details
Granted	2020-07-12 15:59:10	IT Room Maintenance ACD	Brandon Marzini	Access Seat	Details
Denied Credential Expired	2020-07-12 15:59:04	IT Room Maintenance ACD	Cynthia Zanetti	Access Seat	Details
Denied Authentication Factor Missing	2020-07-12 15:55:54	Andy Ludge Office	Angela Washington	Access Seat	Details
Denied No Access Rights	2020-07-12 15:55:52	Andy Ludge Office	Joseph Adamo	Access Seat	Details
Granted	2020-07-12 15:55:50	IT Room Maintenance ACD	Brandon Marzini	Access Seat	Details
Denied Unknown Credential	2020-07-12 15:55:09	IT Room Maintenance ACD	Brandon Marzini	Access Seat	Details
Granted	2020-07-12 15:55:27	Andy Ludge Office	Andy Ludge	Access Seat	Details
Denied Unknown Credential	2020-07-12 15:55:23	Andy Ludge Office	Andy Ludge	Access Seat	Details
Denied Authentication Factor Missing	2020-07-12 15:55:16	Andy Ludge Office	Angela Washington	Access Seat	Details
Denied Credential Expired	2020-07-12 15:55:09	IT Room Maintenance ACD	Cynthia Zanetti	Access Seat	Details
Denied Authentication Factor Missing	2020-07-12 15:59:09	IT Room Maintenance ACD	Chayenne Escavio	Access Seat	Details
Denied Authentication Factor Missing	2020-07-12 15:59:04	Andy Ludge Office	Angela Washington	Access Seat	Details
Denied Credential Expired	2020-07-12 15:55:02	IT Room Maintenance ACD	Cynthia Zanetti	Access Seat	Details



Name	Value	Door Status	Door Forced Open	Secured Status	Timed Override Expiry
<input checked="" type="checkbox"/> CH Central Plant Door	Pulse Unlock	Closed		Unsecured	
<input checked="" type="checkbox"/> CH Entry Door	Lock	Closed		Secured	
<input type="checkbox"/> PT Entry Door	Lock	Closed		Secured	
<input type="checkbox"/> PT Server Room Door	Lock	Closed		Secured	



Date	Action	User	Time
2020-07-12 15:59:09	Access Control Event Log	Brandon Marzini	15:59:09
2020-07-12 15:59:04	Access Control Event Log	Joseph Adamo	15:59:04
2020-07-12 15:55:54	Access Control Event Log	Angela Washington	15:55:54
2020-07-12 15:55:52	Access Control Event Log	Joseph Adamo	15:55:52
2020-07-12 15:55:50	Access Control Event Log	Brandon Marzini	15:55:50
2020-07-12 15:55:27	Access Control Event Log	Andy Ludge	15:55:27
2020-07-12 15:55:23	Access Control Event Log	Andy Ludge	15:55:23
2020-07-12 15:59:09	Access Control Event Log	Chayenne Escavio	15:59:09
2020-07-12 15:59:04	Access Control Event Log	Angela Washington	15:59:04
2020-07-12 15:55:02	Access Control Event Log	Cynthia Zanetti	15:55:02

Software: Enterprise Facility and Energy Management

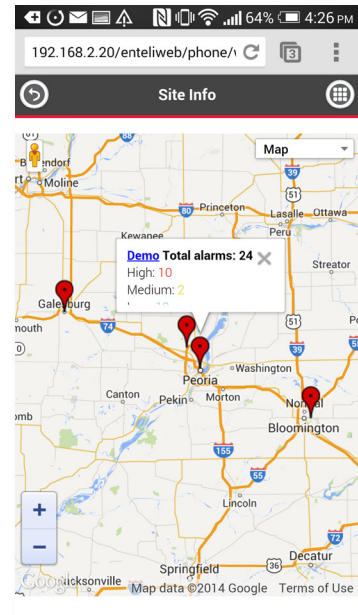
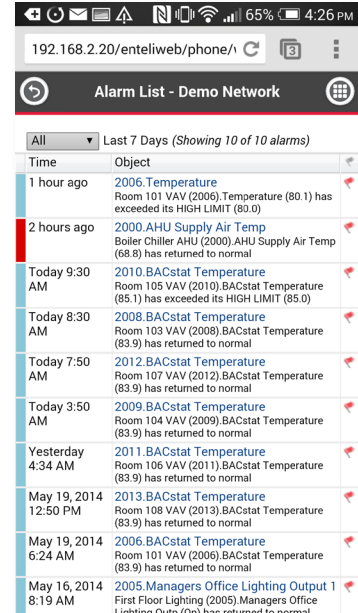
Ordering

enteliWEB is available in 200, 500, 1000, 1500, 2500, and Enterprise editions. All editions and add-ons include 1-year software maintenance subscription.

Edition	Includes	Select One or More Add-Ons
eW200	200 I/O, multiple sites	-EV enteliVIZ graphics -EM Energy management
eW500	500 I/O, multiple sites	-VLT enteliVAULT -VM enteliWEB on an offline virtual machine
eW1000	1000 I/O, multiple sites	-API Web services, mobile app, interface API and ODBC Driver
eW1500	1500 I/O, multiple sites	
eW2500	2500 I/O, multiple sites	
eWEnt	5000 I/O (expandable with add-ons), multiple sites	-EV enteliVIZ graphics -EM Energy management -VLT enteliVAULT -VM enteliWEB on an offline virtual machine -API Web services, mobile app, interface API and ODBC Driver -2500IO 2500 I/O point add-on -25kIO 25000 I/O point add-on -UnLtd Unlimited I/O point add-on

V4 Access Dashboards

Select add-on	ACC50	ACC250	ACC500	ACC1000	ACCUnLtd
	Access Dashboards license up to 50 doors	Access Dashboards license up to 250 doors	Access Dashboards license up to 500 doors	Access Dashboards license up to 1000 doors	Access Dashboards license with unlimited doors



enteliWEB and enteliVAULT are registered trademarks of Delta Intelligent Building Technologies (Canada) Inc. All other trademarks are the property of their respective owners.

Updated January 2025

Subject to change without notice.