

# Product Catalog

Reliable. Open. Integrated. Secure.

## About Delta Intelligent Building Technologies

One of the largest original equipment manufacturers in Canada; Delta Intelligent Building Technologies leads the way in complete building automation solutions.



## System Architecture 04-05

### Systems 06

Red5 Plus	06
Red5 Edge	07
Red5 Field	08
Red5 Secured Facilities (SF)	09
Red5 Modules	10
DAC PoE VAV Controller	11
DVC Delta VAV Controller	12
DVC PoE VAV Controller	13
enteliBUS	14
enteliZONE Fan Coil Controller	15
eZVPE Dual Port Ethernet VAV Controller	16
CON-T1L	17
EDGE VAV	18
FIELD VAV	19
EDGE VAV T1L	20

### Room Control 21

Red5-Plus-Room	21
Red5-Edge-Room	22
Red5-Expand-04	23
O3 Hub	24
O3 Sense	25
O3 Edge	26
Proviso	27
eZV enteliZONE VAV Controller	28
eZNS enteliZONE Network Sensor	29
eZNT enteliZONE Network Thermostat	30
eZNT-Wi	31
CON-ENOC EnOcean Integration	32
Seymour Connect	33
CON-BT-USB	34

## Controller Selection Guide 35-39

### Software 40

enteliWEB	40
enteliCLOUD	41
enteliVAULT	42
enteliSKETCH	43
Cloud Engineering	44
Commissioning Module	45
Data Transfer Module	46
Earthright Dashboard	47
Facility Scheduler	48
DeltaBench 2.0	49

### Access & Lighting Control 50

Red5 Access System	50
Red5 DALI	51
Red5 Access Unit	52
EDGE-LIGHT-RELAY	53

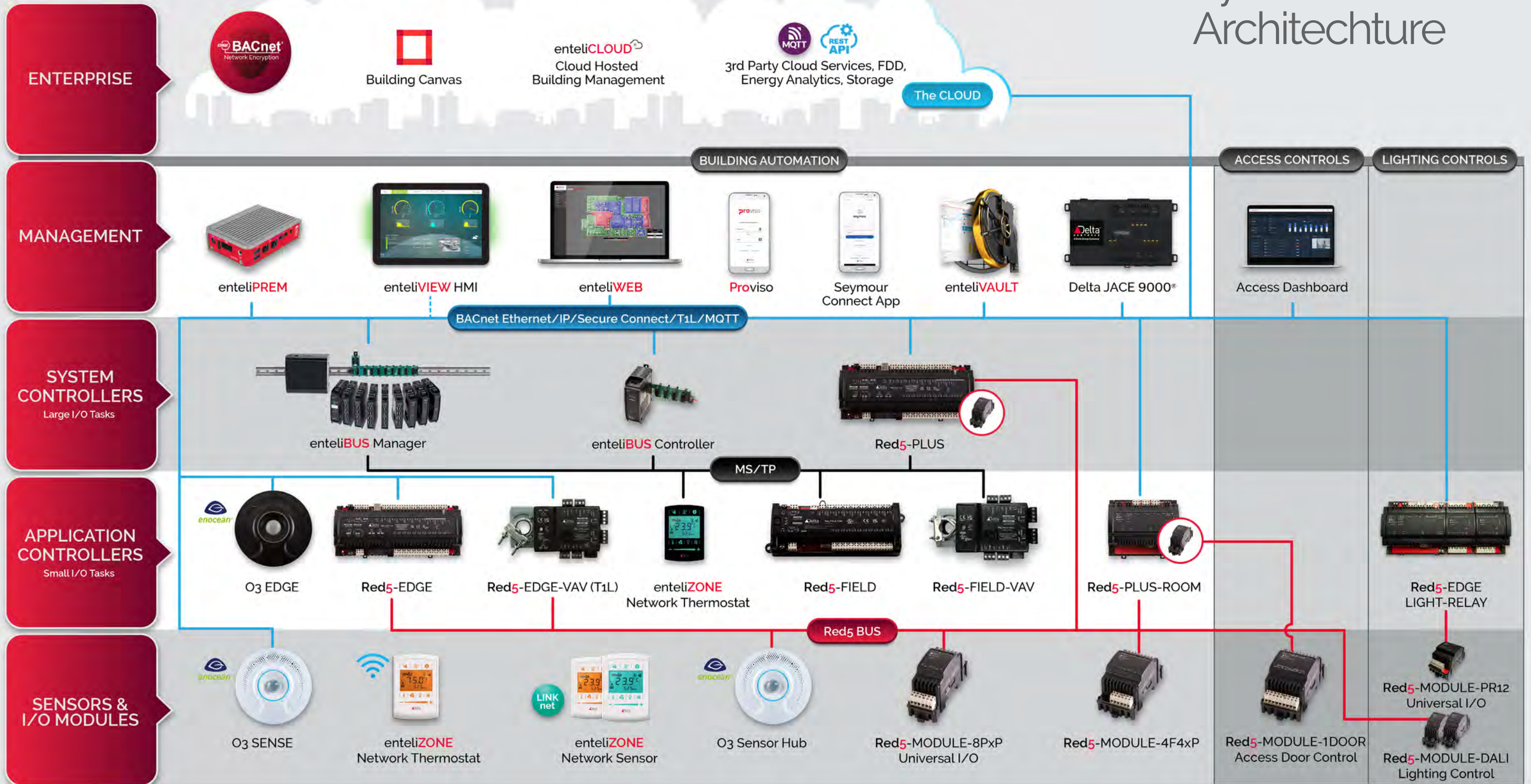
### Equip Room 54

UNO IAQ Monitors	54
enteliVIEW	55
enteliPREM	56
VIVOTEK Network Cameras	57
JACE® 9000	58
EQUIP Portfolio	59

### Delta Intelligent Building Technologies Certifications 60

Certification 21 CFR Part 11	60
Certufucation UL 864	61
Certification Data and Cybersecurity	61
Delta IBT and Customer Services	62
Vertical Market Solutions	63
Do it right	64

# System Architecture

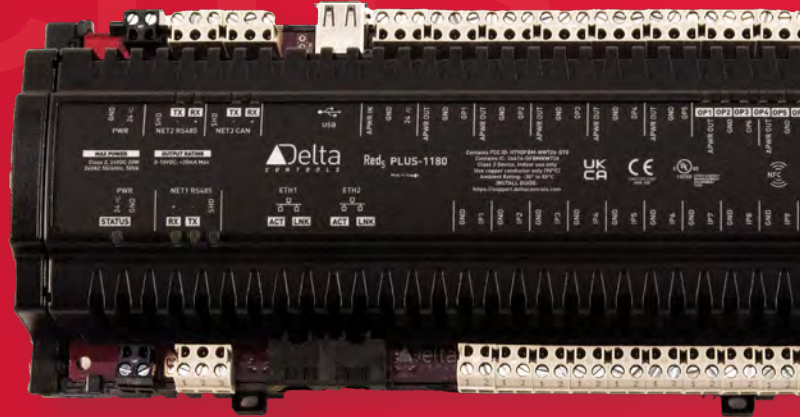


© Delta Controls v18. All rights reserved.

# Red5 PLUS

## Securing The Future of Your Facility

Flexibility, foundation and future embodied in the next generation of Delta Controls DSC Controller: the Red5 PLUS. A modular format offering faster processing and increased memory, these IoT system controllers use traditional area and subnet architecture along with GCL+ Programming.



Unleash the power of your BMS with secure, scalable integration, with expandable I/O, and advanced IoT features.



### Key Features

- + BACnet/SC for Secure Remote Access.

---

- + Interoperable Open Protocols for Integrated Ecosystems.

---

- + Native BACnet advanced IoT Controller with Node Red Support and Loadable Python Modules for maximum system integration and interoperability.

# Red5 EDGE

## The Leading Edge of Building Technology

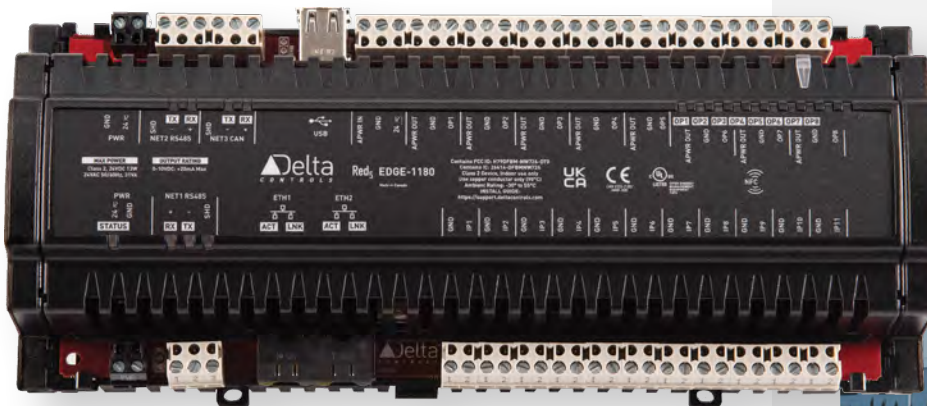
Meet the next generation of Delta Controls native BACnet controllers with secure and scalable IoT connectivity. Red5-EDGE offers faster processing, increased memory, enhanced security and endless possibilities. Red5-EDGE reduces installation costs by saving you time with updated workflows and reduced site visits.

With its open protocol integration, embedded web server, BACnet/SC and expandable I/O, Red5-EDGE is a powerful, fully programmable BACnet building controller that comes in a variety of I/O configurations. It has native support of BACnet Ethernet/IP, MS/TP, MODbus, LINKnet and our new Red5BUS.

### Key Features

- + Native BACnet for System Interoperability.
- + High-speed Ethernet/IP w/Dual Port Daisy chain Topology.
- + Multiple IO footprints incl. Universal Inputs and Expandable Universal I/O.

**Breathe new life into your building with a robust, powerful controller that sets the standards for today's building controls technology.**



# Red5 FIELD



## Flexibility. Foundation. Future.

Meet the next generation of Delta Controls MS/TP Building and Application controllers. Red5-FIELD offers faster processing, increased memory, and the power needed for advanced building control algorithms.

Red5-FIELD replaces the highly successful DAC product line, with an easy, pin-for-pin retrofit controller, increased GCL+ programming space and added USB port for future enhancements. It's a fully programmable, native BACnet MS/TP controller that comes in a variety of capabilities and I/O configurations to fit the needs of every project.

### Key Features

- + Faster Provisioning and enhanced workflow.
- + Native BACnet MS/TP for seamless retrofits and interoperability.
- + Fully Programmable for Application Flexibility.

Give new life to your MS/TP  
Controller Subnetworks.

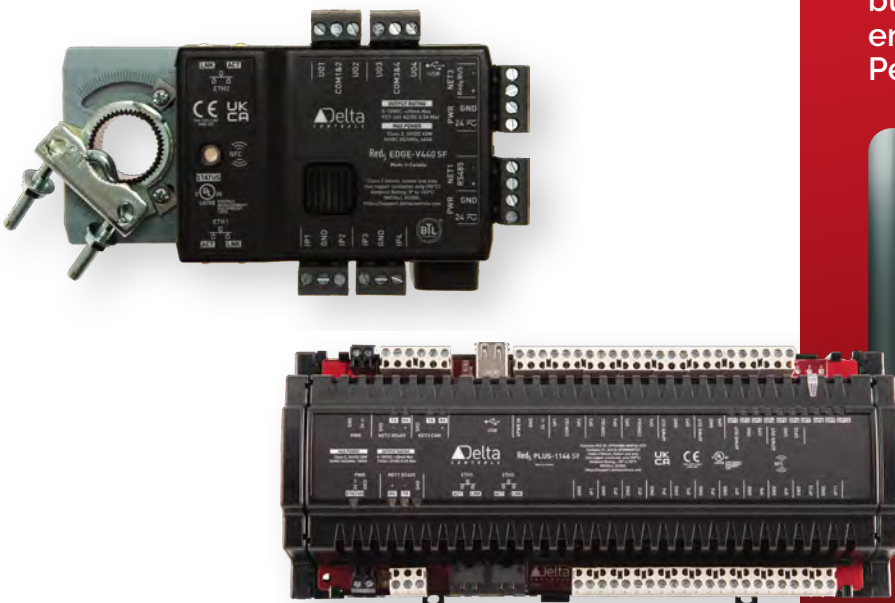


# Red5 Secured Facilities (SF)

## Hardware-Secured BACnet Control for High-Security Environments

Red5 Secured Facilities (SF) extends the power of Delta Controls' Red5 platform into environments where security requirements demand more than software-based protection. Designed for facilities that prohibit wireless communication and require strict network integrity, Red5 SF delivers fully programmable BACnet control with hardware-level security built directly into the device.

By removing all wireless components and bypass functionality at the hardware level, Red5 SF ensures compliance with no-RF and air-gapped policies while maintaining the same performance, flexibility, and scalability as standard Red5 controllers. Fully aligned with Delta's V4 platform, Red5 SF integrates seamlessly into existing systems and workflows without requiring changes to engineering or commissioning practices.



### Key Features

- +
**Hardware-Level Security**  
 All NFC, BLE, and wireless components are physically removed at the PCB level, ensuring compliance with no-radio and secure facility requirements.

---

- +
**No Bypass Network Paths**  
 Ethernet bypass relays are removed to maintain strict control over network communication and eliminate unintended pathways.

---

- +
**Unchanged Performance & Flexibility**  
 Maintains identical I/O capacity, processing power, and modular expandability across PLUS, EDGE, and FIELD controller models.

Experience secure, hardware-level building control for high-security environments with the same Red5 Performance you expect.



# Red5 MODULES

## Total Room Integration

The Red5 Room Controller uses modular, universal I/O to take control of HVAC, access, dimmable and Correlated Color Temperature lighting at the room level. Connect with DALI, EnOcean, and Modbus to take total control of multiple rooms without running sub-networks. Complete room control, overall efficiency.



**Red5-PLUS-ROOM**

A fully programmable native BACnet multi-room controller supporting multiple communication protocols.



**Red5-MODULE-EXPAND 04**

Allows for remote expansion of up to 4 Red5 Modules to the Red5-ROOM and Red5-PLUS/EDGE platforms.



**Red5-MODULE-8xP**

Features 8 software configurable, universal I/O points to provide maximum flexibility for a given application.



**Red5-MODULE-DALI**

The Red5 DALI module allows your system to control the DALI devices in your space.



**Red5-MODULE-SMI**

Provides connectivity between BACnet BAS & SMI motor drives including blinds or other window coverings, installed within the same system.



**Red5-MODULE-4FxP**

Allows flexible I/O designed to control various loads or drive high-current relay coils with universal points.



**Red5-MODULE-PoE**

Adds PoE capability to the Red5-ROOM controller.



**Red5-MODULE-PR12**

Provides a scalable, modular and future-proof lighting control solution.



**Red5-MODULE-1DOOR**

Provides remote, fully programmable, door access control and expanded I/O capabilities.



**CON-T1L**

Plug-and-play converter bringing 10BASE-T1L to a single twisted pair, turning legacy wiring (RS-485, MS/TP) into Ethernet/IP networks.

# DAC PoE



## Delta Controls Application Controllers + Power Over Ethernet

The Delta Controls Application Controller PoE is a powerful, fully programmable BACnet controller featuring Power over Ethernet (PoE). PoE provides high-speed communication and power with a single Ethernet cable.

Eliminating the need for additional wiring, the DAC PoE reduces the complexity of your system by leveraging your existing IT infrastructure.

### Key Features

- +
**Simplify Wiring**  
 Eliminate the costs and complexity associated with additional wiring.

---

- +
**Flexibility**  
 Increase the flexibility of your network by simplifying the process of adding new equipment to your system.



**Leverage your existing IT infrastructure and eliminate costs with the power of a single Ethernet cable.**

# DVC

## Ensuring a Strong, Dependable Facility.

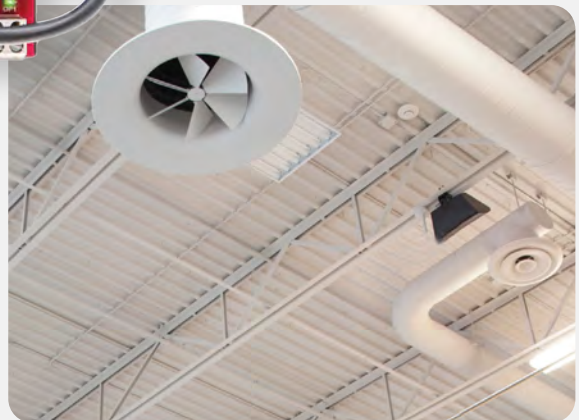
Delta Controls VAV Controllers are the smart choice for any VAV project. With integrated choice of Siemens or Belimo actuators and multiple I/O options, DVCs are the fully programmable solution for any VAV configuration. Use DVC PoE models to simplify your network, reduce wiring costs and get more data from your system.



### Key Features

- + **More Options. More Data.**  
 Using Ethernet or PoE at every level of your network allows you to get more data out of your system. This makes building analytics more powerful and gets you ready for the IoT networks of the future.
- + **Tackle Any VAV**  
 DVCs come with multiple actuator options and I/O configurations. They're fully programmable so you can handle any configuration of VAV.

Delivering reliable occupant comfort with precision.



# DVC PoE

## Power Over Ethernet VAV Controllers

The Delta Controls VAV Controller PoE provides a powerful and economical solution for VAV applications. With Power over Ethernet (PoE), the DVC PoE provides high-speed communication and simplified wiring with a single Ethernet cable.

### Key Features

- Fully Integrated**  
With direct mount housing, the DVC PoE integrates the controller, damper actuator and airflow sensor into a single, easy to install package.
- Power and Speed**  
Improve your analytics by getting fast, reliable data from the lowest level of your network with the DVC PoE.



With a single cable, you'll get high-speed communication and simplified wiring.



# enteliBUS



## Modular. Expandable. Flexible.

The enteliBUS Control System is a powerful, fully programmable BACnet controller that features modular, expandable I/O up to over 300 points. enteliBUS has hot-swappable I/O modules for fast and easy installation. With HAO switches, save your equipment from short cycling and make troubleshooting a breeze. Use enteliBUS as a BACnet router or join multiple network segments.

### Key Features

- + **Hot Swappable**  
 Multiple, configurable modules can be changed out while enteliBUS is powered. Reduce downtime for troubleshooting.

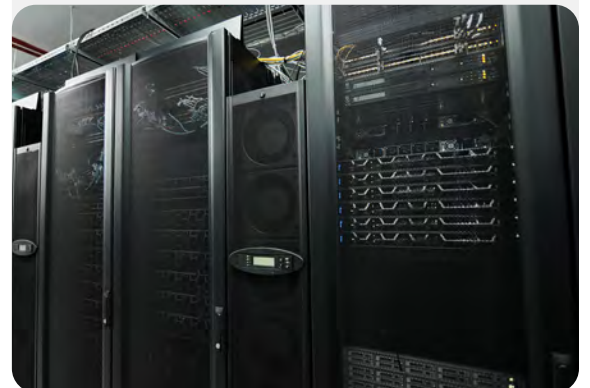
---

- + **HAO Switches**  
 Outputs use manual Hand-Auto-Off switches. You can change from Auto to On or Off without short-cycling equipment.

---

- + **Connectivity & Security**  
 BACnet BBMD and BACnet Secure Connect Routing.

Join multiple network segments while reducing troubleshooting downtime.



# eZV enteliZONE



## Fan Coil Controller

The eZFC-424R4-24 is a native BACnet fan coil and heat pump controller designed to simplify terminal unit control while delivering flexible, application-ready performance.

Optimized for fan coil applications, it combines built-in configurable algorithms, line-voltage fan control, and networked sensor support to enable fast deployment and reliable zone-level operation. Available in both configurable and fully programmable models, the eZFC-424R4-24 supports standard sequences as well as custom zone control strategies when required.

### Key Features

- + **Direct Fan Motor Control**  
 Line-voltage rated relays allow direct switching of fan motor loads, eliminating the need for external relays and reducing panel complexity for fan coil and heat pump applications.
- + **Built-In Fan Coil & Heat Pump Algorithms Integrated**, configurable control algorithms enable quick setup and commissioning for typical fan coil and heat pump sequences, with optional programmability for modifying behavior or creating fully custom zone programs.
- + **Built-In Fan Coil & Heat Pump Algorithms BACnet MS/TP** communication with an RS-485 subLAN supports enteliZONE and BACstat smart sensors, as well as EnOcean wireless devices (via gateway), enabling flexible zone sensing, scheduling, trending, and alarming within a BACnet system.

### Purpose-built fan coil control.



# eZVPE

## Dual Ethernet Ports

With dual Ethernet ports, the eZVPE gives you the power to build network segments without the need for running new Ethernet cable for each controller. By linking multiple eZVPE controllers in your system, you will not only save on installation cost but create an easy to troubleshoot, networked solution.

### Key Features

- + **Flexibility**  
 With multiple actuator options and I/O configurations, the eZVPE can handle any configuration of VAV.

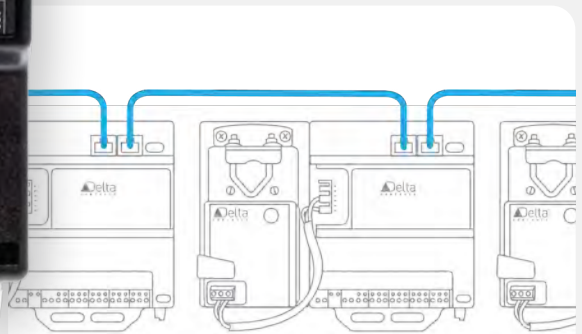
---

- + **Dual Ethernet**  
 Connect a chain of multiple eZVPE controllers using high-speed, dual Ethernet ports.

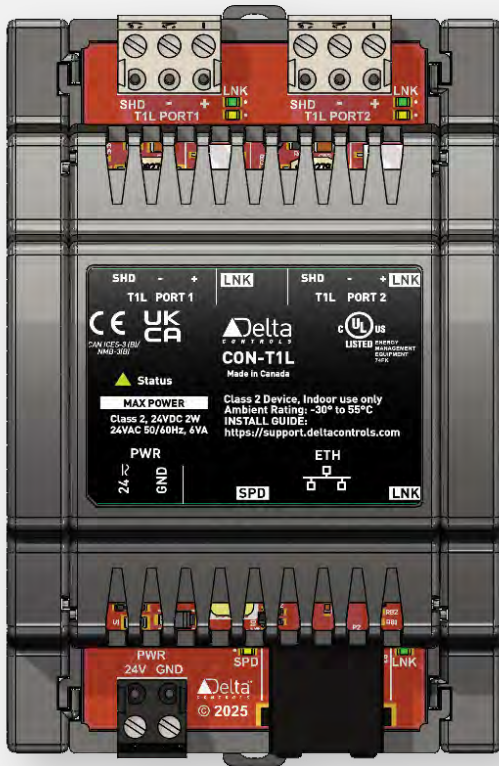
---

- + **Customizable**  
 Programmable option allows modifying algorithms or creating completely custom zone control.

Handle any VAV configuration with simplicity of daisy-chain topology paired with the speed of Ethernet while saving on cost.



# CON-T1L



## Key Features

- + **Future-proof Retrofits**  
 Reuse Legacy Twisted Pair wiring to achieve Ethernet-level speed and reliability—no rip-and-replace required..

---

- + **Fast, Future-Proof Upgrades**  
 Adds IP networking to older wiring layouts, giving buildings a modern BMS without overhauling the entire infrastructure.

---

- + **Plug-and-Play Simplicity**  
 No configuration or addressing required - just connect and go!

---

- + **Designed for Retrofit & Beyond**  
 Perfect for unitary controllers and retrofit scenarios where distance and cable type are limiting factors or simply to bridge the gap between older technology and new controllers.

## A Retrofit Revolution.

The CON-T1L Module is a plug-and-play media converter that unlocks 10BASE-T1L over a single twisted pair, transforming legacy twisted pair wiring (RS-485, MS/TP) into fast, Ethernet/IP-ready networks. Whether in retrofit projects or new installs, it bridges the gap between high performance and existing wiring infrastructure—without disruption or excessive costs.



**Bring Your Building to the Future—  
Without Rewiring It.**

# Red5 EDGE VAV



## Redefining Building Automation

The Red5-EDGE-V440/V100 is a fully integrated, programmable, and IoT based Native BACnet VAV controller. The Red5-EDGE supports a BACnet Ethernet/CyP daisy chain with fail-overbypass technology, delivering a fast, reliable BMS network while providing unparalleled cyber security.

The precision analog actuator control provides improved accuracy at lower air flows that allows finer tuning of the system, generating significant energy savings and lower building controls maintenance costs.

With the Proviso app, facility personnel and other users can adjust network settings allowing them to streamline the connection and configuration process.

### Key Features

- + Selectable, fully functional, editable, built-in Guideline 36 and VAV application databases.
- + Fully integrated within a Belimo Actuator footprint for unparalleled speed and ease of installation.
- + Full daisy chain Ethernet/IP with bypass technology supporting BACnet SC for maximum cybersecurity and network reliability.
- + Full IoT controller with MQTT and onboard Python-based analytics capability.
- + Easily retrofit and refresh your system minimizing CAPEX through backwards compatibility with legacy infrastructure.

Delivering a fast, reliable BMS network while providing unparalleled cyber security.



# Red5 FIELD VAV

## Redefining Building Automation

The Red5-FIELD-V440/V100 is a fully integrated, programmable, and IoT based Native BACnet VAV controller. The Red5-FIELD-V440/V100 communicates over RS-485 using the BACnet MS/TP protocol.

The precision analog actuator control provides improved accuracy at lower air flows that allows finer tuning of the system, generating significant energy savings and lower building controls maintenance costs.

With the Proviso app, facility personnel and other users can adjust network settings allowing them to streamline the connection and configuration process.

**The Red5-FIELD-VAV packs full Red5 performance into an ultra-compact controller built for MS/TP.**

### Key Features

- + Selectable, fully functional, editable, built-in Guideline 36 and VAV application databases.
- + Fully integrated within a Belimo Actuator footprint for unparalleled speed and ease of installation.
- + Supports a RS-485 subLAN of LINKnet smart network sensors and remote I/O expansion modules.
- + Bi-Directional Flow Sensor to automatically provide the correct pressure, ensuring consistent performance without manual recalibration or reinstall of the tubes.
- + Easily retrofit and refresh your system minimizing CAPEX through backwards compatibility with legacy infrastructure.



# Red5

## EDGE VAV T1L



### Key Features

- + **Native BACnet Control**  
 BACnet Building Controller with full GCL+ programmability, allowing flexible application programming and seamless system integration.

---

- + **Precision Airflow Measurement**  
 Includes built-in, editable ASHRAE Guideline 36 sequences to support high-performance, energy-efficient VAV operation.

---

- + **Simplified Commissioning**  
 Zero-drift differential pressure sensing ensures long-term accuracy and reliable airflow control without recalibration.

## Next-Generation VAV Control with Ethernet/IP over single, twisted pair cabling.

The Red5 EDGE VAV T1L is Delta Controls' next-generation VAV controller designed to modernize building systems through high-performance IP connectivity over existing wiring. Built on 10BASE-T1L single-pair Ethernet, it delivers IP-level communication while eliminating the need for costly network upgrades.

Purpose-built for retrofit and new construction applications, the Red5 EDGE VAV T1L integrates control, airflow measurement, and actuation into a single compact device. With native BACnet support, built-in Guideline 36 sequences, and flexible expansion options, it provides a future-ready platform for high-performance airside control.



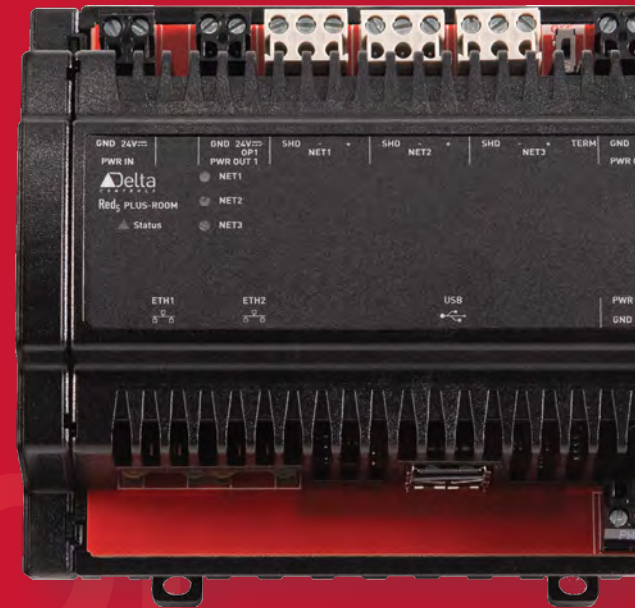
**Modern networking. Existing Infrastructure. Simplified installation. Designed for the next generation of VAV systems.**

# Red5 PLUS ROOM

## Total Room Integration

The Red5 Room Controller is DIN rail mountable and combines modular I/O with room-level integration.

Red5 is a complete solution that combines HVAC, access and lighting control in a modular system. It combines multiple protocols and I/O points in one unit.



Control multiple rooms. Integrate with multiple systems.

### Key Features

- + Universal I/O**  
No more inputs and outputs. Use universal points to control or read from field equipment. Reduce engineering and product costs by being able to use every point on the board.

---

- + Excels at Controlling Multiple Rooms**  
Control HVAC, access and lighting with just one system.

# Red5 EDGE ROOM

## Total Room Integration

A fully programmable native BACnet building controller, Red5-EDGE-ROOM supports multiple communication methods, including BACnet/IP, BACnet over Ethernet, BACnet MS/TP, and Delta LINKnet.



### Key Features

- + Availability**  
Program or work on graphics from anywhere with an internet connection with unlimited users per account for one price.
- + Faster Project Cycles**  
Finish programming your controllers and pass the virtual site over to the graphics developer while you start up another site and continue programming.
- + Increased Collaboration**  
All virtual sites are accessible to all team members at the same time. Finish a job that another engineer started, or work with your entire team to complete a large project.

**Control all aspects of a room and integrate with systems seamlessly.**



# Red5 EXPAND 04



## Expanding Red5 Throughout Your Facility

The Red5-EXPAND-04 power injector extends the reach of the Red5 system by increasing the number of Red5 modules that can be controlled by a single Red5-PLUS-ROOM controller. These power injector expansions can be located up to 70m (230ft) away from the controller.

### Key Features

- +** **Future-proof Retrofits**  
Integrate with technologies outside of traditional building control systems.
- +** **Expandable Universal I/O IoT**  
IoT Controller with Node-Red Support.
- +** **Supports BLE and NFC**  
Technologies Dual USB2 Ports.



**Expand your Red5 Controller's I/O Capacity wherever needed.**

# O<sub>3</sub> HUB



## Think. Sense. Speak.

With a top-down view from the center of the room, the O3 Sensor Hub detects motion, sound, light, and temperature with new levels of accuracy. With a complete sensor package, O3 provides your BAS with the data it needs to make economical and occupant-friendly decisions.

The O3 HUB is available as a companion device to our O3 Room Controller.

Use sensor fusion to detect motion, sound, light, temperature, and occupancy with new levels of accuracy.



### Key Features

Communicate with occupants via RGB light ring and integrated speaker.

Save time with easy-to-install mounting plate.



Detect occupancy using sound and motion.

## SENSOR FUSION

Measure surface temperatures precisely with IR sensors.



Offer control of temperature, humidity, light, and motion in a single package  
Control other devices using the on-board IR blaster



# O<sub>3</sub> Sense

## Think. Sense. Speak.

Delta Controls' award-winning O3 Sense standalone multisensor uses industry leading sensor fusion technology to deliver the most accurate view of an interior space available on the market. Integrating temperature, humidity, motion, sound, and light sensing in a single device, the O3 Sense uses machine learning to provide fast, accurate feedback on the monitored space.



### Key Features

- + Advanced sensing through Sensor Fusion.
- + Occupant feedback via RGB light ring and integrated speaker.
- + Quick workflow using the Proviso provisioning app.

Standalone  
Multisensor,  
Configurable.



# O<sub>3</sub> Edge

## Think. Sense. Speak.

Delta Controls' award-winning O3 Edge standalone multisensor uses industry leading sensor fusion technology to deliver the most accurate view of an interior space available on the market. Integrating temperature, humidity, motion, sound, and light sensing in a single device, the O3 Sense uses machine learning to provide fast, accurate feedback on the monitored space.



### Key Features

- + Measure occupant located/situated temperature precisely with combined.

---

- + IR and traditional sensors.

---

- + Accurate occupancy detection using sound and motion.

---

- + Communicate with occupants via RGB light ring, integrated speaker or the Seymour Connect app.

---

- + Integrate via the IR blaster, optional on board I/O or EnOcean connectivity.



**Standalone Controller, Multisensor, 2 Uninputs, Programmable.**

# Proviso



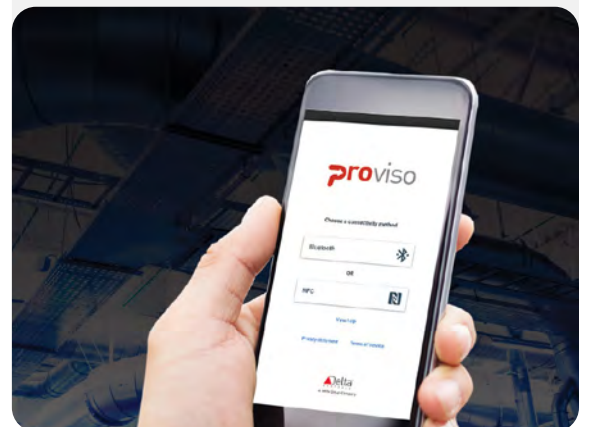
## Connect & Configure

The Proviso App is a mobile application for iOS and Android which allows users to directly connect to Delta Controls devices and configure them through BLE or NFC.

### Key Features

- + Provision Delta Controls devices without the need for a network connection.
- + Calibrate & monitor sensor data.
- + Review and adjust network configuration, device names, & time settings.
- + Upgrade Delta Controls device firmware.
- + Load Delta Controls device databases.

**Provision, calibrate, monitor, upgrade, and configure Delta Controls devices.**



# eZV enteliZONE VAV Controller

## Flexible VAV - Algorithm, Programmable or Hybrid

The eZV-440 covers a wide range of VAV configurations including multi-stage reheat with analog, binary or floating control, and series or parallel fan boxes. The eZV-440 includes built-in algorithms that are easy to configure for typical VAV/VVT applications.

The eZVP-440 is a fully programmable model that allows you to either create your own completely custom zone programs or modify the built-in algorithm's behavior.

### Key Features

- Flexibility**  
With multiple actuator options and universal I/O configurations, the eZV can handle any configuration of VAV.
- Customizable**  
Programmable option allows modifying algorithms or creating completely custom zone control.

Take advantage of pre-built algorithms to make diverse applications possible.



# eZNS



## enteliZONE Programmable Network Sensor.

With fully customizable faceplates and button layout, the eZNS provides you with the flexibility to manage the unique requirements of your building. Notify your users of alerts with configurable colors and customize the interface layout to streamline your occupant experience.



### Key Features

**+** **Multisensor**  
Reduce wiring with temperature, humidity occupancy and CO2 available in a single package. External input for additional door/window contact or temperature sensor connection.

**+** **Highly Flexible**  
Customize color, button interface, programmable operation to meet your needs.

\* Optional onboard Motion, CO2, Humidit.

**Streamline user experience with configurable colors and customizable interfaces.**



# eZNT

## Fully Programmable Customizable Thermostat

The eZNT reaches beyond the expectations of standard, network thermostat while remaining focused on cost-effectiveness. Fully programmable and with customizable button overlays, RGB backlighting, and NFC set-up, the eZNT provides the dependable, onboard control you expect from a Delta Controls thermostat. The eZNT provides options for analog outputs or FET relay outputs.



### Key Features

- +** **Fully Programmable**  
Customize sequences through GCL+ programming.
- +** **Flexible**  
On board I/O to handle a wide variety of unitary applications.
- +** **Local trending and alarms**  
Simple setup for troubleshooting and monitoring equipment.

Use a wide array of applications to suit your specific requirements.



# eZNT-Wi

## Wi-Fi BACnet. Thermostat.

The eZNT-Wi is a fully programmable, Dual band Wi-Fi enabled BACnet thermostat that combines built-in room sensing with application-level control in a single, wall-mounted device. Designed for retrofit and light commercial applications, eZNT-Wi upgrades legacy, non-communicating thermostats into connected, intelligent zone controllers without requiring new network infrastructure.

With native BACnet/IP over Wi-Fi, customizable user interfaces, and support for advanced control strategies, eZNT-Wi delivers improved comfort, energy performance, and operational visibility in a compact, installer-friendly form factor.



### Key Features

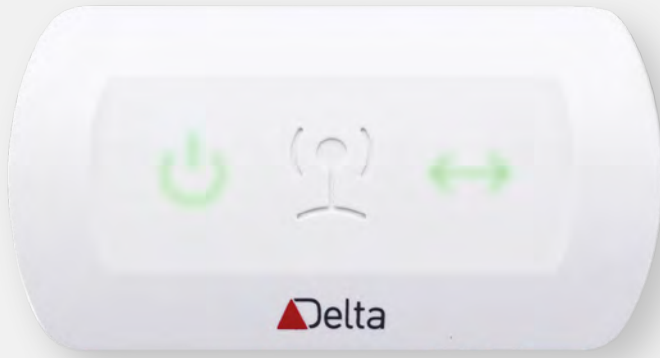
- + **Supports Dual Ban 2.4 / 5GHz**  
 Native BACnet/IP communication over Wi-Fi enables fast deployment without new cabling, making eZNT-Wi ideal for retrofit applications. Dual band 2.4/5GHz provides a 5GHz option for less interference and better performance in dense Wi-Fi environments.
- + **Fully Programmable Control**  
 Fully programmable and available in multiple I/O configurations (T100, T331, T304), the eZNT-Wi features universal inputs, analog outputs, and binary outputs to support a wide range of applications including VAV, fan coil, unit ventilator, chilled beam, and radiant systems.
- + **Customizable User Interface**  
 Large, easy-to-read LCD with RGB backlighting and configurable button layouts allows the thermostat to match occupant needs, décor, and branding.



**Wi-Fi enabled zone control for retrofit and light commercial applications.**

**Upgrade legacy thermostats. Improve comfort, efficiency and connectivity.**

# CON-ENOC



## EnOcean Gateway

Creates a dependable gateway for EnOcean wireless devices while saving money and adding functionality.

Add up to 32 EnOcean devices to your system with the CON-ENOC gateway. Directly connected to a Delta Controls controller's RS-485 port, the CON-ENOC is easy to install, fast to configure and saves you money on retrofit and refurbishment projects.

### Key Features

- +** **Customizable User Interface**  
Each CON-ENOC supports up to 32 devices.

---

- +** **Fast Integration**  
Each CON-ENOC supports up to 32 devices.

---

- +** **Quick Installation**  
Use screw mounts or the secure adhesive mounting pads to make adding a CON-ENOC to your system quick and easy.



**Don't let the cost of wires derail your retrofit project.**

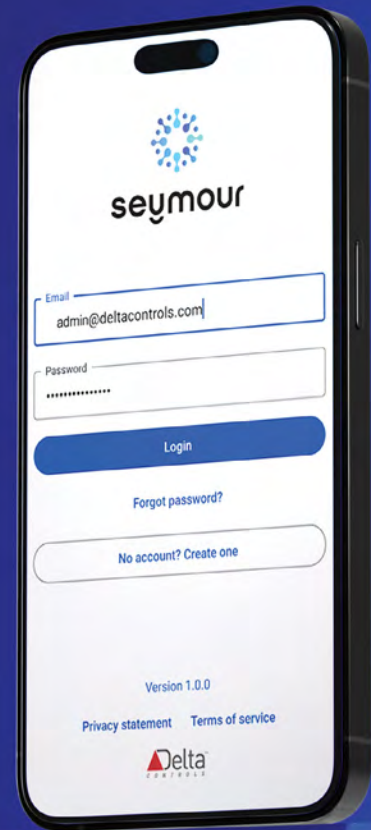
# Seymour Connect

## See More. Do More.

The Seymour Connect mobile app is the standard touchless occupant interface. It provides a simple way for occupants to monitor and control their environments and interact with Delta Controls' devices.

As an occupant using the Seymour Connect mobile app, you'll be able to monitor several room parameters based on the configuration and the available systems and sensors in the space. These could include temperature, humidity, light level, occupancy, and more!

As a building owner or facility manager, Seymour Connect is easy to configure and setup using the cloud-based Seymour Connect Portal. Seymour Connect mobile app available soon!



## Take Control of your Comfort.



### Key Features

- +
  - +
  - +
  - +
- Enable occupants to monitor and control indoor environments from mobile phones.
  - Manage & scale buildings, devices, and users from cloud-based Portal.
  - Build custom mobile app configurations to meet application-specific requirements.
  - Connect to spaces quickly and conveniently using QR Code Access.

# CON-BT-USB

## Wireless Service Tool for Faster Commissioning

The CON-BT-USB is Delta Controls' next-generation wireless service tool designed to simplify commissioning, programming, troubleshooting, and service updates across Delta BAS devices. Replacing the legacy CON-768BT, it enables technicians to wirelessly connect an enteliWEB Tech laptop to Delta controllers through Bluetooth, creating a virtual COM port for fast, flexible field servicing. Built for both legacy systems and modern devices like eZNS and eZNT, CON-BT-USB delivers a portable, reliable connection tool for every service technician.



### Key Features

- + **Bluetooth Virtual COM Port Connectivity**  
 Creates a one-to-one Bluetooth connection between a PC and the CON-BT-USB, allowing seamless communication with enteliWEB for commissioning and service without hardwired laptop connections.

---

- + **Flexible Legacy + Modern Device Support**  
 Supports RJ11 (BACnet MS/TP) and USB-A (eZNS/eZNT) communication interfaces, making it ideal for both legacy controllers like DVC, DAC, DSC, and DNS-24L, as well as newer Delta room devices.

---

- + **Portable Power Options**  
 Powered by either 24VAC/VDC through RJ11 or 5VDC through USB-C, giving technicians flexible field-use options whether working at a panel or directly at the device.

---

- + **Clear Diagnostics & Status Visibility**  
 LED indicators for Bluetooth activity, transmit/receive communication, USB-A, USB-C, status, and network errors provide instant visual feedback for faster troubleshooting and commissioning confidence.

**Wireless commissioning made simple. Fast, flexible Bluetooth access to every Delta controller.**

# Controller Selection Guide

## The Right Choice for Every Space

Every facility is a complex puzzle. Whether you are retrofitting a legacy high-rise or breaking ground on a state-of-the-art laboratory, the hardware you choose defines the performance, security, and longevity of your building. At Delta Controls, we don't just manufacture devices; we provide the foundation for a secure, integrated, and future-proof ecosystem.

**Our philosophy is simple: Do it right.** This means offering a portfolio that balances raw processing power with the flexibility to handle any application, from large-scale primary systems to precise room-level integration.

### Key Products

- +** **The Red5 Series:** Our next generation of native BACnet controllers. From the high-performance **Red5-PLUS** for large I/O tasks to the **Red5-FIELD** designed for seamless retrofits, the Red5 platform offers faster processing, increased memory, and advanced IoT features.
- +** **The O3 Series:** Redefining the "sense" of a room. Using industry-leading **sensor fusion**, the O3 series detects motion, sound, and light with unparalleled accuracy to make occupant-friendly decisions.
- +** **Application-Specific Control:** Specialized solutions like our **PoE VAV controllers** leverage your existing IT infrastructure to reduce wiring costs while delivering more data for powerful analytics.

# Controller Selection Guide

**Legend**

**Supported BACnet Network Types**

- MS/TP (RS-485)
- High Speed 10/100Mb/s
- BACnet Secure Connect Node
- BACnet Secure Connect Hub\* or Node \* Hub support max 100 Nodes

**Supported I/O Expansion Types & Limits**

- Red5BUS Expanders\*\*
- enteliBUS Backplanes
- Red5BUS I/O Modules
- enteliBUS I/O Modules
- LINKnet I/O Modules

\* n = Max Devices  
\*\* Expander addr range is 2-9 (controller occupies addr 1)

## Expansion & Power Devices

**O3-HUB**  
Addressable Multisensor Ceiling Mounted

- Included sensor features: Temperature, humidity, motion, light, mic/audio levels, sound indicators, LED indicator
- I/O options: 2 UI/VO or EnOcean interface

**eBM-XXX**  
I/O Expansion Modules

- Mounted on eBX Backplanes
- Wide variety of I/O types available:
  - eBM-D404-(H\*) = 4 UI, 4 BO
  - eBM-440-(M\*\*) = 4 UI, 4 UO
  - eBM-800
  - Many more types

\*H = HOA \*\*M = HOA with variable adj.

**eZNS-T100**  
LINKnet Sensor

- 2 line display (1 very large, 1 small)
- Many function icons
- Available sensors:
  - Temperature, Humidity
  - CO2, Motion

**Red5-MODULE-1DOOR**  
Access Control Module

- Weigand credential
- Request-to-Exit
- 2 Door Lock/Accessory BOs
- 1 UI/VO

**Red5-MODULE-POE**  
Power Over Ethernet Ceiling Mounted

- Power for a single Red5 Controller
- Not Addressable
- Not for I/O Module support
- 12.95 Watts (with Type 1 PoE switch)
- 25.5 Watts (with Type 2 PoE switch)

**Red5-MODULE-DALI**  
Lighting Control Modul

- Supports:
  - 64 DALI devices
  - 16 Groups
  - 16 Scenes

**Red5-EXPAND-04**  
Addressable Power Injector

- Supports Red5 I/O Modules
- Connects to CANBus port (NET3)

**Red5-MODULE-4F4xP**  
I/O Expansion Module

- 4 FET BO
- 4 UI/VO

**Red5-MODULE-8PxP**  
I/O Expansion Module

- 8 UI/VO

**Red5-MODULE-SMI**  
Blind Control Module

- Supports
  - 1 SMI Channel
  - 16 Drives
  - 16 Groups of Drives

**eBX-04/08**  
Addressable Backplane Expander

- Supports 4 or 8 eBM-XX
- Expands eBUS to hundreds of I/O points

**DFM-400/404/440**  
LINKnet I/O Modules

- 4 UI, 0 UO/BO (400)
- 4 UI, 0 UO, 4 BO (404)
- 4 UI, 4 UO (440)

**I/O Expansion Modules**

- Red5-PLUS (Max 12)
- Red5-EDGE (Max 4)

**Door Modules only used with:**

- Red5-PLUS-ROOM (Max 24)
- Red5-EDGE-ROOM (Max 4)

## Network Accessories

**CON-T1L**  
10Base-TL1 Media Converter

- Power: 24V AC/DC, or Red5BUS
- 1 X 10/100 Mbps RJ45 connector
- 2 X 10Mbps Twisted Pair T1L ports

**DZNR-768**  
BACnet MS/TP Repeater

- 4 X RS-485 MS/TP ports
- 1 MS/TP NW into 4 segments:
  - 64 nodes/segment (max 99 total)
  - 4000 ft (~1200 M) per segment
- Autoconfiguring

**TRM-768**  
MS/TP Network Terminator

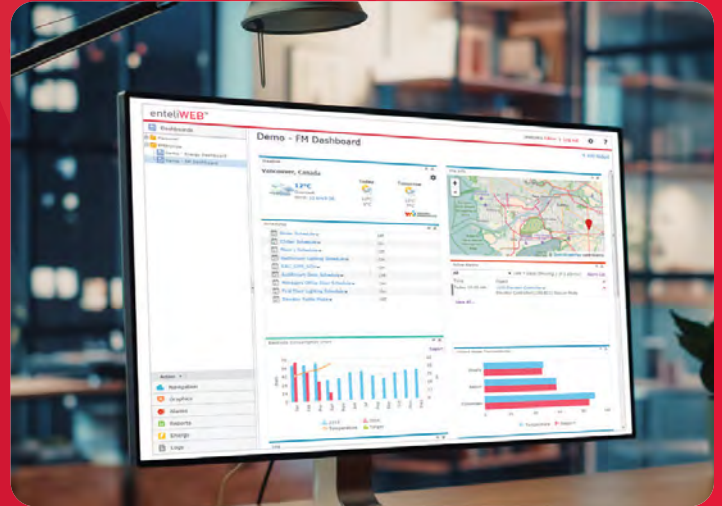
- End of Lin (EOL) Terminator

Memory + Resources							
<p><b>Primary System (Large)</b></p> <ul style="list-style-type: none"> <li>Constant or Variable Volume AHU Serving Multizone</li> <li>Boiler/Chiller</li> <li>Heating/Cooling Plant</li> <li>Cooling Tower/Heat Exchange</li> </ul>						<p><b>Red5-PLUS-1180/1146</b> System Controller</p> <p>Programmable, Expandable</p> <p>8 UO, 0 TRIAC BO (1180)</p> <p>4 UO, 6 TRIAC BO (1146)</p>	<p><b>eBMGR-2</b> + multiple eBM-4XX eBUS System Controller</p> <p>Programmable, Expandable</p> <p>Variable UI/VO/BO</p>
<p><b>Primary System (Medium)</b></p> <ul style="list-style-type: none"> <li>Constant or Variable Volume AHU</li> <li>RTU w/Integrated VVT Zones</li> <li>Boiler/Chiller</li> <li>Cooling Tower</li> </ul>					<p><b>Red5EDGE-1180/1146</b> Application Controller</p> <p>Programmable, Expandable</p> <p>8 UO, 0 TRIAC BO (1180)</p> <p>4 UO, 6 TRIAC BO (1146)</p>	<p><b>eBCON-2 +4 eBM-4XX</b> eBUS System Controller</p> <p>Programmable, Expandable</p> <p>16 UO / TRIAC BO</p>	
<p><b>Primary System (Small)</b></p> <ul style="list-style-type: none"> <li>Single Zone RTU or AHU</li> <li>Boiler/Chiller</li> </ul>				<p><b>Red5-EDGE-634/606</b> Application Controller</p> <p>Programmable, Expandable</p> <p>3 UO, 4 TRIAC BO (634)</p> <p>0 UO, 6 TRIAC BO (606)</p>	<p><b>eBCON-2 +2 eBM-4XX</b> eBUS System Controller</p> <p>Programmable, Expandable</p> <p>8 UO / TRIAC BO</p>		
<p><b>Small Zone System</b></p> <ul style="list-style-type: none"> <li>Fan Coil Unit</li> <li>Heat Pump</li> <li>Unit Ventilator</li> <li>Force Flow</li> <li>Unit Heater</li> <li>A/C Unit</li> </ul>	<p><b>eZFC(P)-424R4-24</b> eZONE Fan Coil or Heat Pump Controller</p> <p>Configurable/Programmable</p> <p>4UI, 2 AO, 4 TRIAC BO</p>	<p><b>eZNT-T100/T331/304</b> eZONE Stat Controller</p> <p>Programmable, available with Backlight, Temp, Humid, CO2</p> <p>1 AI (T100)</p> <p>3 UI, 3 UO, 1 BO (T331)</p> <p>3 UI, 0 UO, 3 BO (T304)</p>	<p><b>Red5-FIELD-634/606</b> Application Controller</p> <p>Programmable</p> <p>6 UI, 3 UO, 4 TRIAC BO (634)</p> <p>6 UI, 0 UO, 6 TRIAC BO (606)</p> <p>11 UI, 8 UO, 0 TRIAC BO (1180)</p> <p>11 UI, 4 UO, 6 TRIAC BO (1146)</p>	<p><b>Red5-EDGE-634/606</b> Applications Controller</p> <p>Programmable</p> <p>3 UI, 4 TRIAC BO (634)</p> <p>0 UO, 6 TRIAC BO (606)</p>			
<p><b>Air Volume System</b></p> <ul style="list-style-type: none"> <li>Variable Air Volume Box (VAV)</li> <li>Variable Volume &amp; Temperature Terminal (VVT)</li> </ul>	<p><b>eZVP-440</b> eZONE VAV Controller</p> <p>Configurable &amp; Programmable</p> <p>4UI, 4UO</p> <p>Red5 Field V100/V400</p>	<p><b>eZVP-440E</b> eZONE VAV Controller</p> <p>Programmable</p> <p>4UI, 4UO</p> <p>Belimno or Siemens Act.</p>	<p><b>Red5-EDGE-V100/V440</b> VAV Application Controller</p> <p>Programmable</p> <p>1 AI, 0 AO, 0 BO (V100)</p> <p>4 UI, 4 UO (V440)</p>				
<p><b>Room Integration</b></p> <ul style="list-style-type: none"> <li>HVAC Zone Control</li> <li>Card Access</li> <li>Lighting</li> <li>Blinds</li> </ul>		<p><b>O3-SENSE</b> MultiSensor Ceiling Mounted</p> <p>Support for MQTT/BLE/NFC</p> <p>Sensor options similar to O3-HUB</p> <p>(See Legend. NOTE: No I/O options for this model).</p>	<p><b>Red5-EDGE-ROOM</b> Application Controller</p> <p>Programmable, Expandable</p> <p>Single Room Integration</p> <p>Variable UI/VO/BO</p> <p>* O3-HUBs only</p>	<p><b>O3-EDGE</b> MultiSensor Controller Ceiling Mounted</p> <p>Programmable</p> <p>Support for MQTT/BLE/NFC</p> <p>2 UI/VO</p> <p>Sensor options similar to O3-HUB</p> <p>(See Legend)</p>	<p><b>Red5-PLUS-ROOM</b> Application Controller</p> <p>Programmable, Expandable</p> <p>Single/Multi Room Integration</p> <p>Variable UI/VO/B</p>		

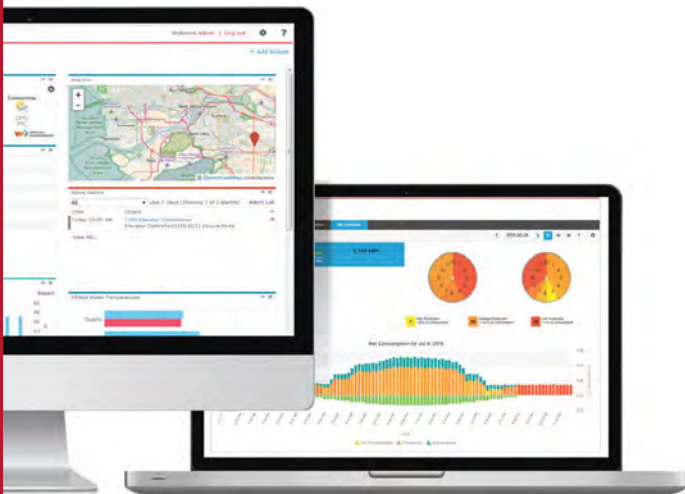
# enteliWEB

## Facility & Energy Management Software

Manage your facilities from anywhere. Use enteliWEB to centralize your building management operation and collect real-time data about energy use in your facilities. Take action with easy-to-use facility management tools and customizable dashboards for all users. With enteliWEB, the power of your smart building is at your fingertips.



View your building your way and control multiple systems through one interface.



### Key Features

- Engineering Tools**  
All the tools you need to administrate your building network, with personalized dashboards for every person.
- Centralized Energy Management**  
Take control of your stand-alone building or multi-site network using a consistent, powerful system. With power integration capabilities, alarms, and audit logs, you're never in the dark.
- Energy Analytics**  
Make smart energy management decisions through the intuitive user interface including customizable menus and widgets.

# enteliCLOUD

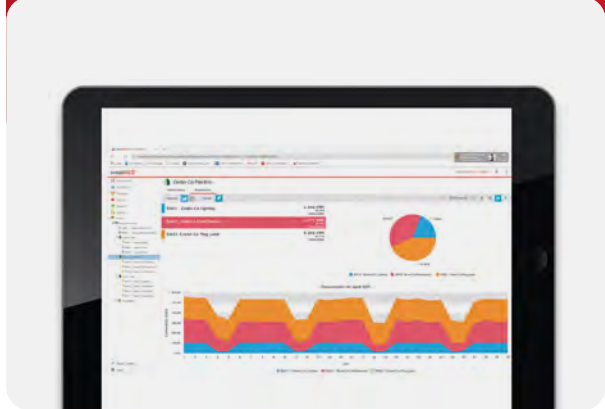
## Building Management System Software as a Service (SaaS)

enteliCLOUD is a cloud Software as a Service (SaaS) that securely acquires, transfers, and stores your building automation system data to improve organization, management and savings.

Monitor, operate, and control your portfolio buildings across geographies with your computer or smart device maximizing operational excellence, increasing your property value, and saving energy. And, by delivering a consistently exceptional environment, you boost staff productivity and the value of your portfolio.



enteliCLOUD offers the same features as an on-premise solution at a lower overhead cost with easier deployment & upgrades.



### Key Features

- + Remote Access Control**  
Monitor and control buildings from home, the office or on the go without requiring onsite staff.
- + Renewable Energy Management**  
Manage renewable energy sources in conjunction with energy consumption.
- + Optimize Business Tactics**  
Make better business decisions based on up to date building performance data.
- + Reduce Costs**  
Reduce costly emergency technician visits by pre-diagnosing problems and fixing them remotely.

# enteliVAULT

## Centralized or Distributed Data Archiving

enteliVAULT® is a centralized and distributed data archiving solution that supports both on-site and remote architectures. Available as a license add-on for enteliCLOUD® and enteliWEB®, enteliVAULT is powerful, secure, and easy to deploy, with no additional hardware, software installation, or firewall management required.



### Key Features

- + **Allows large amounts of data to be stored in a central location** that is easy to manage.
- + **Integration with enteliWEB and enteliCLOUD.** Easy to set up and use, with no hardware or software to install, or firewalls to manage.
- + **Energy Management Integration.** Shows energy reports and archived meter data when the Energy Management add-on is enabled in enteliWEB.

Data collection to inform smart decisions.



# enteliSKETCH



## Next-Generation Graphics for Building Automation.

enteliSKETCH is Delta Controls' next-generation graphics editor and viewer for enteliWEB, enteliCLOUD, and Building Canvas. Designed to streamline BAS visualization, enteliSKETCH modernizes the way graphics are created, managed, and deployed to deliver faster project execution, improved consistency, and powerful data interaction across building systems.

enteliSKETCH provides a modern design environment while maintaining backward compatibility with existing projects. Whether you're designing a single system or an enterprise-wide deployment, enteliSKETCH reduces engineering time while improving accuracy and consistency.

### Key Features

- + **Graphics Generator**  
 Automatically generate equipment graphics, navigation trees, and summaries using spreadsheet-based inputs to reduce manual configuration time.

---

- + **Advanced Data Management**  
 Includes global data link lists, device and object filtering, and find-and-replace tools to quickly validate and update graphics across entire projects.

---

- + **Backward Compatibility**  
 Modular solution provides flexible and scalable system Open, view, and edit existing enteliVIZ graphics directly in enteliSKETCH.

**Modern graphics. Faster deployment. Built for the future of BAS**



# Cloud Engineering

## Create Networks of Virtual Controllers in The Cloud.

Sending an engineer to a site is expensive. Most engineers finish, test, and troubleshoot their programming and graphics links onsite. Why? Because it's the only place where the entire network is available. Host multiple controllers at once, then finish and test all programming and graphics before going on site.

Save the driving time, mileage, and other costs, for one site visit, for one engineer, each month. Plus, no "wall of controllers." No wall means no need to purchase expensive controllers, no electricity costs, less time spent rewiring controllers and your office stays neat and tidy.



### Key Features

- + Availability**  
Program or work on graphics from anywhere with an internet connection with unlimited users per account for one price.

---

- + Faster Project Cycles**  
Finish programming your controllers and pass the virtual site over to the graphics developer while you start up another site and continue programming.

---

- + Increased Collaboration**  
All virtual sites are accessible to all team members at the same time. Finish a job that another engineer started, or work with your entire team to complete a large project.

**Spend less time on site, reduce costs and become more efficient.**



# Commissioning Module

## enteliWEB Multi-session Commissioning add on Module.

Commissioning Module provides a streamlined recording and reporting interface for control system commissioning. Employment of commissioning sessions allow users to divide the commissioning work into distinctive groups, and use the tool both for initial construction and ongoing continuous commissioning programs.

A simple dialogue assists the user in guiding through the process to check the DDC values versus manually observed calibration values, check off graphic & tag statuses, add notes for future users to learn context, and set aside any issues to remain on the electronic punch-list.



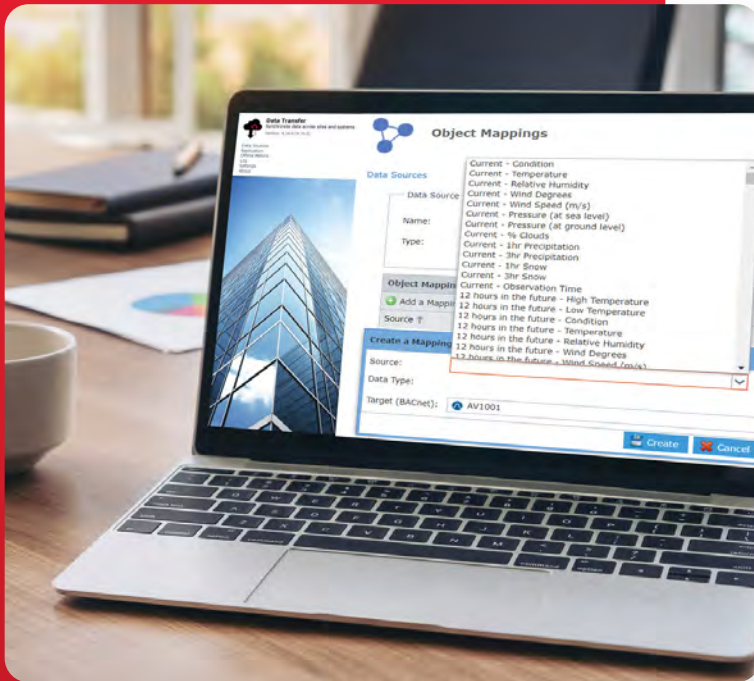
### Key Features

- + Multi-sessions allow running of continuous commissioning programs across multiple sites.
- + Maintains historical logs of DDC vs observed values for each point in the system.
- + Custom attributes may be added to each point to track additional information.
- + Detailed completion and in-progress reports may be generated.

Drive commissioning workflow and reporting using purpose-built software.



# Data Transfer Module



**Integrates predictive and live real-time weather station data for any location in the world.**

Data Transfer Module (DTM) is a licensed enteliWEB Add-On that connects real-time data values between internal and external sources, such as online weather service data updating directly with BACnet controllers. Additionally the DTM may be used to transfer data points between enteliWEB sites that are on separate networks, or it can be used to push or pull data with FTP servers.

## Key Features

- + Optimize start times, setpoints, and setback routines based on current and future predicted environmental data.
- + Most regions also provide local outdoor temperatures, humidity, sunlight and cloud cover %, wind speed and direction, precipitation as well as predictive hourly incremental values (up to 10 days).
- + Add an online data source such as local utility or a new weather service via PDS hire.
- + Hands-off operation post-configuration: continuous data feed into BACnet controllers and trend logs.

**Integration engine for weather stations, utilities, energy metering, and other common data transfers.**



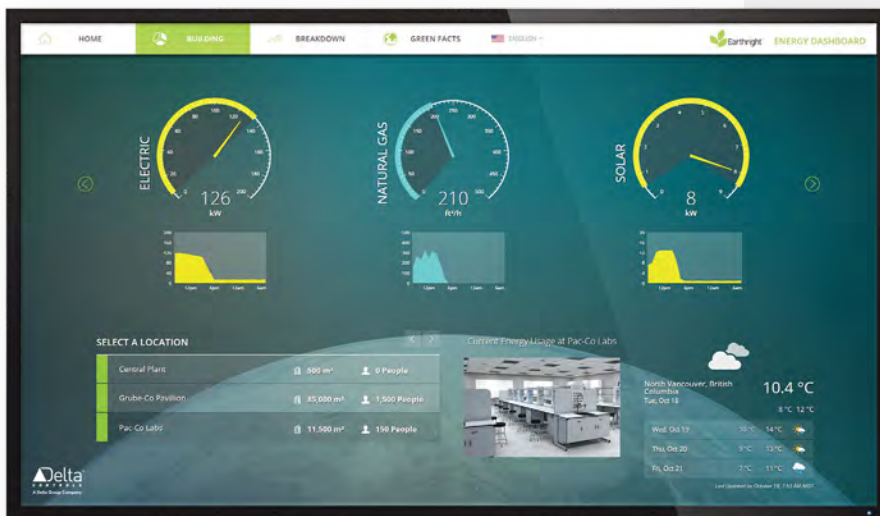
# Earthright Dashboard

## Educate. Evaluate. Earthright.

Be proud of your building's efficiency. Use the Earthright Energy Dashboard to communicate your real-time and year-to-year energy conservation results with your occupants. Get people involved with your energy conservation efforts using an interactive dashboard in your building's lobby or other public areas. Promote conservation, gain LEED points, and make your impact known.

### Key Features

- + Single Installation.
- + Multiple Viewing Platforms.
- + Interactive kiosks.
- + Lobby displays.
- + Web browsers.
- + Custom Setup.



Show off your building's green initiatives while actively conserving energy.



# Facility Scheduler

## Schedule Spaces. Control Costs.

Integrate your smart building systems into a central, easy-to-use platform. Facility Scheduler integrates third-party scheduling, booking systems and tenant portals with enteliWEB. Worried about the process changes that accompany a new system? Facility Scheduler lets you preserve your existing workflow while gaining all the benefits of a fully-integrated Delta Building.



### Key Features

- + Tie Building Automation to Occupancy**  
The Facility Scheduler allows you to sync HVAC, access, and lighting to occupancy.
- + Create Savings in Your Building**  
Save money by leveraging on-demand control. Give your smart building more intelligence by telling it when spaces aren't occupied.
- + Support for Multiple Authentication Methods**  
Methods, including Biometric credentials.

Integrate multiple systems and improve your daily workflow effortlessly.



# N4 DeltaBench 2.0



## Smart Licensing, Simple Ordering.

N4-DeltaBench 2.0 is Delta Controls' next-gen Niagara module that brings true programming and commissioning capabilities for Delta controllers - directly into the Niagara 4 framework. It extends standard BACnet drivers to support Delta's proprietary objects, so you can engineer, commission, and service Delta's V4 controllers from within Niagara Workbench or web clients. Whether you're meeting spec or enabling remote access, DeltaBench delivers native-style control with no toggling between platforms required.



### Key Features

- + Unified Engineering Interface
- + Extended BACnet Object Control
- + Database & Device Services
- + Built for Niagara 4.15+

### Deploy Faster, Support Smarter.

- Service and program controllers through the same interface.
- Eliminate third-party tools or workflow switching.
- Improve serviceability and remote support.
- Easily meet Tridium programming spec requirements.

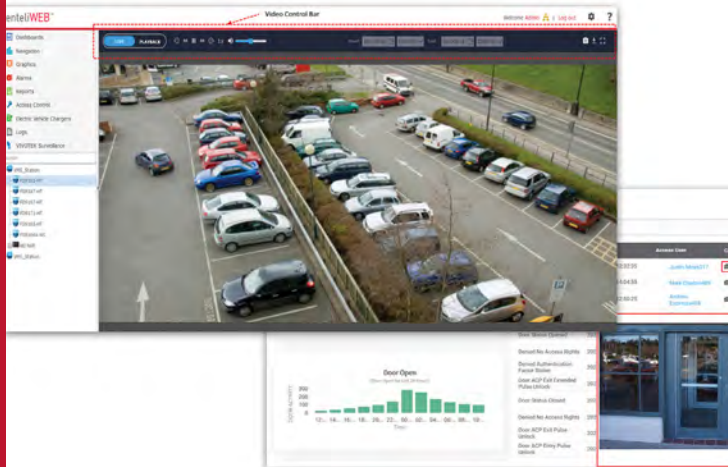
# Red5 Access System

## Compact. Modular.

When the Red5 Access Module is added to a Red5 system, Delta Controls' building automation system is extended by integrating seamlessly with Delta Controls HVAC, Lighting and Energy Management applications. This provides total control of your facility environment, from controlled access of areas, temperature, lighting and energy monitoring, everything is under control. Our access control system offers flexible and scalable solutions to fit any security need.



Keep an eye on your premises in real-time, enhancing situation awareness.



### Key Features

- + Native interoperability with building automation management tools and system hardware.
- + BACnet Secure Connect ensures secure and reliable communication between devices.
- + Modular solution provides flexible and scalable system architectures.
- + Video management system integration provides greater awareness for system operators.

# Red5 DALI Module

## DALI Integration

Adding to the versatility of our Red5 Room Controller, the Red5 DALI module allows your system to integrate with the DALI devices in your space. Increase your flexibility and decrease your system's complexity with full integration at all levels of your networked lighting control system. Expandable, dimming and Correlated Color Temperature.



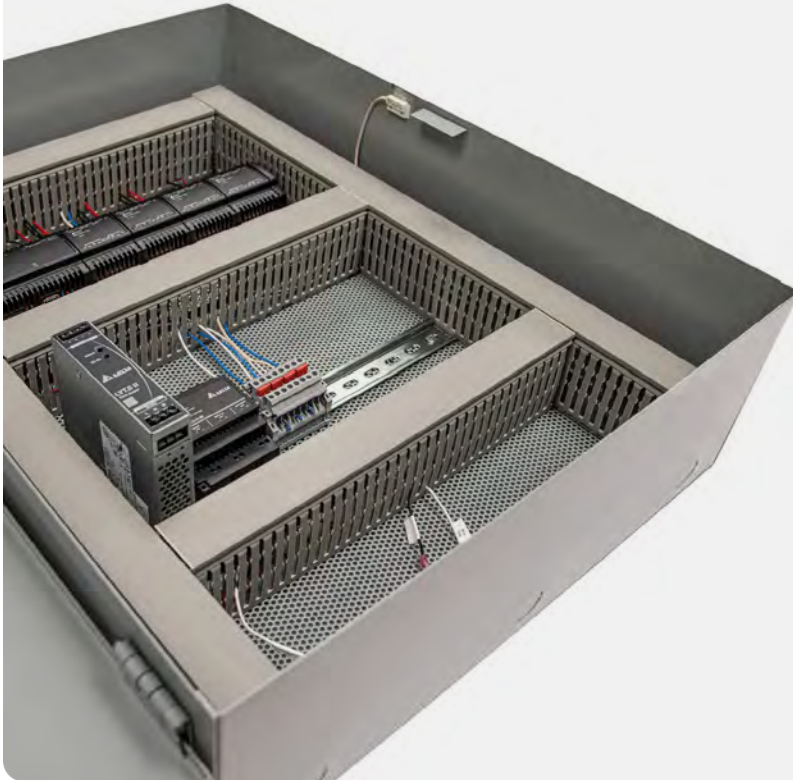
### Key Features

- + Seamless Integration**  
The Red5 DALI module provides seamless integration between your DALI devices and your BACNet system.
- + Versatile Lighting System**  
With access to DALI, you're provided with a versatile lighting system integrated directly into your BACnet system.
- + Delta Controls offers an array of DALI light switches and accessories.**

**Integrate with DALI devices and increase flexibility at all levels of your network.**



# Red5 Access Unit



**Simple. Scalable.  
Interoperable.**

The Red5 Access Unit transforms how access control is deployed. Factory assembled, pre-wired, and fully tested, it delivers a complete, professional grade solution right out of the box. Designed to integrate seamlessly into the Delta Controls Red5 ecosystem, it provides unified control of access, HVAC, and lighting within a secure BACnet environment.

## Key Features

- + Plug and Play Installation Efficiency.

---

- + Unified System Control.

---

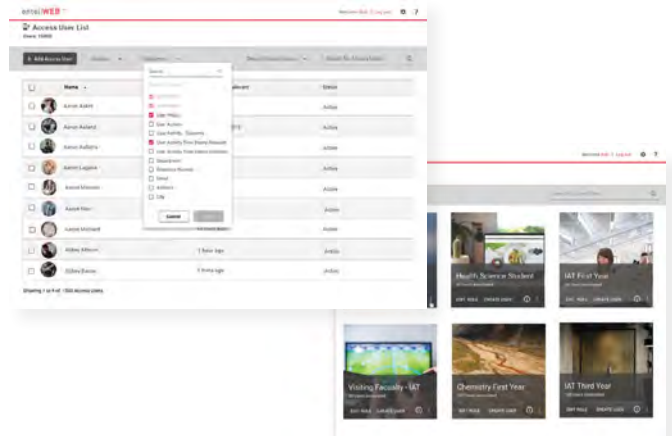
- + Power Reliability for Continuous Operation.

---

- + Secure and Certified.

---

- + Support for Multiple Authentication Methods, including Biometric credentials.



**Modular access control for seamless integration with HVAC and lighting. Build secure unified smart spaces.**

# Red5 EDGE-LIGHT-RELAY



## Delta Controls' Next Generation Centralized Lighting Platform.

The Red5-EDGE-LIGHT-RELAY is a fully programmable, native BACnet lighting controller that forms the core of the Red5 lighting ecosystem. Designed to power and control PR-12 relay modules, Red5 I/O modules, gateway modules, and O3-HUB devices, it delivers a modern, scalable, and BAS-integrated approach to lighting control. With modular connectivity, dual Ethernet ports, and advanced diagnostic capabilities, the Red5-EDGE-LIGHT-RELAY provides the foundation for flexible lighting architectures in both retrofit and new construction environments.

### Key Features

- + Fully Programmable BAS Lighting Controller Reuse Legacy Twisted Pair wiring to achieve Ethernet-level speed and reliability—no rip-and-replace required.
- + High-Performance Networking & Communication Delivers BACnet/IP, BACnet/SC, BACnet MS/TP, and LINKnet support with dual Ethernet ports for network flexibility and secure system integration.
- + Modular, Scalable Lighting Architecture Supports up to 4 local modules and 12 remote modules—or up to 8 O3-HUB devices—for easy expansion and adaptable lighting system design.
- + Built-In Diagnostics & Network Visibility Provides advanced fault detection, onboard LED indicators, and remote firmware/database management to simplify commissioning and ongoing maintenance.

**A powerful, programmable BACnet lighting controller that delivers flexible, scalable, and fully integrated smart lighting control across your facility.**



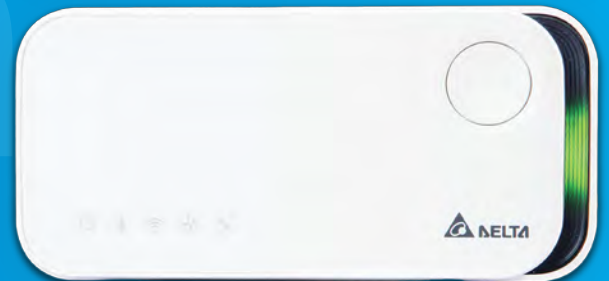
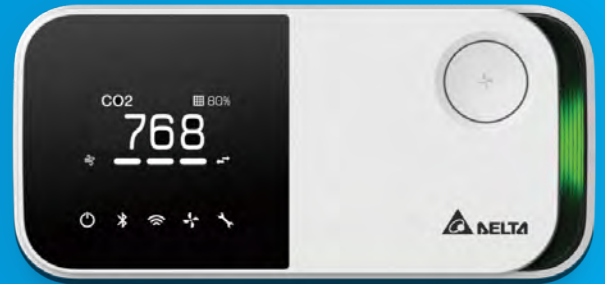
# UNO IAQ Monitors

## Connected. Smart. Healthy.

UNO Indoor Air Quality (IAQ) Monitors provide real-time information on harmful indoor air factors. The detection range, depending on the model, includes Carbon Monoxide (CO), Carbon Dioxide (CO2), Total Volatile Organic Compounds (TVOC), Fine Suspended Particulate Matter (PM2.5), Suspended Particulate Matter (PM10), Formaldehyde (HCHO), and Ozone (O3).

According to researchers, during 90% of the time we spend indoors, the unhealthy air factors such as volatile organic compounds, suspended particulates, mold, enter our trachea and lungs invisibly, increasing our risk of respiratory diseases and reducing our immunity.

Application fields cover office, education, public places, healthcare, and residential buildings.



Protect your health and wellness.  
Start with indoor air quality.



### Key Features

- + Real-time monitoring of Indoor Air Quality.
- + RESET certified.
- + Tested for compliance with Delta Controls system.
- + Models with BACnet, WiFi, Modbus communication.
- + Units with LED indication of IAQ status, with and without display.

# enteliVIEW

## enteliWEB at Your Fingertips

enteliVIEW-10 is a modern 10.1" touch screen that can present interactive multimedia content. It is a web panel that acts like a web browser that smoothly displays enteliWEB with enteliVIZ graphics. This reliable capacitive touch screen enables easy visualization and control of the building automation system in offices, conference rooms, lobbies, or technical rooms. Integrated LED panels on the sides of the housing allow status indication in red or green. Built-in buzzer enables sound alarms.

### Key Features

- + CNC aluminum housing.
- + Browser operation in full screen mode. Full screen mode browser and define a start page.
- + LED panels in housing, build-in buzzer.
- + Possibility of power supply via PoE or 12VDC (with recommended DRC-12V60W1AZ).



Smoothly display enteliWEB on a 10" touch screen with LED panels for status indication and built-in buzzer for sound alarms.



# enteliPREM

## enteliWEB in a Box

enteliPREM500 is an on-premises compact solution for small sites that consists of enteliWEB installed with eW500 license for up to 500 I/O points and eW500-EV enteliVIZ add-on software included on an industrial PC with Windows 10 IoT Enterprise.

This solution aims to drastically reduce the setup time, knowledge required, and installation costs for small-to-medium-sized projects.

If archiving is required, enteliPREM500+ with additional enteliVAULT add-on software is also available for purchase. This is a true plug & play product!



### Key Features

- + Workflow improvements with pre-installed and licensed enteliWEB to decrease project engineering time and cost.
- + Mounting flexibility with a compact form factor + included DIN rail kit, IP50, UL Listed.
- + Pre-qualified Delta Controls software compatibility stack tuned to system specifications defined in enteliWEB deployment guide.
- + Compatible and tested to work with enteliVIEW, our touch panel with web client.



**Deploy enteliWEB rapidly on-premise in small sites for up to 500 I/O points.**

# VIVOTEK Network Cameras



## High Quality, Supreme Night Visibility.

VIVOTEK's outstanding network cameras feature a range of megapixel resolutions, camera dimensions, advanced technologies and value-added video analytic functions in order to satisfy the needs of a diverse range of applications.

The VIVOTEK security cameras also offer people counting integrated directly to an Red5 Room Controller.



### Key Features

- + State-of-the-art, scalable camera solutions.

---

- + Broad line of IP cameras.

---

- + License plate recognition.

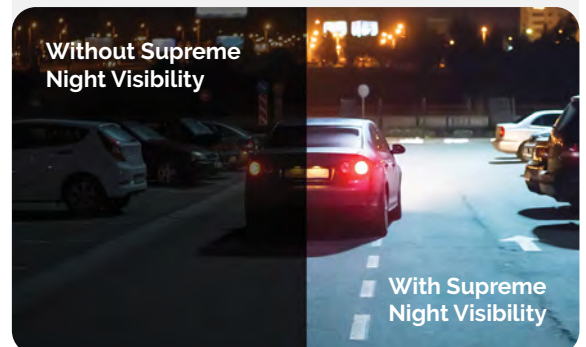
---

- + Facial recognition.

---

- + TAA-Compliant products.

### The ideal solution for indoor surveillance needs.



# JACE<sup>®</sup> 9000

## Integration. Analysis. Control & Visualization.

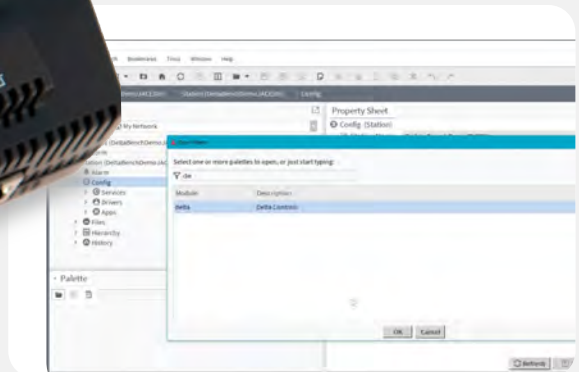
The JACE 9000 is a compact, embedded IoT (Internet of Things) controller and server platform for connecting multiple and diverse devices and sub-systems. With Internet connectivity and Webserving capabilities, the JACE 9000 controller provides integrated control, supervision, data logging, alarming, scheduling and network management.



### Key Features

- +** **Integration**  
Wide range of supported protocols, both modern and legacy. Used as a gateway appliance, the JACE-9000 can bring older legacy devices into a modern BACnet or Niagara system enabling phased upgrades of legacy systems. With embedded web server UI, supervisory control, scheduling, alarming and trending the JACE-9000 can act as a complete small system embedded front end.
- +** **Scalable**  
Easily add additional JACE's and/or a Niagara Supervisor as system size grows.

Seamlessly integrate IoT and legacy protocols into a single, modern Niagara or BACnet building automation system.



# EQUIP Portfolio

## Delta Intelligent Building Technologies Vendor Partnership

Delta is pleased to announce that we've expanded our list of field devices available through our ordering system. Make sure to check out the expanded offering of products available on online orders.



# Delta Intelligent Building Technologies Certifications

# Certifications



## 21 CFR Part 11

enteliWEB integrates features that include electronic signatures, user and group-based permissions, secure user authentication with LDAP intuitive, detailed user log reporting, and scheduled system backups. All these features come together to provide compliance with 21 CFR Part 11. enteliWEB's intuitive workflows make it the ideal building management tool for pharmaceutical manufacturers, biotech companies and medical equipment manufacturers. We make it simple to comply with the regulations that help make critical product manufacture consistent and safe.



**UL 864**

Delta Controls offers a wide selection of products with UL 864 certification. No two systems are alike and we believe that you should be able to economically engineer any system using the right products. When it comes to fire, smoke and safety no corners can be cut. Because of this, all products with the UL 864 certification are designed from the ground up to meet or exceed the certification standards. Our enteliWEB Operator Work Station (OWS) is also UL 864 certified to ensure that you can maintain safety while conveniently managing the rest of your building without extra training for staff.



**Data & Cybersecurity**

Delta Controls has always focused our efforts on providing solutions that are innovative, responsive, and easy to implement, and our cybersecurity program is no different. Through industry standards such as OWASP, ISO, and NIST, Delta Controls has the policies, processes and testing in place to ensure we are delivering secure products. Delta Controls is one of the first manufacturers in the industry to implement BACnet Secure Connect to encrypt and authenticate critical data within the system. We are dedicated to ensuring that building networks remain protected through IT integration best practices, constant product appraisal and timely security updates.

40+

### Years of Expertise

Four decades of experience leading the market in building automation and control.

### Global. Approachable.

Delta Intelligent Building Technologies is a renowned industry leader in building automation control with a global presence spanning over 80 countries and a network of 300 service providers. For more than four decades, Delta Intelligent Building Technologies has been at the forefront providing reliable and user-friendly control solutions in commercial, healthcare, education, leisure markets, and beyond.

80+

### Global Markets

Strategic presence in over 80 countries, delivering solutions on a global scale.

### Say Hello to our Customer Services Team

Delta Intelligent Building Technologies Customer Services team is made up of world-class professionals specializing in sales support, orders fulfillment, shipping and aftercare support. Our team prides themselves on providing exceptional care and service, making our customers' lives easier and cost-friendly.

450+

### Partner Network

A wide network of service providers dedicated to excellence and customer support.

5+

### Core Industries

Expertly serving the commercial, healthcare, education, leisure, and industrial sectors.

## Our Vertical Market Solutions

Delta provides specialized, scalable building automation systems (BAS) for vertical markets including data centers, healthcare, education, multi-site commercial real estate (CRE), and government facilities. Our solutions focus on energy efficiency, IoT connectivity, and secure, open-protocol technologies (BACnet) to enhance occupant comfort, safety, and operational efficiency.

- Data Centers
- Healthcare
- Multi-Site Retail
- Government & Municipalities
- Education (K-12 & Higher Education)
- Warehouse & Distribution

Do it **right**.

# Do It Right in Mission-Critical Environments.

Delta Intelligent Building Technologies doesn't just automate systems we **empower facilities** with open, scalable, and secure solutions.

---

Visit **Online Orders**, the source for Delta Controls products and peripherals, redesigned to serve you better.

[deltacontrols.com](https://deltacontrols.com)